

United States Bankruptcy Court
District of New Mexico

May 2, 2022

CM/ECF Real Time Statistics

April 2022 Report

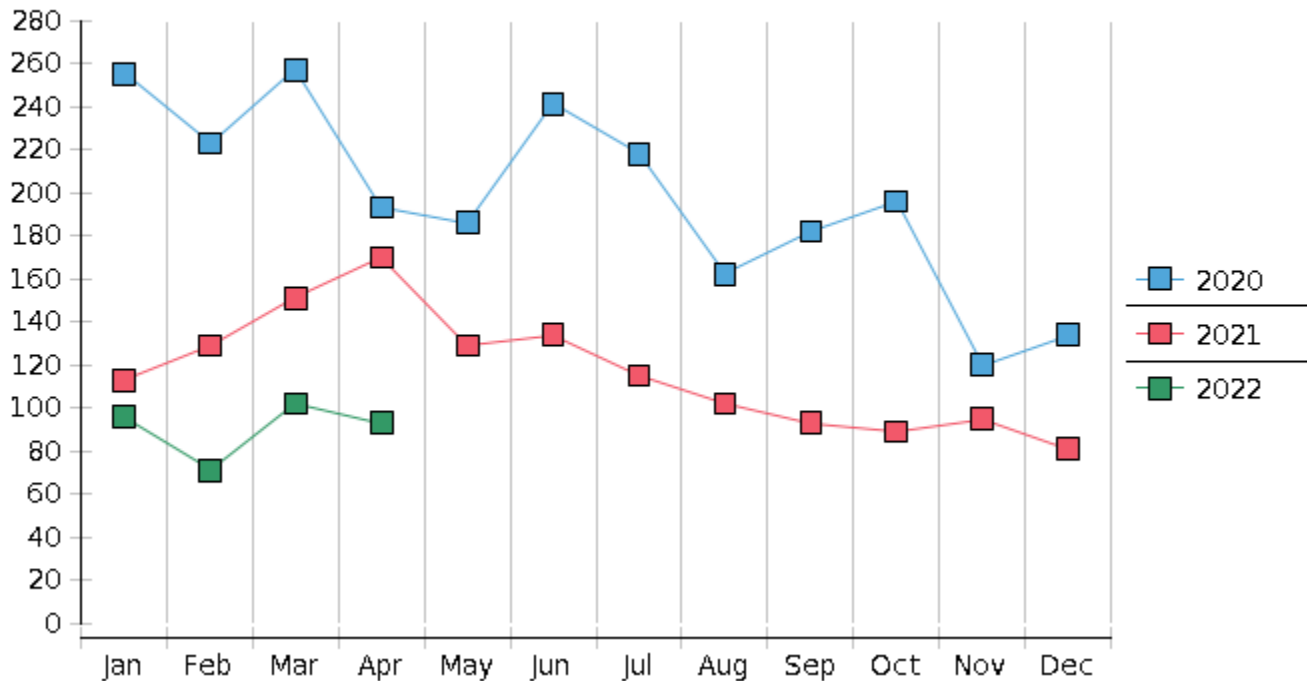
Capsule View	Apr 2022	Mar 2022	Apr 2021	% Change	
	this month	last month	this month last year	from last month	from this month last year
Bankruptcies Filed					
Chapter 7	76	86	149	-11.63%	-48.99%
Chapter 11	0	1	0	-100%	0%
Chapter 12	0	0	1	0%	-100%
Chapter 13	17	15	20	13.33%	-15%
TOTAL BANKRUPTCY FILINGS	93	102	170	-8.82%	-45.29%
Adversaries					
Adversaries Filed	2	1	3	100%	-33.33%
YEAR-TO-DATE	2022(CY)	2021(LY)	% Change		
BANKRUPTCIES FILED²			CY - LY		
Chapter 7	300	512	-41.41%		
Chapter 11	2	1	100%		
Chapter 12	0	1	-100%		
Chapter 13	60	49	22.45%		
<u>TOTAL FILINGS</u>	362	563	-35.7%		
BANKRUPTCIES PENDING⁽¹⁾⁽²⁾					
Chapter 7	531	697	-23.82%		
Chapter 11	23	26	-11.54%		
Chapter 12	0	3	-300%		
Chapter 13	767	832	-7.81%		
<u>TOTAL PENDING</u>	1,321	1,558	-15.21%		
ADVERSARY PROCEEDINGS					
Filed	9	15	-40%		
<u>TOTAL PENDING¹</u>	48	76	-36.84%		
AVERAGES					
Chapter 7 Average Disposition ³ in Days	149	130	14.62%		
Chapter 13 Average Disposition ³ in Days	1201	1084	10.79%		
Chapter 13 Average Days to Confirmation	174	202	-13.86%		

1 Pending totals are generated from CM/ECF on a time frame ending on the last day of the month.

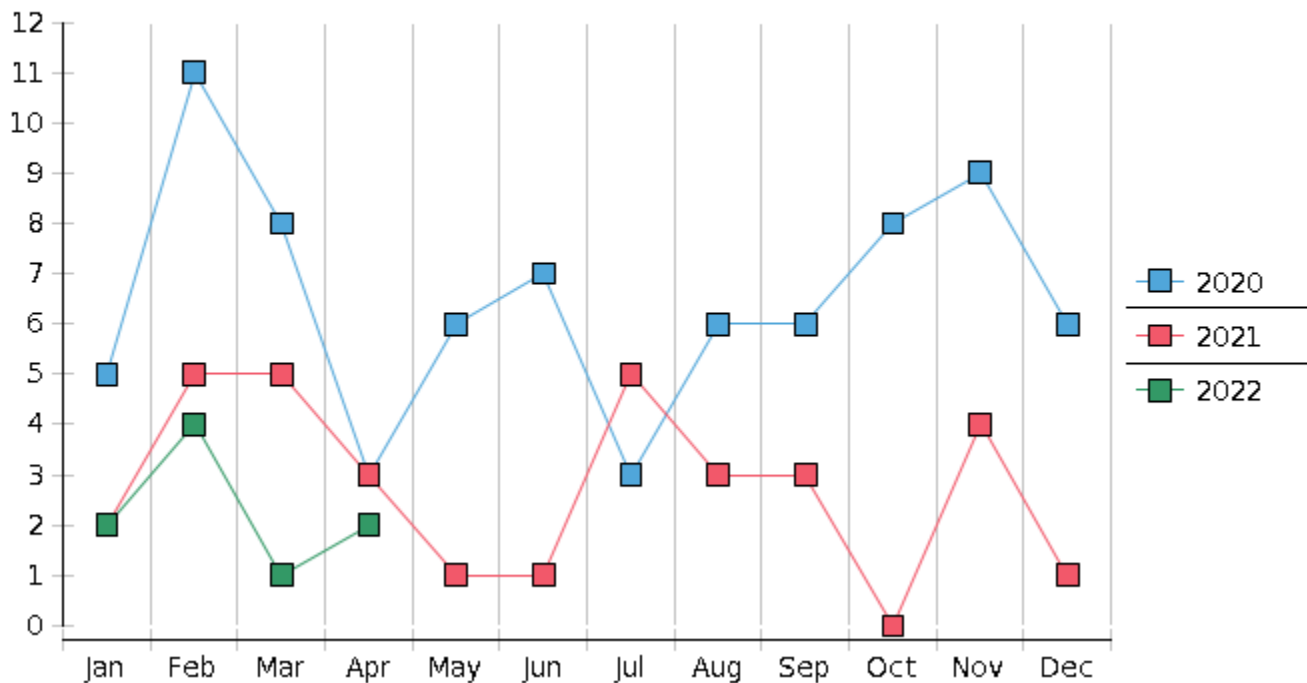
2 Chapter breakdowns are pulled from the Dynamic CM/ECF Database and may change over time due to conversions or other case changes.

3. Average disposition represents number of days from filing to discharge/dismissal of case.

Monthly Bankruptcy Filings



Monthly Adversary Filings



United States Bankruptcy Court - District of New Mexico
 Pro Se Filings

	Jan	Feb	Mar	Apr	May	Jun	Jul	Aug	Sep	Oct	Nov	Dec	YTD Total
2021	113	129	151	170	129	134	115	102	93	89	95	81	1,401
pro se 7	11	14	10	12	10	18	6	8	8	3	5	5	110
pro se 13	2	2	0	3	1	0	2	1	3	1	3	1	19
pro se with BPP	5	10	4	6	5	9	2	2	2	1	4	3	53
% Of Bankruptcies Filed	11.5%	12.4%	6.62%	8.82%	8.53%	13.43%	6.96%	8.82%	11.83%	4.49%	8.42%	7.41%	9.21%
2022	96	71	102	93									362
pro se 7	8	1	2	6									17
pro se 13	2	1	0	2									5
pro se with BPP	5	1	0	0									6
% Of Bankruptcies Filed	10.42%	2.82%	1.96%	8.6%									6.08%
	Jan	Feb	Mar	Apr	May	Jun	Jul	Aug	Sep	Oct	Nov	Dec	YTD Total