

United States Bankruptcy Court

District of New Mexico

September 1, 2021

CM/ECF Real Time Statistics

August 2021 Report

Capsule View	Aug 2021	Jul 2021	Aug 2020	% Change	
	this month	last month	this month last year	from last month	from this month last year
Bankruptcies Filed					
Chapter 7	89	105	148	-15.24%	-39.86%
Chapter 11	0	1	0	-100%	0%
Chapter 12	0	0	0	0%	0%
Chapter 13	13	9	14	44.44%	-7.14%
TOTAL BANKRUPTCY FILINGS	102	115	162	-11.3%	-37.04%
Adversaries					
Adversaries Filed	3	5	6	-40%	-50%
YEAR-TO-DATE					
	2021(CY)		2020(LY)	% Change	
BANKRUPTCIES FILED²				CY - LY	
Chapter 7	949		1,532	-38.05%	
Chapter 11	3		12	-75%	
Chapter 12	1		1	0%	
Chapter 13	90		190	-52.63%	
<u>TOTAL FILINGS</u>	1,043		1,735	-39.88%	
BANKRUPTCIES PENDING⁽¹⁾⁽²⁾					
Chapter 7	542		849	-36.16%	
Chapter 11	26		27	-3.7%	
Chapter 12	1		3	-66.67%	
Chapter 13	817		874	-6.52%	
<u>TOTAL PENDING</u>	1,386		1,753	-20.94%	
ADVERSARY PROCEEDINGS					
Filed	25		49	-48.98%	
<u>TOTAL PENDING¹</u>	62		74	-16.22%	
AVERAGES					
Chapter 7 Average Disposition ³ in Days	128		123	4.07%	
Chapter 13 Average Disposition ³ in Days	1178		921	27.9%	
Chapter 13 Average Days to Confirmation	187		139	34.53%	

1 Pending totals are generated from CM/ECF on a time frame ending on the last day of the month.

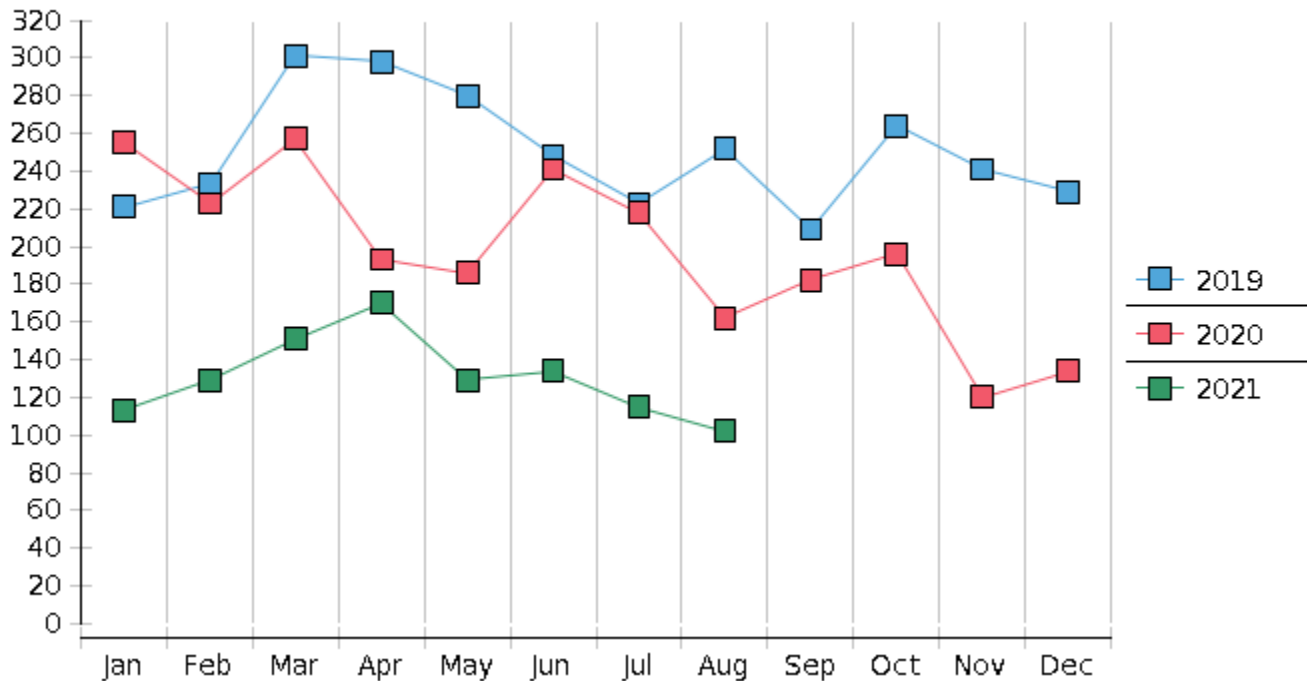
2 Chapter breakdowns are pulled from the Dynamic CM/ECF Database and may change over time due to conversions or other case changes.

3. Average disposition represents number of days from filing to discharge/dismissal of case.

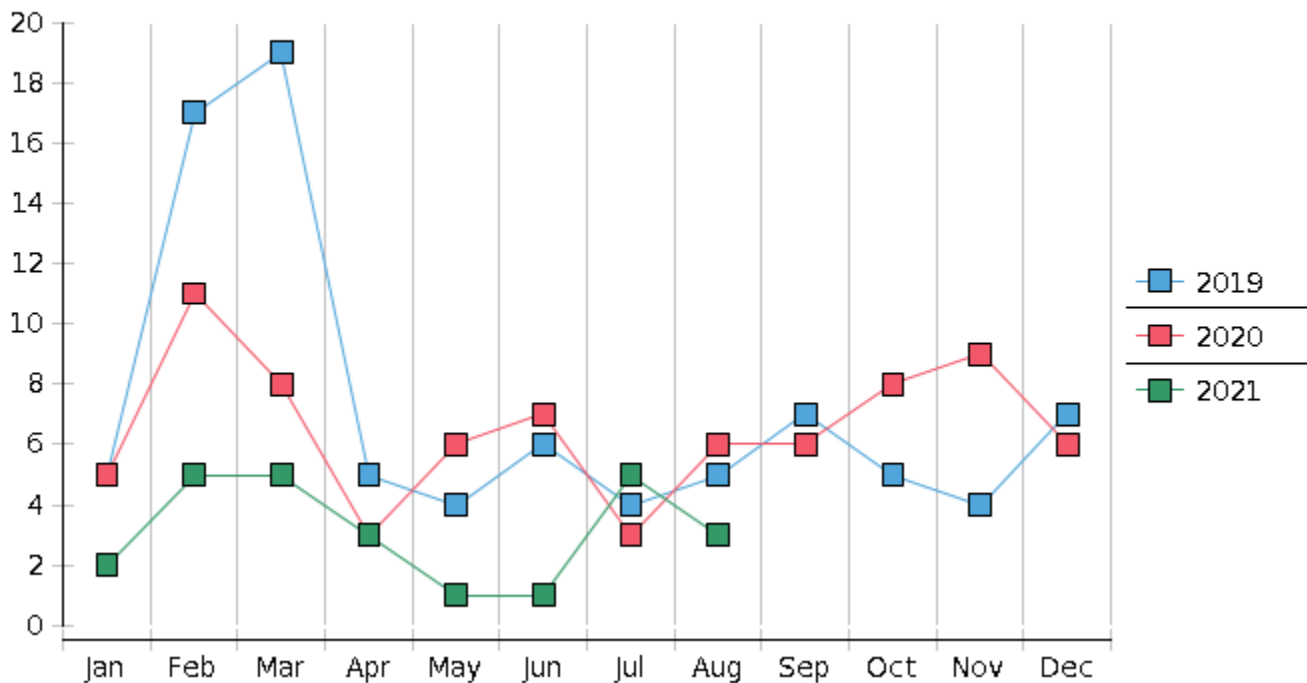
United States Bankruptcy Court - District of New Mexico
 Statistics - Year-To-Date Totals

2021	January	February	March	April	May	June	July	August	September	October	November	December	Total YTD
FILED													FILED
Chapter 7 Combined	106	117	140	149	123	120	105	89					949
Chapter 11	0	1	0	0	0	1	1	0					3
Chapter 12	0	0	0	1	0	0	0	0					1
Chapter 13	7	11	11	20	6	13	9	13					90
Total Filed for Month	113	129	151	170	129	134	115	102					
Totals Filed Year-to-Date	113	242	393	563	692	826	941	1043					1043
CLOSED													CLOSED
Chapter 7 Combined Total	185	158	122	103	107	185	115	172					1147
Asset	1	3	6	6	2	8	5	4					35
No Asset	184	155	116	97	105	177	110	168					1112
Chapter 11	0	0	2	1	0	1	0	2					6
Chapter 12	0	0	0	1	1	0	1	0					3
Chapter 13	10	15	19	16	21	19	12	21					133
Totals Closed for Month	195	173	143	121	129	205	128	195					
Totals Closed Year-to-Date	195	368	511	632	761	966	1094	1289					1289
Closing Breakdown													
Closed by Case Managers	39	26	45	37	33	41	36	42					299
Closed Automatically	156	147	98	84	96	164	92	153					990
Percent Closed by Case Managers	20.0%	15.03%	31.47%	30.58%	25.58%	20.0%	28.13%	21.54%					23.2%
Percent Closed Automatically	80.0%	84.97%	68.53%	69.42%	74.42%	80.0%	71.88%	78.46%					76.8%
PENDING													
Chapter 7	641	601	621	669	691	630	620	542					
Chapter 11	27	28	26	25	25	26	28	26					
Chapter 12	3	3	3	3	2	2	1	1					
Chapter 13	856	853	845	849	834	828	825	817					
Total Pending for Month	1527	1485	1495	1546	1552	1486	1474	1386					
Adversary Proceedings													AP
Filed	2	5	5	3	1	1	5	3					25
Closed	7	2	11	10	6	11	3	4					54
Total Adversaries Pending	84	88	83	76	71	61	63	62					

Monthly Bankruptcy Filings



Monthly Adversary Filings



United States Bankruptcy Court - District of New Mexico
 Pro Se Filings

	Jan	Feb	Mar	Apr	May	Jun	Jul	Aug	Sep	Oct	Nov	Dec	YTD Total
2020	255	223	257	193	186	241	218	162	182	196	120	134	2,367
pro se 7	30	20	26	11	10	20	13	15	10	13	7	11	186
pro se 13	7	4	1	0	1	0	0	0	1	1	0	4	19
pro se with BPP	13	10	15	2	6	14	5	6	6	8	4	4	93
% Of Bankruptcies Filed	14.51%	10.76%	10.51%	5.7%	5.91%	8.3%	5.96%	9.26%	6.59%	7.14%	5.83%	11.19%	8.66%
2021	113	129	151	170	129	134	115	102					1,043
pro se 7	11	14	10	12	10	18	6	8					89
pro se 13	2	2	0	3	1	0	2	1					11
pro se with BPP	5	10	4	6	5	9	2	2					43
% Of Bankruptcies Filed	11.5%	12.4%	6.62%	8.82%	8.53%	13.43%	6.96%	8.82%					9.59%
	Jan	Feb	Mar	Apr	May	Jun	Jul	Aug	Sep	Oct	Nov	Dec	YTD Total