

United States Bankruptcy Court
District of New Mexico

March 1, 2019

CM/ECF Real Time Statistics

February 2019 Report

Capsule View	Feb 2019	Jan 2019	Feb 2018	% Change	
	this month	last month	this month last year	from last month	from this month last year
Bankruptcies Filed					
Chapter 7	196	194	230	1.03%	-14.78%
Chapter 11	3	0	1	300%	200%
Chapter 12	0	0	0	0%	0%
Chapter 13	34	27	18	25.93%	88.89%
TOTAL BANKRUPTCY FILINGS	233	221	249	5.43%	-6.43%
Adversaries					
Adversaries Filed	16	5	8	220%	100%
YEAR-TO-DATE	2019(CY)		2018(LY)	% Change	
BANKRUPTCIES FILED ²				CY - LY	
Chapter 7	390		446	-12.56%	
Chapter 11	3		1	200%	
Chapter 12	0		0	0%	
Chapter 13	61		47	29.79%	
<u>TOTAL FILINGS</u>	454		494	-8.1%	
BANKRUPTCIES PENDING ⁽¹⁾⁽²⁾					
Chapter 7	940		1,012	-7.11%	
Chapter 11	44		72	-38.89%	
Chapter 12	5		6	-16.67%	
Chapter 13	871		757	15.06%	
<u>TOTAL PENDING</u>	1,860		1,847	0.7%	
ADVERSARY PROCEEDINGS					
Filed	21		10	110%	
<u>TOTAL PENDING¹</u>	90		129	-30.23%	
AVERAGES					
Chapter 7 Average Disposition ³ in Days	128		115	11.3%	
Chapter 13 Average Disposition ³ in Days	868		966	-10.14%	
Chapter 13 Average Days to Confirmation	139		134	3.73%	

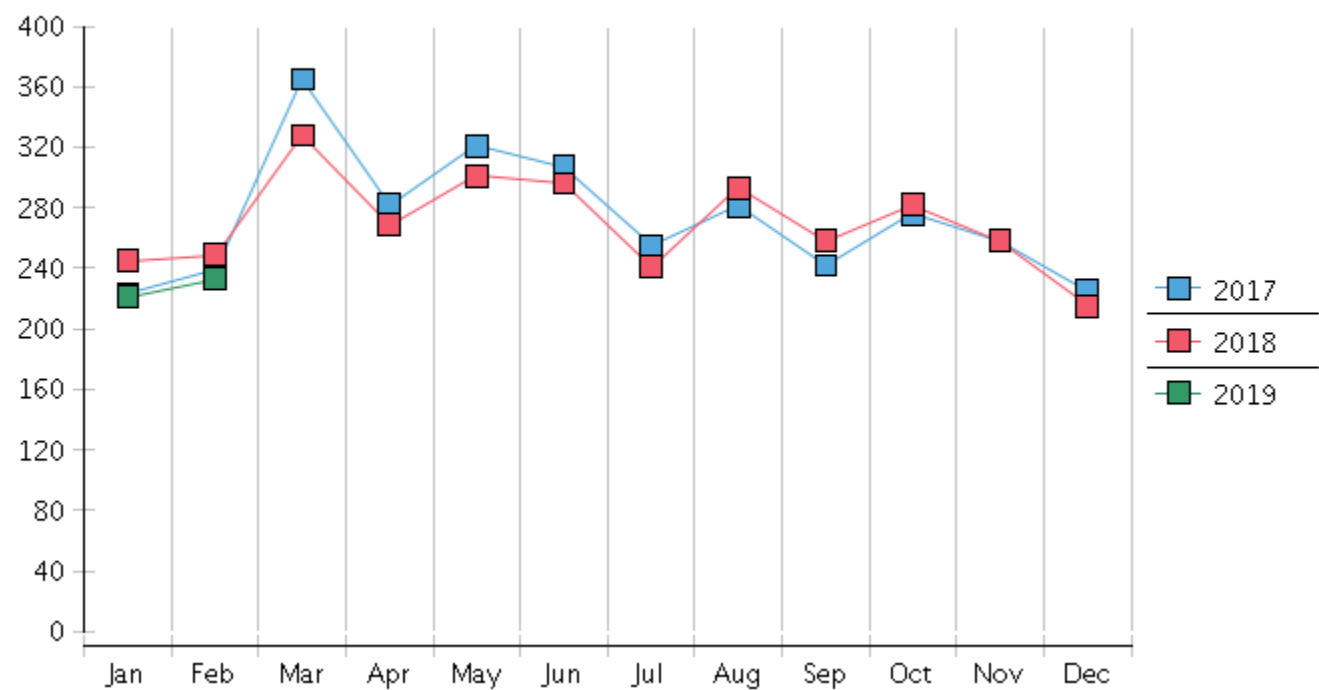
1 Pending totals are generated from CM/ECF on a time frame ending on the last day of the month.

2 Chapter breakdowns are pulled from the Dynamic CM/ECF Database and may change over time due to conversions or other case changes.

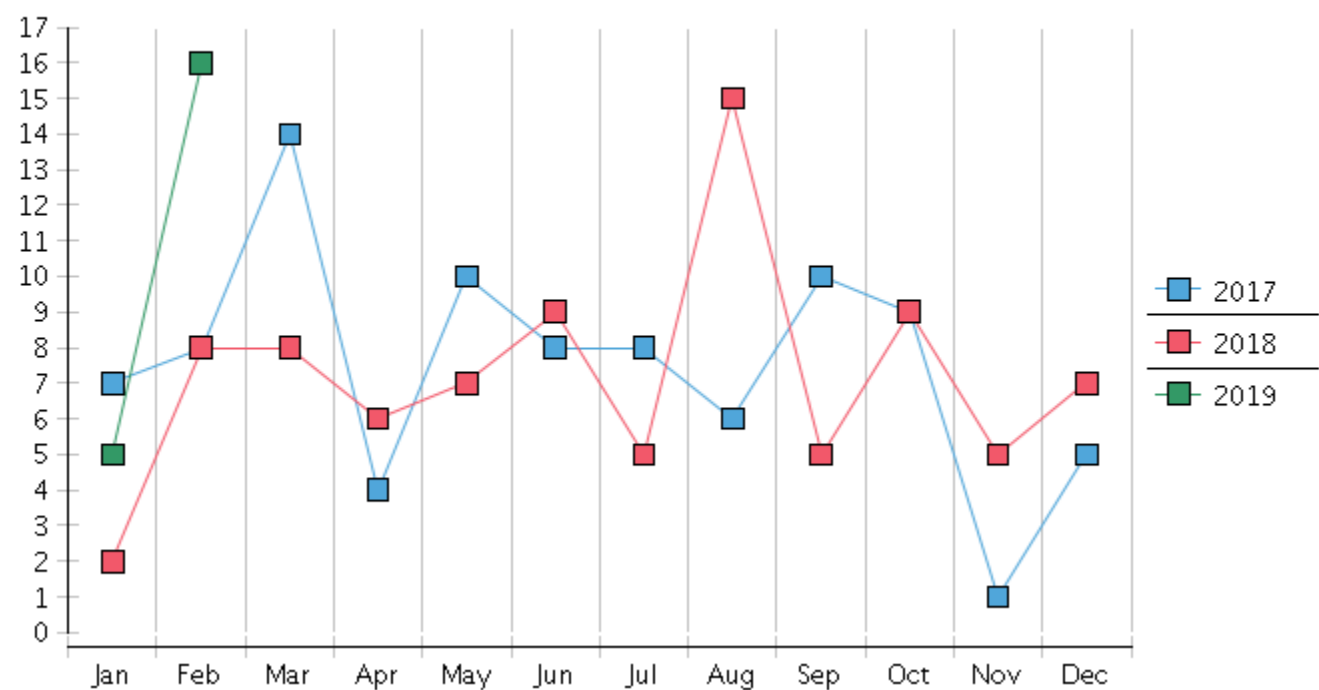
3. Average disposition represents number of days from filing to discharge/dismissal of case.

United States Bankruptcy Court - District of New Mexico
Statistics - Year-To-Date Totals[illegible]

Monthly Bankruptcy Filings



Monthly Adversary Filings



United States Bankruptcy Court - District of New Mexico
Pro Se Filings

	Jan	Feb	Mar	Apr	May	Jun	Jul	Aug	Sep	Oct	Nov	Dec	YTD Total
2018	245	249	328	269	301	296	241	293	258	282	258	215	3,235
pro se 7	22	20	22	20	38	29	32	29	19	21	20	25	297
pro se 13	2	2	5	1	1	2	2	4	3	4	2	2	30
pro se with BPP	16	11	16	14	29	15	23	19	12	8	10	16	189
% Of Bankruptcies Filed	9.8%	8.84%	8.23%	7.81%	12.96%	10.47%	14.11%	11.6%	8.53%	8.87%	8.53%	12.56%	10.11%
2019	221	233											454
pro se 7	27	18											45
pro se 13	4	8											12
pro se with BPP	19	10											29
% Of Bankruptcies Filed	14.03%	11.16%											12.56%
	Jan	Feb	Mar	Apr	May	Jun	Jul	Aug	Sep	Oct	Nov	Dec	YTD Total