

United States Bankruptcy Court

District of New Mexico

March 1, 2022

CM/ECF Real Time Statistics

February 2022 Report

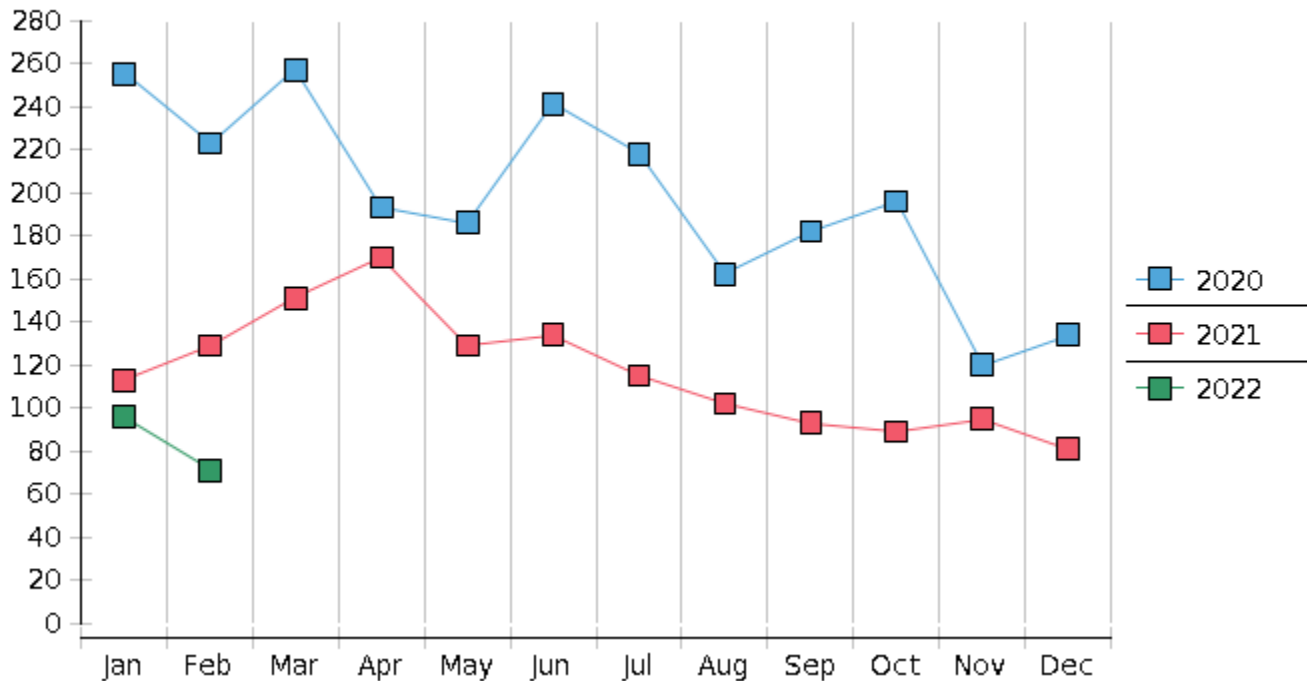
Capsule View	Feb 2022	Jan 2022	Feb 2021	% Change	
	this month	last month	this month last year	from last month	from this month last year
Bankruptcies Filed					
Chapter 7	57	81	117	-29.63%	-51.28%
Chapter 11	0	1	1	-100%	-100%
Chapter 12	0	0	0	0%	0%
Chapter 13	14	14	11	0%	27.27%
TOTAL BANKRUPTCY FILINGS	71	96	129	-26.04%	-44.96%
Adversaries					
Adversaries Filed	4	2	5	100%	-20%
YEAR-TO-DATE					
	2022(CY)	2021(LY)	% Change		
BANKRUPTCIES FILED²			CY - LY		
Chapter 7	138	223	-38.12%		
Chapter 11	1	1	0%		
Chapter 12	0	0	0%		
Chapter 13	28	18	55.56%		
TOTAL FILINGS	167	242	-30.99%		
BANKRUPTCIES PENDING⁽¹⁾⁽²⁾					
Chapter 7	408	614	-33.55%		
Chapter 11	27	28	-3.57%		
Chapter 12	0	3	-300%		
Chapter 13	782	841	-7.02%		
TOTAL PENDING	1,217	1,486	-18.1%		
ADVERSARY PROCEEDINGS					
Filed	6	7	-14.29%		
TOTAL PENDING¹	50	88	-43.18%		
AVERAGES					
Chapter 7 Average Disposition ³ in Days	132	123	7.32%		
Chapter 13 Average Disposition ³ in Days	1229	1159	6.04%		
Chapter 13 Average Days to Confirmation	182	204	-10.78%		

1 Pending totals are generated from CM/ECF on a time frame ending on the last day of the month.

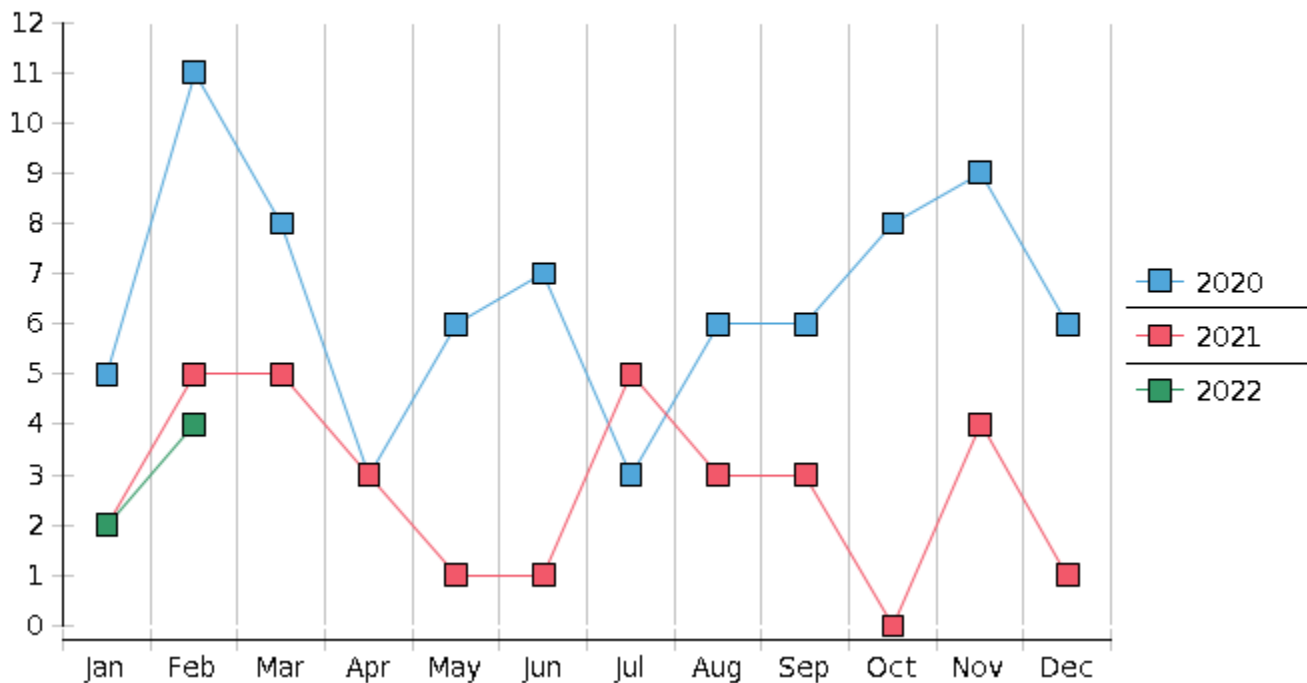
2 Chapter breakdowns are pulled from the Dynamic CM/ECF Database and may change over time due to conversions or other case changes.

3. Average disposition represents number of days from filing to discharge/dismissal of case.

Monthly Bankruptcy Filings



Monthly Adversary Filings



United States Bankruptcy Court - District of New Mexico

Pro Se Filings

	Jan	Feb	Mar	Apr	May	Jun	Jul	Aug	Sep	Oct	Nov	Dec	YTD Total
2021	113	129	151	170	129	134	115	102	93	89	95	81	1,401
pro se 7	11	14	10	12	10	18	6	8	8	3	5	5	110
pro se 13	2	2	0	3	1	0	2	1	3	1	3	1	19
pro se with BPP	5	10	4	6	5	9	2	2	2	1	4	3	53
% Of Bankruptcies Filed	11.5%	12.4%	6.62%	8.82%	8.53%	13.43%	6.96%	8.82%	11.83%	4.49%	8.42%	7.41%	9.21%
2022	96	71											167
pro se 7	8	1											9
pro se 13	2	1											3
pro se with BPP	5	1											6
% Of Bankruptcies Filed	10.42%	2.82%											7.19%
	Jan	Feb	Mar	Apr	May	Jun	Jul	Aug	Sep	Oct	Nov	Dec	YTD Total