

United States Bankruptcy Court
District of New Mexico

February 3, 2020
CM/ECF Real Time Statistics
January 2020 Report

Capsule View	Jan 2020	Dec 2019	Jan 2019	% Change	
	this month	last month	this month last year	from last month	from this month last year
Bankruptcies Filed					
Chapter 7	222	198	194	12.12%	14.43%
Chapter 11	0	0	0	0%	0%
Chapter 12	0	0	0	0%	0%
Chapter 13	33	31	27	6.45%	22.22%
TOTAL BANKRUPTCY FILINGS	255	229	221	11.35%	15.38%
Adversaries					
Adversaries Filed	5	7	5	-28.57%	0%
YEAR-TO-DATE	2020(CY)	2019(LY)		% Change	
BANKRUPTCIES FILED ²				CY - LY	
Chapter 7	222	194		14.43%	
Chapter 11	0	0		0%	
Chapter 12	0	0		0%	
Chapter 13	33	27		22.22%	
<u>TOTAL FILINGS</u>	255	221		15.38%	
BANKRUPTCIES PENDING ⁽¹⁾⁽²⁾					
Chapter 7	958	1,084		-11.62%	
Chapter 11	37	36		2.78%	
Chapter 12	3	7		-57.14%	
Chapter 13	912	830		9.88%	
<u>TOTAL PENDING</u>	1,910	1,957		-2.4%	
ADVERSARY PROCEEDINGS					
Filed	5	5		0%	
<u>TOTAL PENDING¹</u>	76	81		-6.17%	
AVERAGES					
Chapter 7 Average Disposition ³ in Days	133	129		3.1%	
Chapter 13 Average Disposition ³ in Days	880	830		6.02%	
Chapter 13 Average Days to Confirmation	115	135		-14.81%	

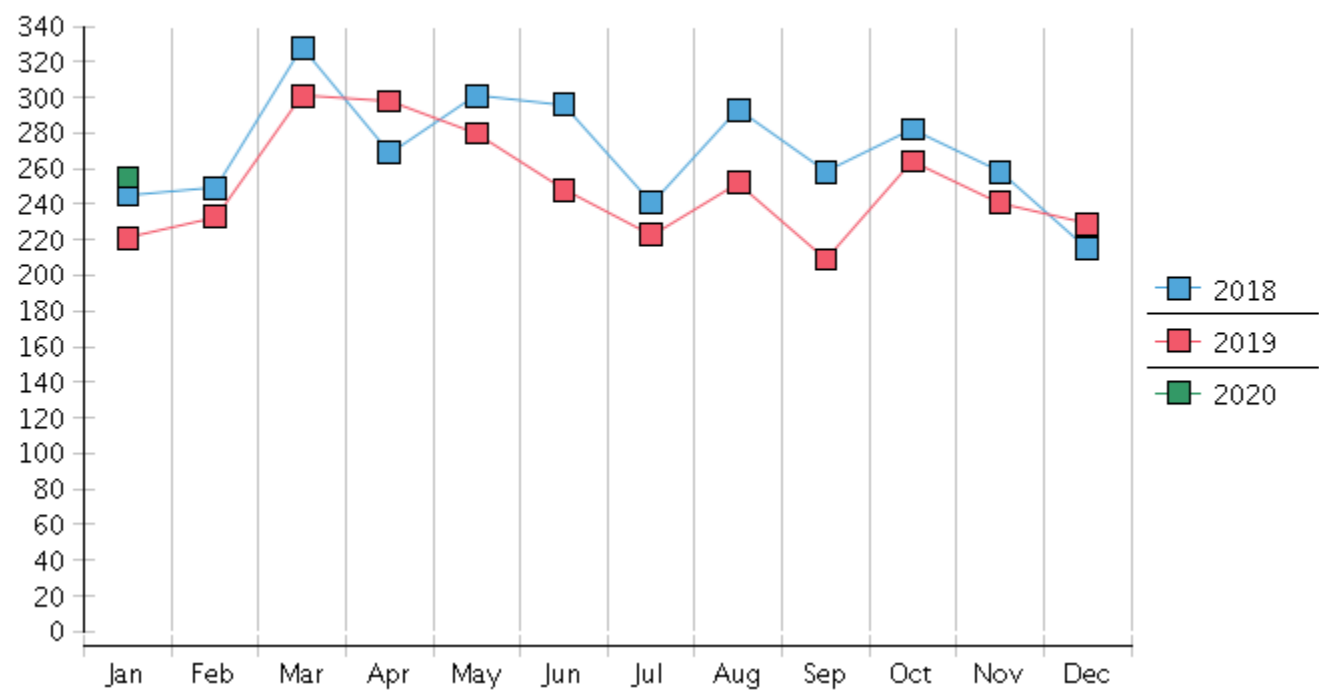
1 Pending totals are generated from CM/ECF on a time frame ending on the last day of the month.

2 Chapter breakdowns are pulled from the Dynamic CM/ECF Database and may change over time due to conversions or other case changes.

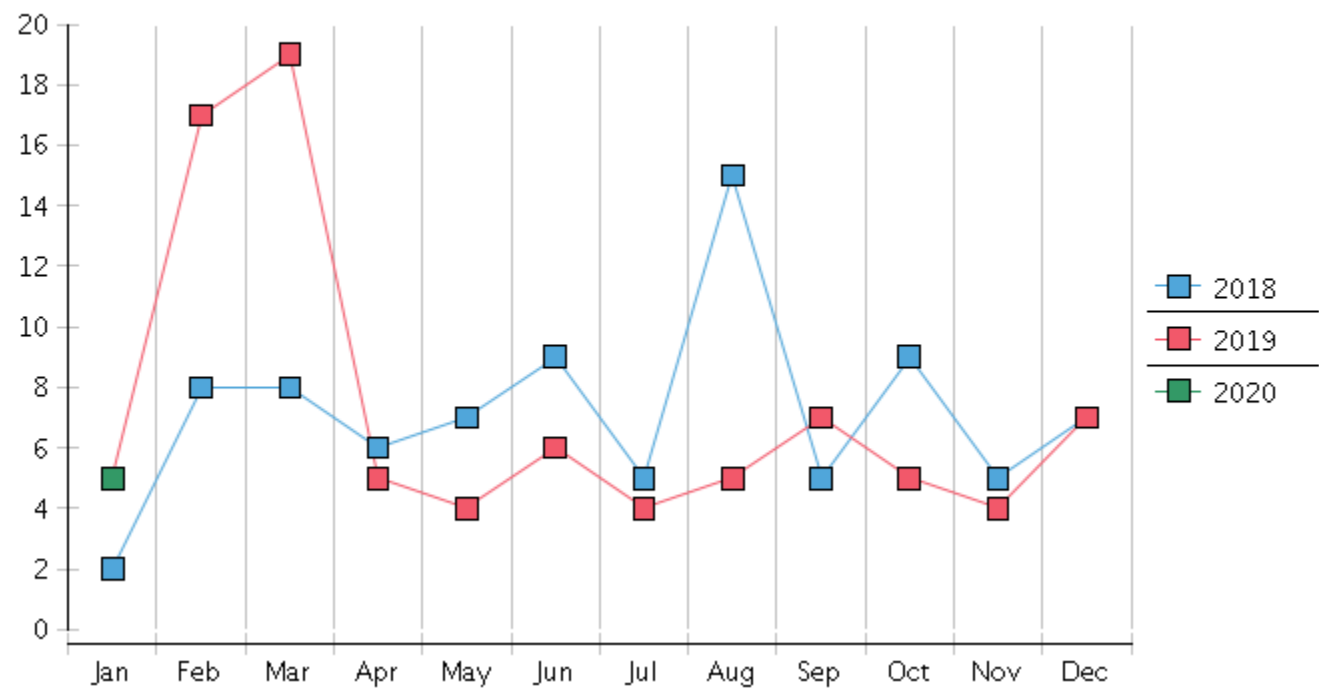
3. Average disposition represents number of days from filing to discharge/dismissal of case.

United States Bankruptcy Court - District of New Mexico
Statistics - Year-To-Date Totals[illegible]

Monthly Bankruptcy Filings



Monthly Adversary Filings



United States Bankruptcy Court - District of New Mexico
Pro Se Filings

	Jan	Feb	Mar	Apr	May	Jun	Jul	Aug	Sep	Oct	Nov	Dec	YTD Total
2019	221	233	301	298	280	248	223	252	209	264	241	229	2,999
pro se 7	28	18	23	26	18	15	19	19	22	30	17	16	251
pro se 13	3	8	7	3	6	8	6	7	4	5	3	5	65
pro se with BPP	19	10	14	15	11	10	9	8	11	18	14	8	147
% Of Bankruptcies Filed	14.03%	11.16%	9.97%	9.73%	8.93%	9.27%	11.21%	10.32%	12.44%	13.26%	8.3%	9.17%	10.54%
2020	255												255
pro se 7	30												30
pro se 13	7												7
pro se with BPP	12												12
% Of Bankruptcies Filed	14.51%												14.51%
	Jan	Feb	Mar	Apr	May	Jun	Jul	Aug	Sep	Oct	Nov	Dec	YTD Total