

United States Bankruptcy Court
District of New Mexico

February 2, 2021
CM/ECF Real Time Statistics
January 2021 Report

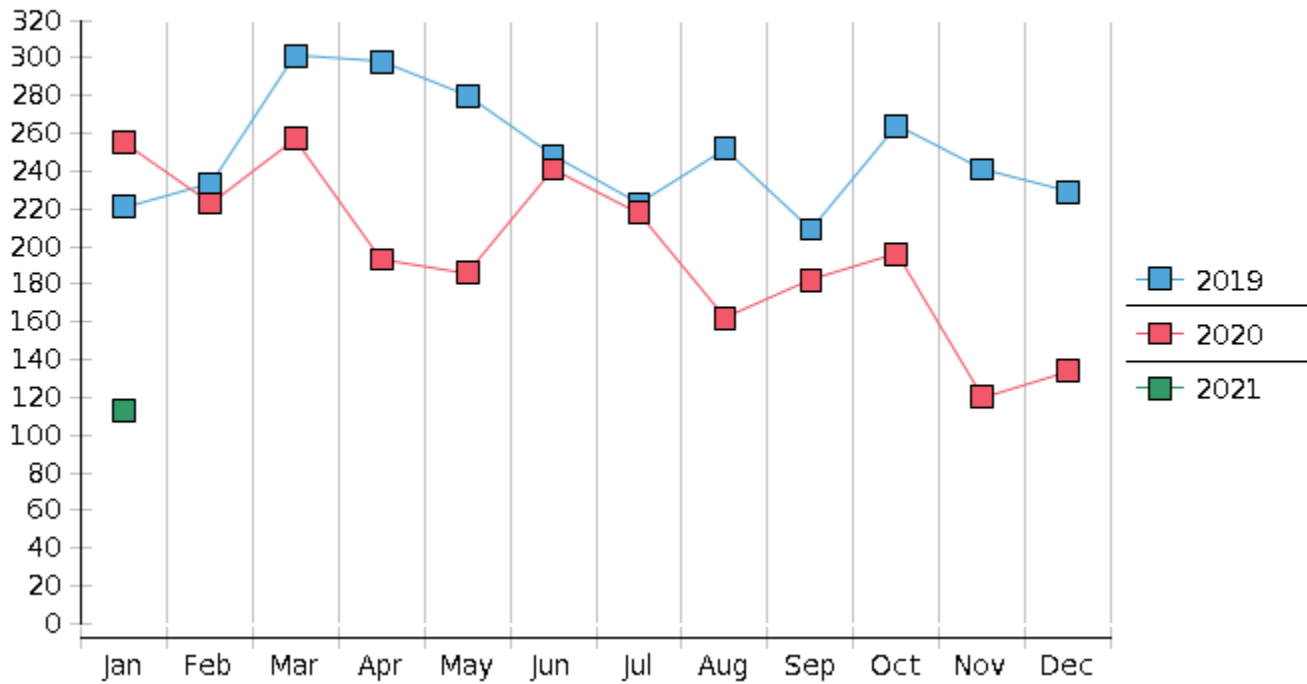
Capsule View	Jan 2021	Dec 2020	Jan 2020	% Change	
	this month	last month	this month last year	from last month	from this month last year
Bankruptcies Filed					
Chapter 7	106	121	222	-12.4%	-52.25%
Chapter 11	0	2	0	-200%	0%
Chapter 12	0	0	0	0%	0%
Chapter 13	7	11	33	-36.36%	-78.79%
TOTAL BANKRUPTCY FILINGS	113	134	255	-15.67%	-55.69%
Adversaries					
Adversaries Filed	2	6	5	-66.67%	-60%
YEAR-TO-DATE	2021(CY)	2020(LY)	% Change		
BANKRUPTCIES FILED²			CY - LY		
Chapter 7	106	222	-52.25%		
Chapter 11	0	0	0%		
Chapter 12	0	0	0%		
Chapter 13	7	33	-78.79%		
<u>TOTAL FILINGS</u>	113	255	-55.69%		
BANKRUPTCIES PENDING⁽¹⁾⁽²⁾					
Chapter 7	620	998	-37.88%		
Chapter 11	32	33	-3.03%		
Chapter 12	3	3	0%		
Chapter 13	870	869	0.12%		
<u>TOTAL PENDING</u>	1,525	1,903	-19.86%		
ADVERSARY PROCEEDINGS					
Filed	2	5	-60%		
<u>TOTAL PENDING¹</u>	84	76	10.53%		
AVERAGES					
Chapter 7 Average Disposition ³ in Days	126	133	-5.26%		
Chapter 13 Average Disposition ³ in Days	864	864	0%		
Chapter 13 Average Days to Confirmation	187	118	58.47%		

1 Pending totals are generated from CM/ECF on a time frame ending on the last day of the month.

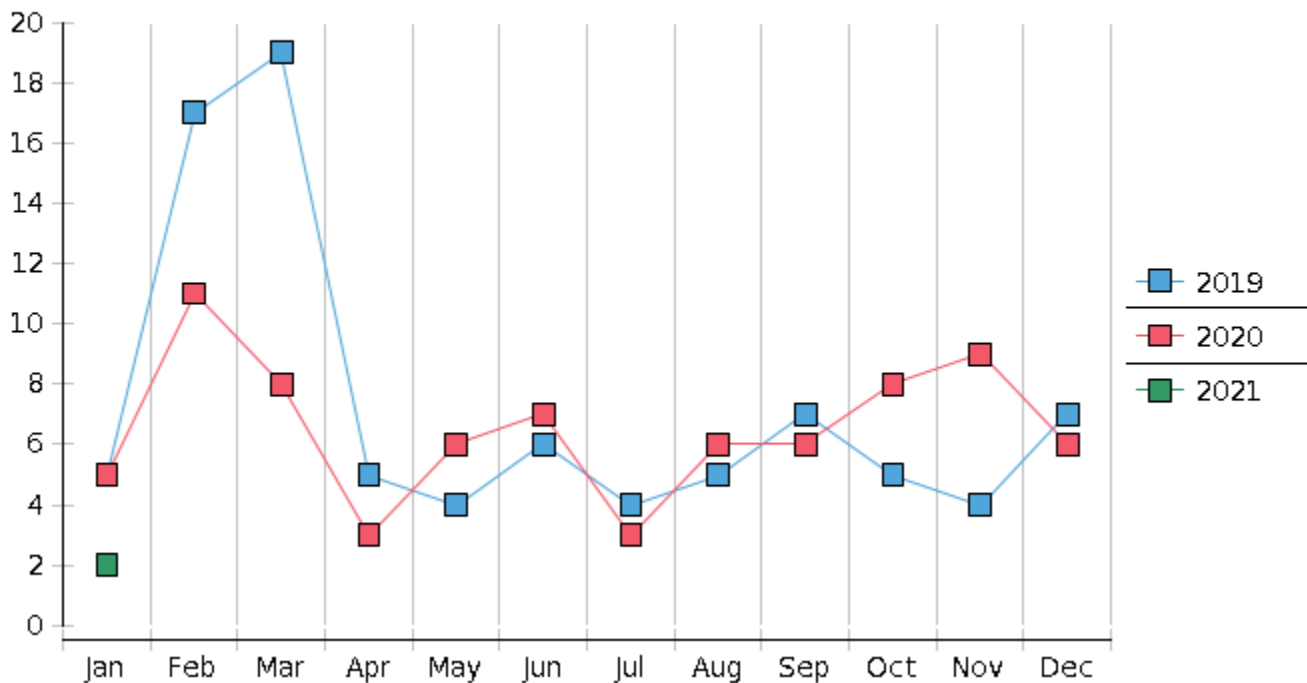
2 Chapter breakdowns are pulled from the Dynamic CM/ECF Database and may change over time due to conversions or other case changes.

3. Average disposition represents number of days from filing to discharge/dismissal of case.

Monthly Bankruptcy Filings



Monthly Adversary Filings



United States Bankruptcy Court - District of New Mexico
 Pro Se Filings

	Jan	Feb	Mar	Apr	May	Jun	Jul	Aug	Sep	Oct	Nov	Dec	YTD Total
2020	255	223	257	193	186	241	218	162	182	196	120	134	2,367
pro se 7	30	20	26	11	10	20	13	15	10	13	7	11	186
pro se 13	7	4	1	0	1	0	0	0	1	1	0	4	19
pro se with BPP	13	10	15	2	6	14	5	6	6	8	4	4	93
% Of Bankruptcies Filed	14.51%	10.76%	10.51%	5.7%	5.91%	8.3%	5.96%	9.26%	6.59%	7.14%	5.83%	11.19%	8.66%
2021	113												113
pro se 7	11												11
pro se 13	2												2
pro se with BPP	5												5
% Of Bankruptcies Filed	11.5%												11.5%
	Jan	Feb	Mar	Apr	May	Jun	Jul	Aug	Sep	Oct	Nov	Dec	YTD Total