

United States Bankruptcy Court  
District of New Mexico

August 1, 2025  
CM/ECF Real Time Statistics  
**July 2025 Report**

Capsule View	Jul 2025	Jun 2025	Jul 2024	% Change	
	this month	last month	this month last year	from last month	from this month last year
Bankruptcies Filed					
Chapter 7	111	129	111	-13.95%	0%
Chapter 11	1	1	1	0%	0%
Chapter 12	0	0	0	0%	0%
Chapter 13	22	22	21	0%	4.76%
TOTAL BANKRUPTCY FILINGS	134	152	133	-11.84%	0.75%
Adversaries					
Adversaries Filed	5	3	3	66.67%	66.67%
YEAR-TO-DATE	2025(CY)	2024(LY)	% Change		
BANKRUPTCIES FILED <sup>2</sup>				CY - LY	
Chapter 7	825	684	20.61%		
Chapter 11	5	5	0%		
Chapter 12	0	0	0%		
Chapter 13	127	112	13.39%		
<b><u>TOTAL FILINGS</u></b>	957	801	19.48%		
BANKRUPTCIES PENDING <sup>(1)(2)</sup>					
Chapter 7	507	448	13.17%		
Chapter 11	14	17	-17.65%		
Chapter 12	2	0	200%		
Chapter 13	539	576	-6.42%		
<b><u>TOTAL PENDING</u></b>	1,062	1,041	2.02%		
ADVERSARY PROCEEDINGS					
Filed	27	21	28.57%		
<b><u>TOTAL PENDING<sup>1</sup></u></b>	41	41	0%		
AVERAGES					
Chapter 7 Average Disposition <sup>3</sup> in Days	117	133	-12.03%		
Chapter 13 Average Disposition <sup>3</sup> in Days	1181	1261	-6.34%		
Chapter 13 Average Days to Confirmation	180	151	19.21%		

1 Pending totals are generated from CM/ECF on a time frame ending on the last day of the month.

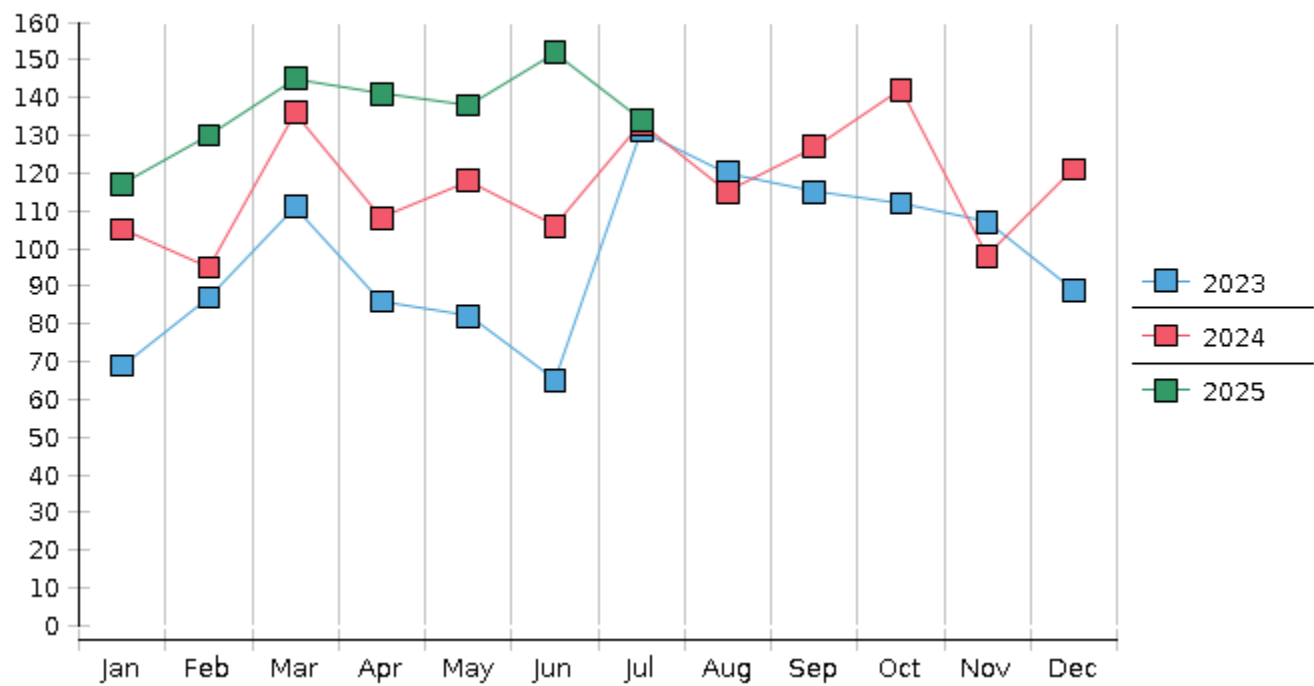
2 Chapter breakdowns are pulled from the Dynamic CM/ECF Database and may change over time due to conversions or other case changes.

3. Average disposition represents number of days from filing to discharge/dismissal of case.

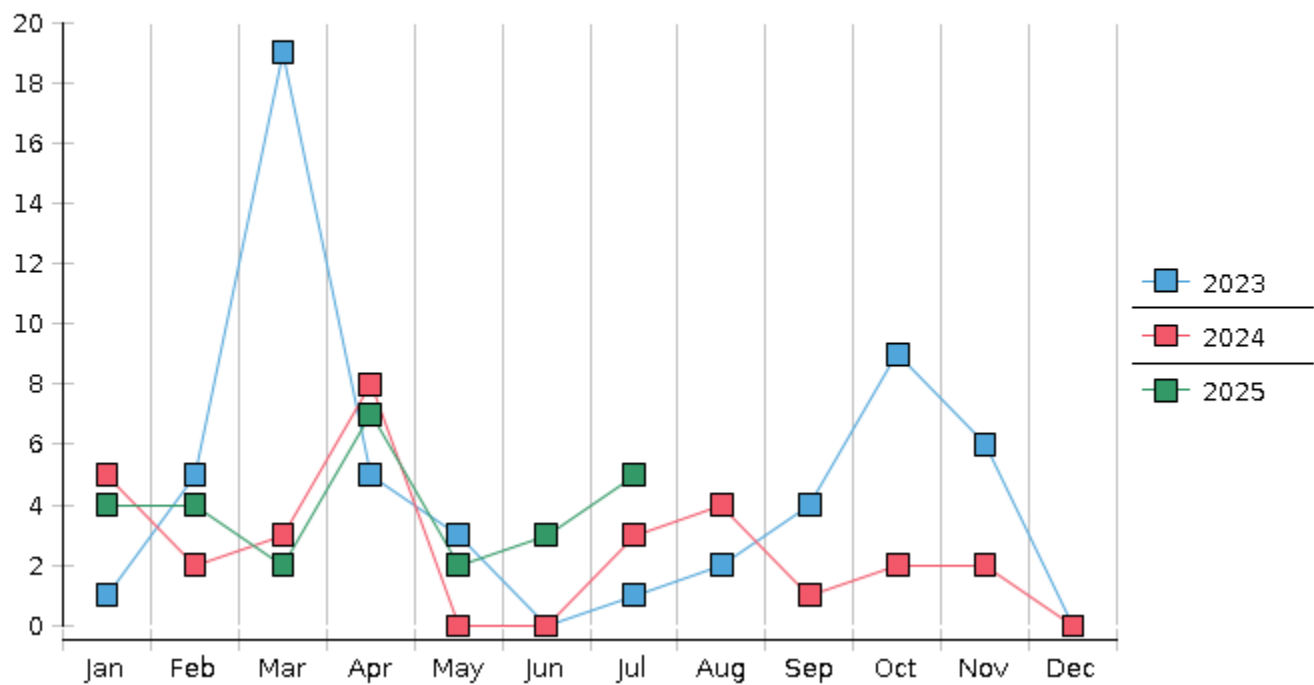
United States Bankruptcy Court - District of New Mexico  
Statistics - Year-To-Date Totals

<b>2025</b>	January	February	March	April	May	June	July	August	September	October	November	December	Total YTD
<b>FILED</b>													<b>FILED</b>
Chapter 7 Combined	99	117	130	118	121	129	111						825
Chapter 11	1	1	0	1	0	1	1						5
Chapter 12	0	0	0	0	0	0	0						0
Chapter 13	17	12	15	22	17	22	22						127
Total Filed for Month	117	130	145	141	138	152	134						
Totals Filed Year-to-Date	117	247	392	533	671	823	957						957
<b>CLOSED</b>													<b>CLOSED</b>
Chapter 7 Combined Total	126	98	104	69	107	169	112						785
Asset	0	1	0	1	2	2	4						10
No Asset	126	97	104	68	105	167	108						775
Chapter 11	1	0	1	4	1	1	1						9
Chapter 12	0	0	0	0	0	0	0						0
Chapter 13	15	32	18	14	25	21	15						140
Totals Closed for Month	142	130	123	87	133	191	128						
Totals Closed Year-to-Date	142	272	395	482	615	806	934						934
<b>Closing Breakdown</b>													
Closed by Case Managers	34	45	29	32	41	38	29						248
Closed Automatically	108	85	94	55	92	153	99						686
Percent Closed by Case Managers	23.94%	34.62%	23.58%	36.78%	30.83%	19.9%	22.66%						26.55%
Percent Closed Automatically	76.06%	65.38%	76.42%	63.22%	69.17%	80.1%	77.34%						73.45%
<b>PENDING</b>													
Chapter 7	430	452	481	532	545	506	507						
Chapter 11	15	16	16	15	14	14	14						
Chapter 12	1	1	1	2	2	2	2						
Chapter 13	554	534	531	538	531	532	539						
Total Pending for Month	1000	1003	1029	1087	1092	1054	1062						
<b>Adversary Proceedings</b>													<b>AP</b>
Filed	4	4	2	7	2	3	5						27
Closed	3	5	2	1	2	2	2						17
Total Adversaries Pending	32	31	31	37	37	38	41						

Monthly Bankruptcy Filings



Monthly Adversary Filings



United States Bankruptcy Court - District of New Mexico  
Pro Se Filings

	Jan	Feb	Mar	Apr	May	Jun	Jul	Aug	Sep	Oct	Nov	Dec	YTD Total
2024	105	95	136	108	118	106	133	115	127	142	98	121	1,404
pro se 7	5	7	6	2	7	9	5	8	6	7	7	6	75
pro se 13	4	0	0	1	1	0	5	2	4	2	1	2	22
pro se with BPP	1	2	0	1	2	1	2	1	1	2	0	0	13
% Of Bankruptcies Filed	9.52%	7.37%	4.41%	2.78%	7.63%	8.49%	7.52%	8.7%	7.87%	6.34%	8.16%	6.61%	6.91%
2025	117	130	145	141	138	152	134						957
pro se 7	8	6	5	6	11	11	7						54
pro se 13	1	3	3	1	5	3	4						20
pro se with BPP	1	2	2	1	3	3	2						14
% Of Bankruptcies Filed	7.69%	6.92%	5.52%	5.67%	11.59%	9.21%	8.21%						7.73%
	Jan	Feb	Mar	Apr	May	Jun	Jul	Aug	Sep	Oct	Nov	Dec	YTD Total