

United States Bankruptcy Court
District of New Mexico

July 2, 2024

CM/ECF Real Time Statistics

June 2024 Report

Capsule View	Jun 2024	May 2024	Jun 2023	% Change	
	this month	last month	this month last year	from last month	from this month last year
Bankruptcies Filed					
Chapter 7	90	96	51	-6.25%	76.47%
Chapter 11	0	1	1	-100%	-100%
Chapter 12	0	0	0	0%	0%
Chapter 13	16	21	13	-23.81%	23.08%
TOTAL BANKRUPTCY FILINGS	106	118	65	-10.17%	63.08%
Adversaries					
Adversaries Filed	0	0	0	0%	0%
YEAR-TO-DATE					
	2024(CY)		2023(LY)	% Change	
BANKRUPTCIES FILED²				CY - LY	
Chapter 7	573		400	43.25%	
Chapter 11	4		2	100%	
Chapter 12	0		0	0%	
Chapter 13	91		98	-7.14%	
<u>TOTAL FILINGS</u>	668		500	33.6%	
BANKRUPTCIES PENDING⁽¹⁾⁽²⁾					
Chapter 7	453		413	9.69%	
Chapter 11	20		16	25%	
Chapter 12	0		0	0%	
Chapter 13	586		629	-6.84%	
<u>TOTAL PENDING</u>	1,059		1,058	0.09%	
ADVERSARY PROCEEDINGS					
Filed	18		33	-45.45%	
<u>TOTAL PENDING¹</u>	39		42	-7.14%	
AVERAGES					
Chapter 7 Average Disposition ³ in Days	134		169	-20.71%	
Chapter 13 Average Disposition ³ in Days	1312		1202	9.15%	
Chapter 13 Average Days to Confirmation	159		148	7.43%	

1 Pending totals are generated from CM/ECF on a time frame ending on the last day of the month.

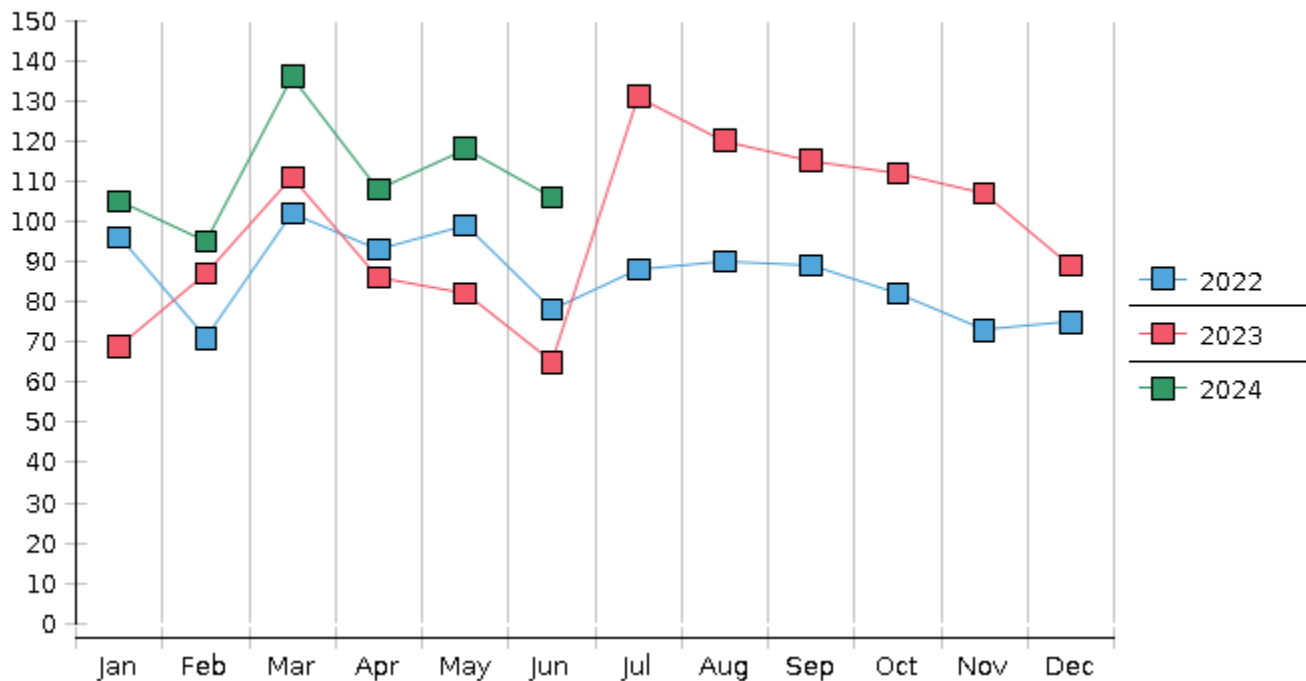
2 Chapter breakdowns are pulled from the Dynamic CM/ECF Database and may change over time due to conversions or other case changes.

3. Average disposition represents number of days from filing to discharge/dismissal of case.

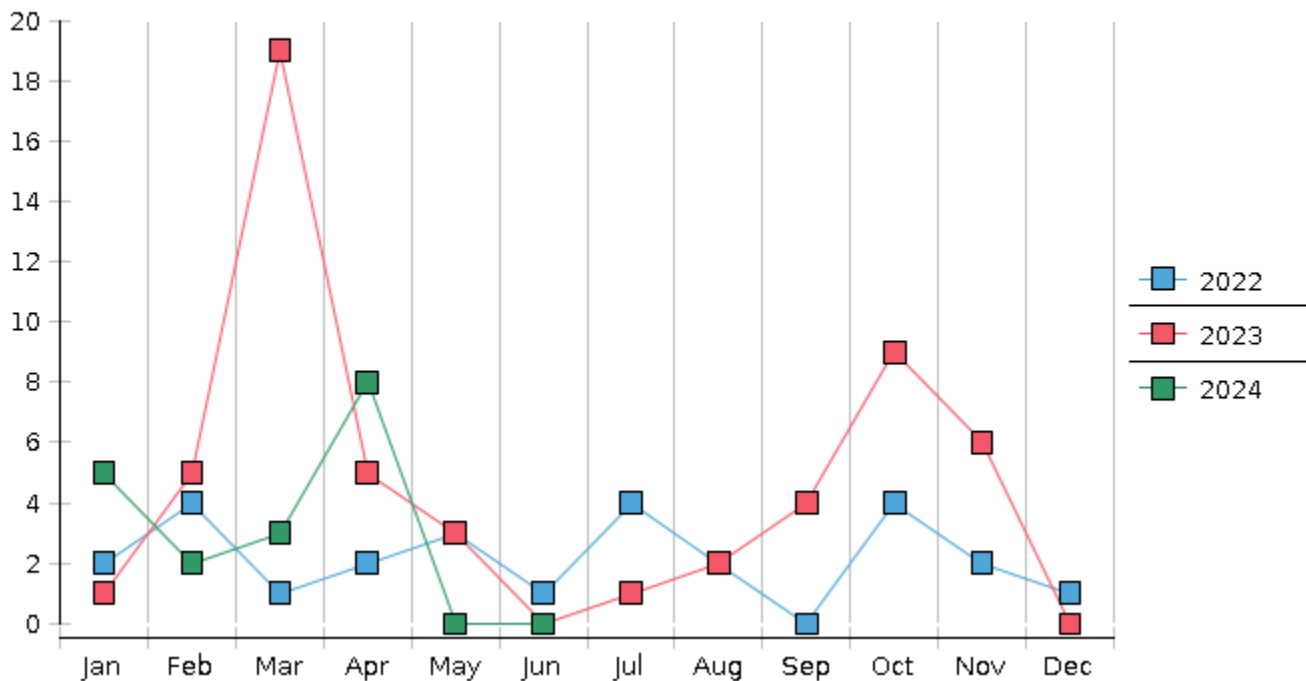
United States Bankruptcy Court - District of New Mexico
 Statistics - Year-To-Date Totals

2024	January	February	March	April	May	June	July	August	September	October	November	December	Total YTD
FILED													FILED
Chapter 7 Combined	92	86	117	92	96	90							573
Chapter 11	1	1	0	1	1	0							4
Chapter 12	0	0	0	0	0	0							0
Chapter 13	12	8	19	15	21	16							91
Total Filed for Month	105	95	136	108	118	106							
Totals Filed Year-to-Date	105	200	336	444	562	668							668
CLOSED													CLOSED
Chapter 7 Combined Total	131	96	97	84	104	100							612
Asset	7	6	5	7	13	4							42
No Asset	124	90	92	77	91	96							570
Chapter 11	1	0	0	1	1	1							4
Chapter 12	0	0	0	0	0	0							0
Chapter 13	15	26	15	19	23	25							123
Totals Closed for Month	147	122	112	104	128	126							
Totals Closed Year-to-Date	147	269	381	485	613	739							739
Closing Breakdown													
Closed by Case Managers	30	42	38	40	49	40							239
Closed Automatically	117	80	74	64	79	86							500
Percent Closed by Case Managers	20.41%	34.43%	33.93%	38.46%	38.28%	31.75%							32.34%
Percent Closed Automatically	79.59%	65.57%	66.07%	61.54%	61.72%	68.25%							67.66%
PENDING													
Chapter 7	451	441	461	470	463	453							
Chapter 11	20	21	21	21	21	20							
Chapter 12	0	0	0	0	0	0							
Chapter 13	613	595	599	596	595	586							
Total Pending for Month	1084	1057	1081	1087	1079	1059							
Adversary Proceedings													AP
Filed	5	2	3	8	0	0							18
Closed	3	3	7	5	3	2							23
Total Adversaries Pending	45	45	41	44	41	39							

Monthly Bankruptcy Filings



Monthly Adversary Filings



United States Bankruptcy Court - District of New Mexico

Pro Se Filings

	Jan	Feb	Mar	Apr	May	Jun	Jul	Aug	Sep	Oct	Nov	Dec	YTD Total
2023	69	87	111	86	82	65	131	120	115	112	107	89	1,174
pro se 7	6	5	3	5	7	2	6	6	10	6	6	4	66
pro se 13	0	1	4	2	2	1	0	2	2	2	2	3	21
pro se with BPP	1	1	0	2	2	0	2	0	2	2	0	1	13
% Of Bankruptcies Filed	8.7%	6.9%	6.31%	8.14%	10.98%	4.62%	4.58%	6.67%	10.43%	7.14%	7.48%	7.87%	7.41%
2024	105	95	136	108	118	106							668
pro se 7	5	7	6	2	7	9							36
pro se 13	4	0	0	1	1	0							6
pro se with BPP	1	2	0	1	2	1							7
% Of Bankruptcies Filed	9.52%	7.37%	4.41%	2.78%	7.63%	8.49%							6.29%
	Jan	Feb	Mar	Apr	May	Jun	Jul	Aug	Sep	Oct	Nov	Dec	YTD Total