

United States Bankruptcy Court  
District of New Mexico

April 3, 2019  
CM/ECF Real Time Statistics  
**March 2019 Report**

Capsule View	Mar 2019	Feb 2019	Mar 2018	% Change	
	this month	last month	this month last year	from last month	from this month last year
Bankruptcies Filed					
Chapter 7	262	196	288	33.67%	-9.03%
Chapter 11	2	3	1	-33.33%	100%
Chapter 12	0	0	0	0%	0%
Chapter 13	37	34	39	8.82%	-5.13%
TOTAL BANKRUPTCY FILINGS	301	233	328	29.18%	-8.23%
Adversaries					
Adversaries Filed	19	16	8	18.75%	137.5%
YEAR-TO-DATE	2019(CY)	2018(LY)	% Change		
BANKRUPTCIES FILED <sup>2</sup>				CY - LY	
Chapter 7	652	734	-11.17%		
Chapter 11	5	2	150%		
Chapter 12	0	0	0%		
Chapter 13	98	86	13.95%		
<b><u>TOTAL FILINGS</u></b>	755	822	-8.15%		
BANKRUPTCIES PENDING <sup>(1)(2)</sup>					
Chapter 7	983	1,134	-13.32%		
Chapter 11	45	53	-15.09%		
Chapter 12	4	6	-33.33%		
Chapter 13	891	760	17.24%		
<b><u>TOTAL PENDING</u></b>	1,923	1,953	-1.54%		
ADVERSARY PROCEEDINGS					
Filed	40	18	122.22%		
<b><u>TOTAL PENDING<sup>1</sup></u></b>	105	122	-13.93%		
AVERAGES					
Chapter 7 Average Disposition <sup>3</sup> in Days	126	115	9.57%		
Chapter 13 Average Disposition <sup>3</sup> in Days	851	974	-12.63%		
Chapter 13 Average Days to Confirmation	132	132	0%		

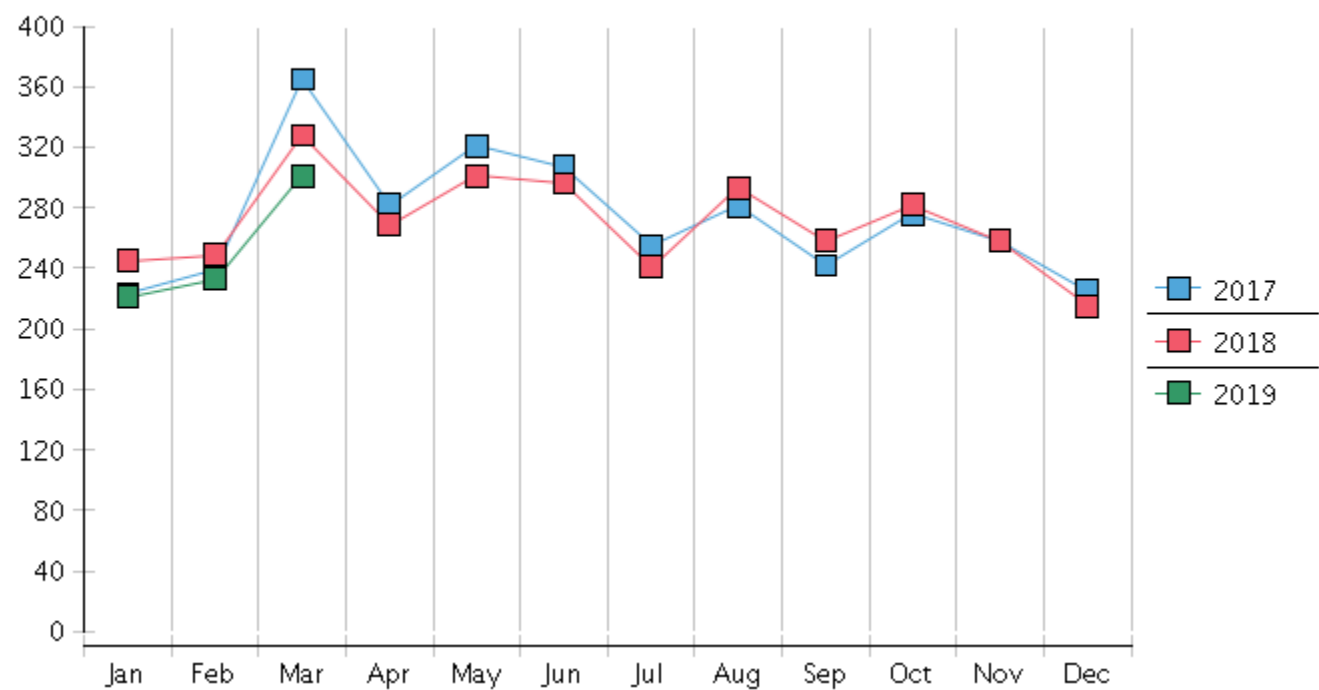
1 Pending totals are generated from CM/ECF on a time frame ending on the last day of the month.

2 Chapter breakdowns are pulled from the Dynamic CM/ECF Database and may change over time due to conversions or other case changes.

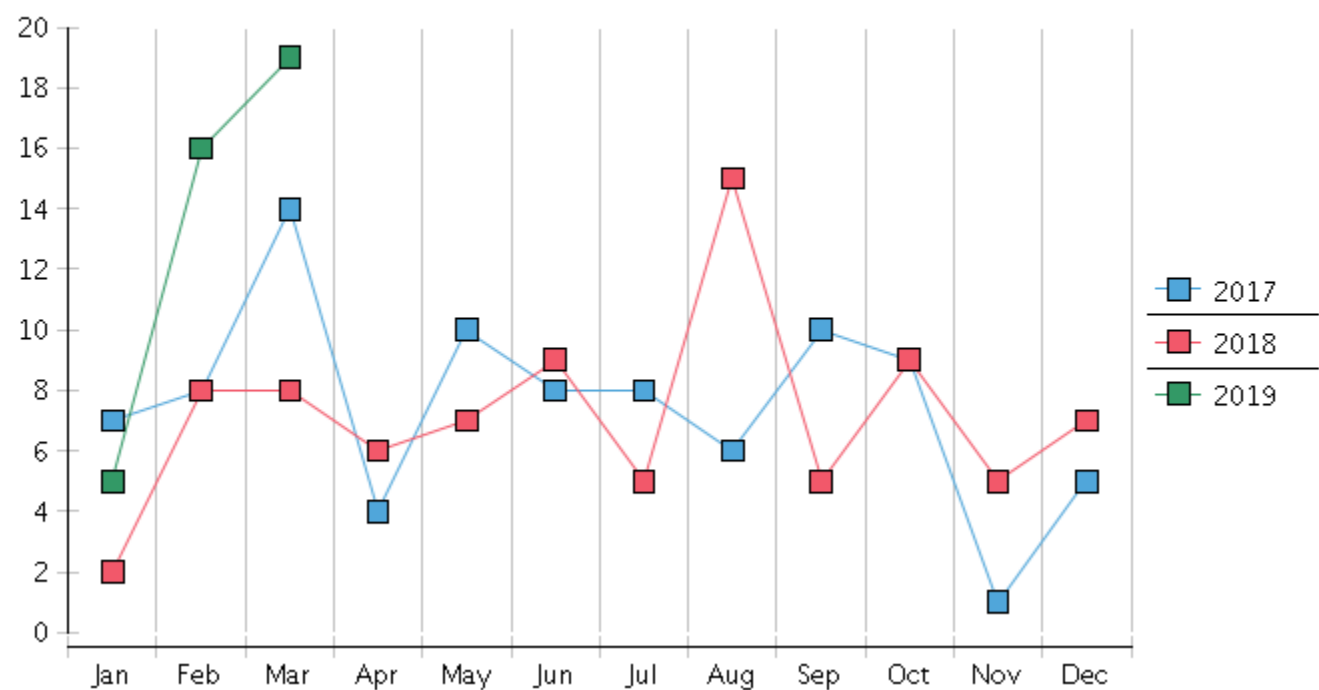
3. Average disposition represents number of days from filing to discharge/dismissal of case.

United States Bankruptcy Court - District of New Mexico  
Statistics - Year-To-Date Totals[illegible]

### Monthly Bankruptcy Filings



### Monthly Adversary Filings



United States Bankruptcy Court - District of New Mexico  
Pro Se Filings

	Jan	Feb	Mar	Apr	May	Jun	Jul	Aug	Sep	Oct	Nov	Dec	YTD Total
2018	245	249	328	269	301	296	241	293	258	282	258	215	3,235
pro se 7	22	20	22	20	38	29	32	29	19	21	20	25	297
pro se 13	2	2	5	1	1	2	2	4	3	4	2	2	30
pro se with BPP	16	11	16	14	29	15	23	19	12	8	10	16	189
% Of Bankruptcies Filed	9.8%	8.84%	8.23%	7.81%	12.96%	10.47%	14.11%	11.6%	8.53%	8.87%	8.53%	12.56%	10.11%
2019	221	233	301										755
pro se 7	27	18	23										68
pro se 13	4	8	7										19
pro se with BPP	19	10	14										43
% Of Bankruptcies Filed	14.03%	11.16%	9.97%										11.52%
	Jan	Feb	Mar	Apr	May	Jun	Jul	Aug	Sep	Oct	Nov	Dec	YTD Total