

United States Bankruptcy Court

District of New Mexico

April 1, 2021

CM/ECF Real Time Statistics

**March 2021 Report**

Capsule View	Mar 2021	Feb 2021	Mar 2020	% Change	
	this month	last month	this month last year	from last month	from this month last year
<b>Bankruptcies Filed</b>					
Chapter 7	140	117	230	19.66%	-39.13%
Chapter 11	0	1	2	-100%	-200%
Chapter 12	0	0	0	0%	0%
Chapter 13	11	11	25	0%	-56%
<b>TOTAL BANKRUPTCY FILINGS</b>	<b>151</b>	<b>129</b>	<b>257</b>	<b>17.05%</b>	<b>-41.25%</b>
<b>Adversaries</b>					
Adversaries Filed	5	5	8	0%	-37.5%
<b>YEAR-TO-DATE</b>					
	<b>2021(CY)</b>	<b>2020(LY)</b>	<b>% Change</b>		
<b>BANKRUPTCIES FILED<sup>2</sup></b>			<b>CY - LY</b>		
Chapter 7	363	649	-44.07%		
Chapter 11	1	3	-66.67%		
Chapter 12	0	0	0%		
Chapter 13	29	83	-65.06%		
<b>TOTAL FILINGS</b>	<b>393</b>	<b>735</b>	<b>-46.53%</b>		
<b>BANKRUPTCIES PENDING<sup>(1)(2)</sup></b>					
Chapter 7	606	973	-37.72%		
Chapter 11	31	32	-3.12%		
Chapter 12	3	3	0%		
Chapter 13	853	867	-1.61%		
<b>TOTAL PENDING</b>	<b>1,493</b>	<b>1,875</b>	<b>-20.37%</b>		
<b>ADVERSARY PROCEEDINGS</b>					
Filed	12	24	-50%		
<b>TOTAL PENDING<sup>1</sup></b>	<b>83</b>	<b>75</b>	<b>10.67%</b>		
<b>AVERAGES</b>					
Chapter 7 Average Disposition <sup>3</sup> in Days	125	124	0.81%		
Chapter 13 Average Disposition <sup>3</sup> in Days	1027	770	33.38%		
Chapter 13 Average Days to Confirmation	206	140	47.14%		

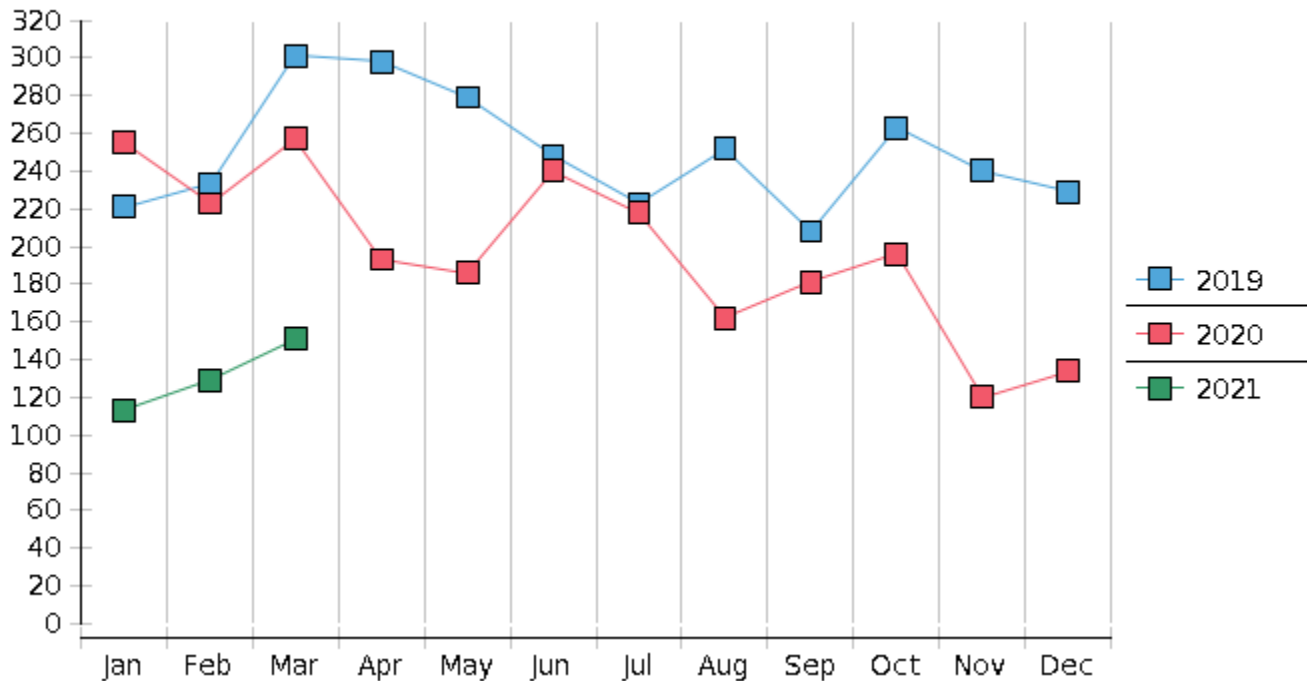
1 Pending totals are generated from CM/ECF on a time frame ending on the last day of the month.

2 Chapter breakdowns are pulled from the Dynamic CM/ECF Database and may change over time due to conversions or other case changes.

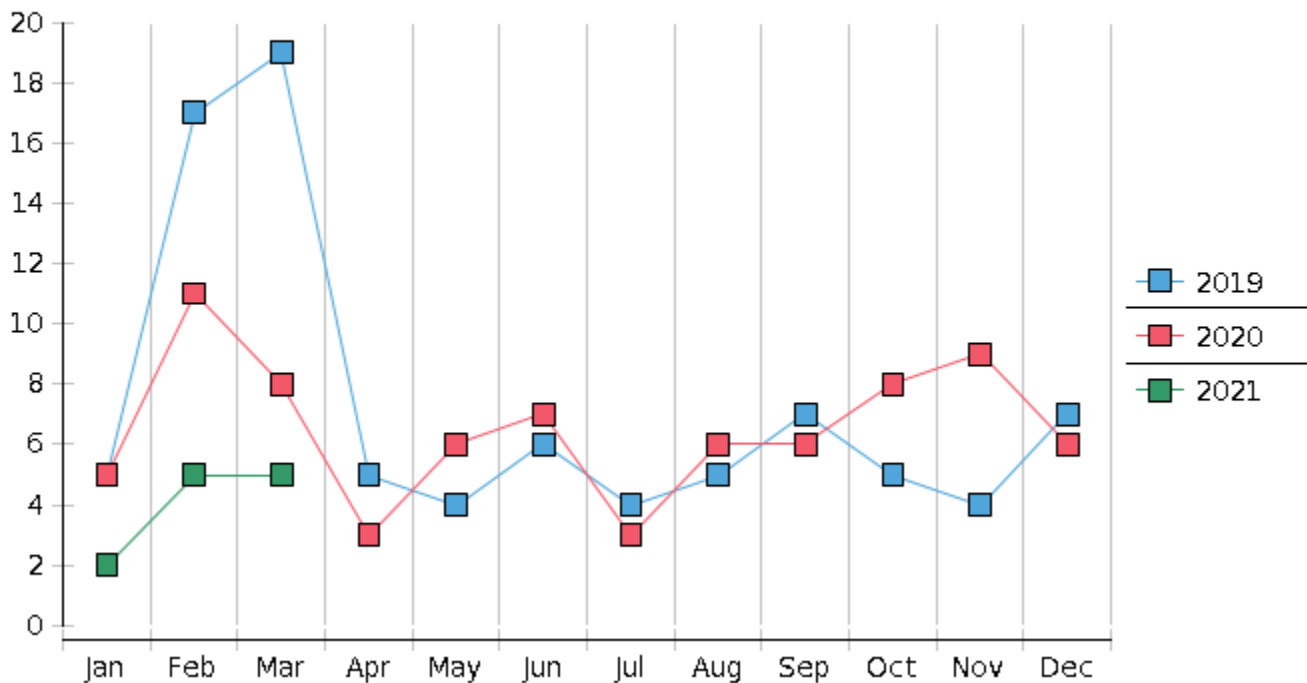
3. Average disposition represents number of days from filing to discharge/dismissal of case.



## Monthly Bankruptcy Filings



## Monthly Adversary Filings



United States Bankruptcy Court - District of New Mexico  
 Pro Se Filings

	Jan	Feb	Mar	Apr	May	Jun	Jul	Aug	Sep	Oct	Nov	Dec	YTD Total
2020	255	223	257	193	186	240	218	162	181	196	120	134	2,365
pro se 7	30	20	26	11	10	20	13	15	10	13	7	11	186
pro se 13	7	4	1	0	1	0	0	0	1	1	0	4	19
pro se with BPP	13	10	15	2	6	14	5	6	6	8	4	4	93
% Of Bankruptcies Filed	14.51%	10.76%	10.51%	5.7%	5.91%	8.33%	5.96%	9.26%	6.63%	7.14%	5.83%	11.19%	8.67%
2021	113	129	151										393
pro se 7	11	14	10										35
pro se 13	2	2	0										4
pro se with BPP	5	10	4										19
% Of Bankruptcies Filed	11.5%	12.4%	6.62%										9.92%
	Jan	Feb	Mar	Apr	May	Jun	Jul	Aug	Sep	Oct	Nov	Dec	YTD Total