

United States Bankruptcy Court
District of New Mexico

December 1, 2021
CM/ECF Real Time Statistics
November 2021 Report

Capsule View	Nov 2021	Oct 2021	Nov 2020	% Change	
	this month	last month	this month last year	from last month	from this month last year
Bankruptcies Filed					
Chapter 7	77	77	109	0%	-29.36%
Chapter 11	1	1	2	0%	-50%
Chapter 12	0	0	0	0%	0%
Chapter 13	17	11	9	54.55%	88.89%
TOTAL BANKRUPTCY FILINGS	95	89	120	6.74%	-20.83%
Adversaries					
Adversaries Filed	4	0	9	400%	-55.56%
YEAR-TO-DATE	2021(CY)		2020(LY)	% Change	
BANKRUPTCIES FILED ²				CY - LY	
Chapter 7	1,183		1,982	-40.31%	
Chapter 11	5		15	-66.67%	
Chapter 12	1		2	-50%	
Chapter 13	131		234	-44.02%	
<u>TOTAL FILINGS</u>	1,320		2,233	-40.89%	
BANKRUPTCIES PENDING ⁽¹⁾⁽²⁾					
Chapter 7	449		747	-39.89%	
Chapter 11	25		27	-7.41%	
Chapter 12	0		3	-300%	
Chapter 13	802		858	-6.53%	
<u>TOTAL PENDING</u>	1,276		1,635	-21.96%	
ADVERSARY PROCEEDINGS					
Filed	32		72	-55.56%	
<u>TOTAL PENDING¹</u>	48		85	-43.53%	
AVERAGES					
Chapter 7 Average Disposition ³ in Days	126		123	2.44%	
Chapter 13 Average Disposition ³ in Days	1172		983	19.23%	
Chapter 13 Average Days to Confirmation	192		141	36.17%	

1 Pending totals are generated from CM/ECF on a time frame ending on the last day of the month.

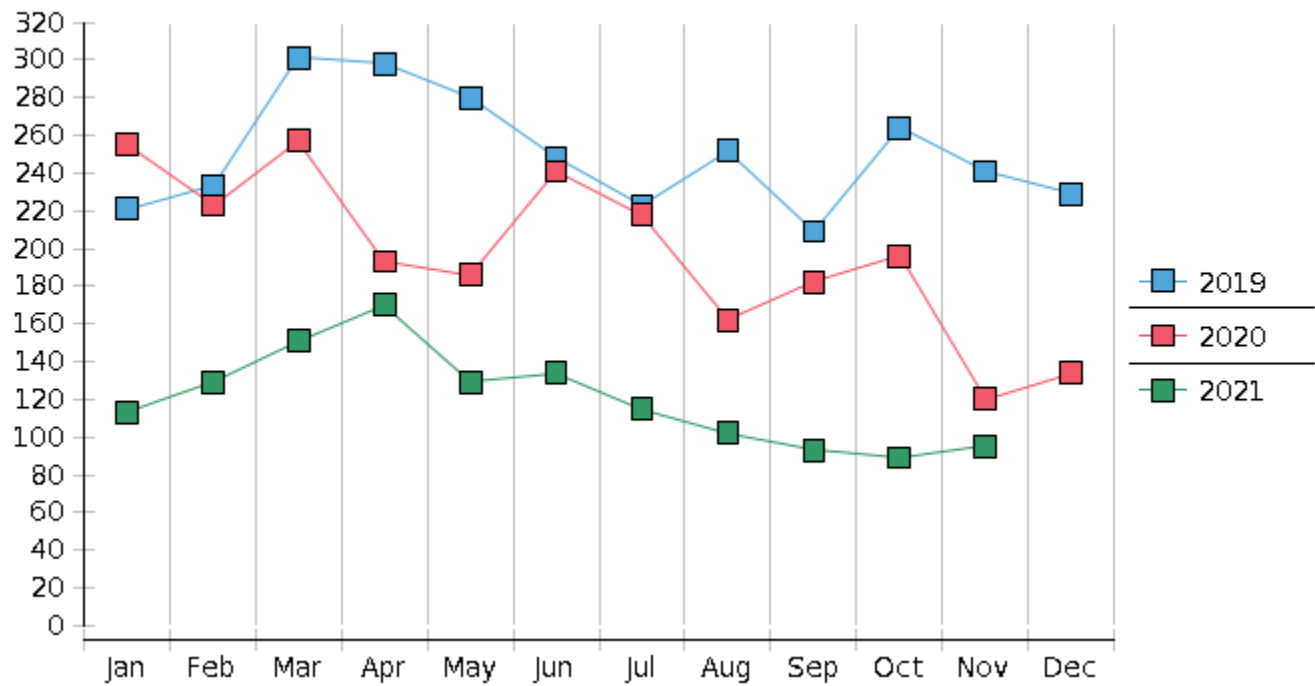
2 Chapter breakdowns are pulled from the Dynamic CM/ECF Database and may change over time due to conversions or other case changes.

3. Average disposition represents number of days from filing to discharge/dismissal of case.

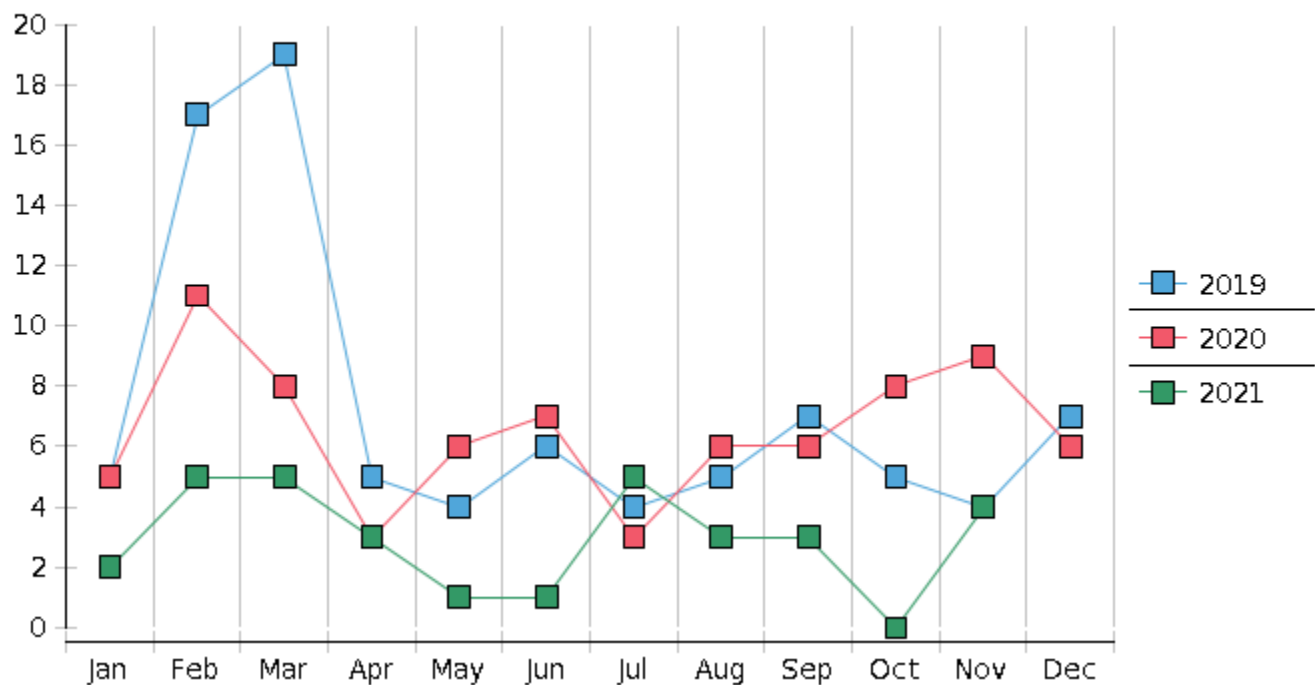
United States Bankruptcy Court - District of New Mexico
Statistics - Year-To-Date Totals

2021	January	February	March	April	May	June	July	August	September	October	November	December	Total YTD
FILED													FILED
Chapter 7 Combined	106	117	140	149	123	120	105	89	80	77	77		1183
Chapter 11	0	1	0	0	0	1	1	0	0	1	1		5
Chapter 12	0	0	0	1	0	0	0	0	0	0	0		1
Chapter 13	7	11	11	20	6	13	9	13	13	11	17		131
Total Filed for Month	113	129	151	170	129	134	115	102	93	89	95		
Totals Filed Year-to-Date	113	242	393	563	692	826	941	1043	1136	1225	1320		1320
CLOSED													CLOSED
Chapter 7 Combined Total	185	158	122	103	107	185	115	172	115	115	118		1495
Asset	1	3	6	6	2	8	5	4	8	3	4		50
No Asset	184	155	116	97	105	177	110	168	107	112	114		1445
Chapter 11	0	0	2	1	0	1	0	2	2	1	0		9
Chapter 12	0	0	0	1	1	0	1	0	0	0	1		4
Chapter 13	10	15	19	16	21	19	12	21	15	16	17		181
Totals Closed for Month	195	173	143	121	129	205	128	195	132	132	136		
Totals Closed Year-to-Date	195	368	511	632	761	966	1094	1289	1421	1553	1689		1689
Closing Breakdown													
Closed by Case Managers	39	26	45	37	33	41	36	42	41	36	30		406
Closed Automatically	156	147	98	84	96	164	92	153	91	96	106		1283
Percent Closed by Case Managers	20.0%	15.03%	31.47%	30.58%	25.58%	20.0%	28.13%	21.54%	31.06%	27.27%	22.06%		24.04%
Percent Closed Automatically	80.0%	84.97%	68.53%	69.42%	74.42%	80.0%	71.88%	78.46%	68.94%	72.73%	77.94%		75.96%
PENDING													
Chapter 7	649	609	629	676	699	638	628	551	522	487	449		
Chapter 11	27	28	26	25	25	26	28	26	24	24	25		
Chapter 12	3	3	3	3	2	2	1	1	1	1	0		
Chapter 13	848	845	837	842	826	820	817	808	806	802	802		
Total Pending for Month	1527	1485	1495	1546	1552	1486	1474	1386	1353	1314	1276		
Adversary Proceedings													AP
Filed	2	5	5	3	1	1	5	3	3	0	4		32
Closed	7	2	11	10	6	11	3	4	2	11	8		75
Total Adversaries Pending	84	88	83	76	71	61	63	62	63	52	48		

Monthly Bankruptcy Filings



Monthly Adversary Filings



United States Bankruptcy Court - District of New Mexico
Pro Se Filings

	Jan	Feb	Mar	Apr	May	Jun	Jul	Aug	Sep	Oct	Nov	Dec	YTD Total
2020	255	223	257	193	186	241	218	162	182	196	120	134	2,367
pro se 7	30	20	26	11	10	20	13	15	10	13	7	11	186
pro se 13	7	4	1	0	1	0	0	0	1	1	0	4	19
pro se with BPP	13	10	15	2	6	14	5	6	6	8	4	4	93
% Of Bankruptcies Filed	14.51%	10.76%	10.51%	5.7%	5.91%	8.3%	5.96%	9.26%	6.59%	7.14%	5.83%	11.19%	8.66%
2021	113	129	151	170	129	134	115	102	93	89	95		1,320
pro se 7	11	14	10	12	10	18	6	8	8	3	5		105
pro se 13	2	2	0	3	1	0	2	1	3	1	3		18
pro se with BPP	5	10	4	6	5	9	2	2	2	1	4		50
% Of Bankruptcies Filed	11.5%	12.4%	6.62%	8.82%	8.53%	13.43%	6.96%	8.82%	11.83%	4.49%	8.42%		9.32%
	Jan	Feb	Mar	Apr	May	Jun	Jul	Aug	Sep	Oct	Nov	Dec	YTD Total