

United States Bankruptcy Court  
District of New Mexico

October 3, 2022  
CM/ECF Real Time Statistics  
**September 2022 Report**

Capsule View	Sep 2022	Aug 2022	Sep 2021	% Change	
	this month	last month	this month last year	from last month	from this month last year
<b>Bankruptcies Filed</b>					
Chapter 7	75	77	80	-2.6%	-6.25%
Chapter 11	0	0	0	0%	0%
Chapter 12	0	0	0	0%	0%
Chapter 13	14	13	13	7.69%	7.69%
<b>TOTAL BANKRUPTCY FILINGS</b>	89	90	93	-1.11%	-4.3%
<b>Adversaries</b>					
Adversaries Filed	0	2	3	-200%	-300%
YEAR-TO-DATE	2022(CY)	2021(LY)	% Change		
<b>BANKRUPTCIES FILED<sup>2</sup></b>			<b>CY - LY</b>		
Chapter 7	681	1,029	-33.82%		
Chapter 11	3	3	0%		
Chapter 12	0	1	-100%		
Chapter 13	122	103	18.45%		
<b><u>TOTAL FILINGS</u></b>	806	1,136	-29.05%		
<b>BANKRUPTCIES PENDING<sup>(1)(2)</sup></b>					
Chapter 7	469	561	-16.4%		
Chapter 11	24	24	0%		
Chapter 12	1	1	0%		
Chapter 13	720	778	-7.46%		
<b><u>TOTAL PENDING</u></b>	1,214	1,364	-11%		
<b>ADVERSARY PROCEEDINGS</b>					
Filed	19	28	-32.14%		
<b><u>TOTAL PENDING<sup>1</sup></u></b>	37	63	-41.27%		
<b>AVERAGES</b>					
Chapter 7 Average Disposition <sup>3</sup> in Days	142	127	11.81%		
Chapter 13 Average Disposition <sup>3</sup> in Days	1207	1198	0.75%		
Chapter 13 Average Days to Confirmation	164	189	-13.23%		

1 Pending totals are generated from CM/ECF on a time frame ending on the last day of the month.

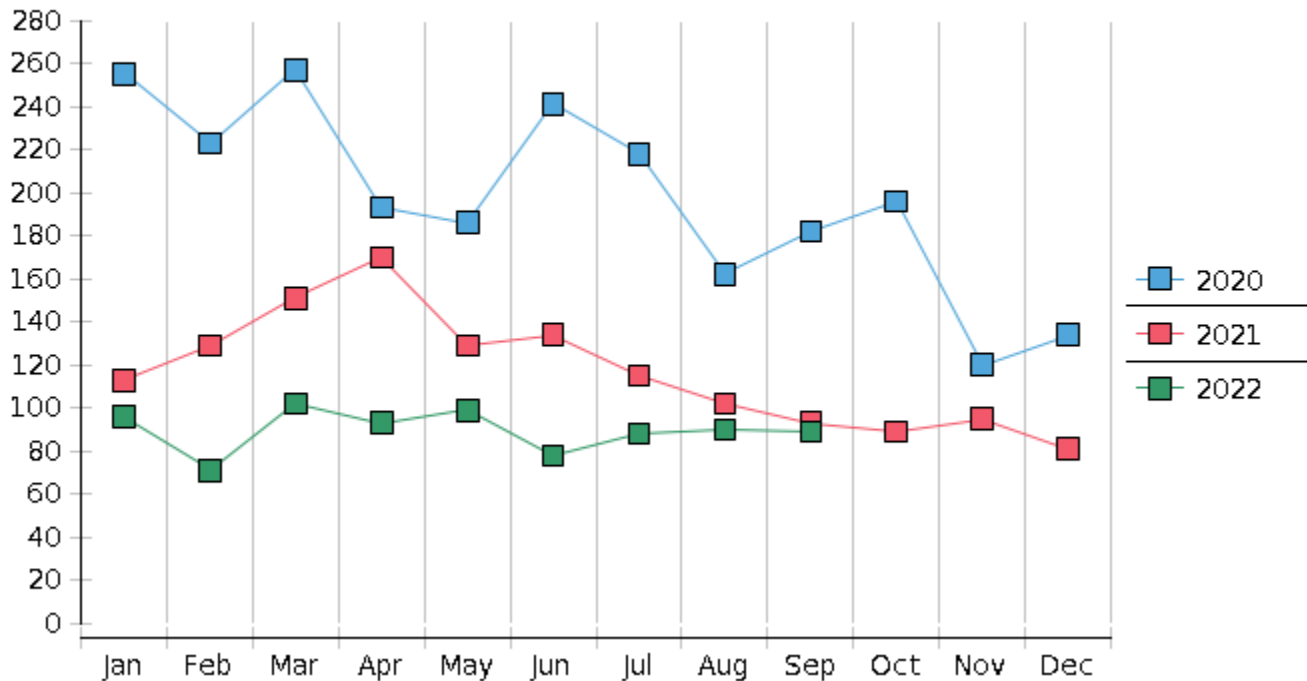
2 Chapter breakdowns are pulled from the Dynamic CM/ECF Database and may change over time due to conversions or other case changes.

3. Average disposition represents number of days from filing to discharge/dismissal of case.

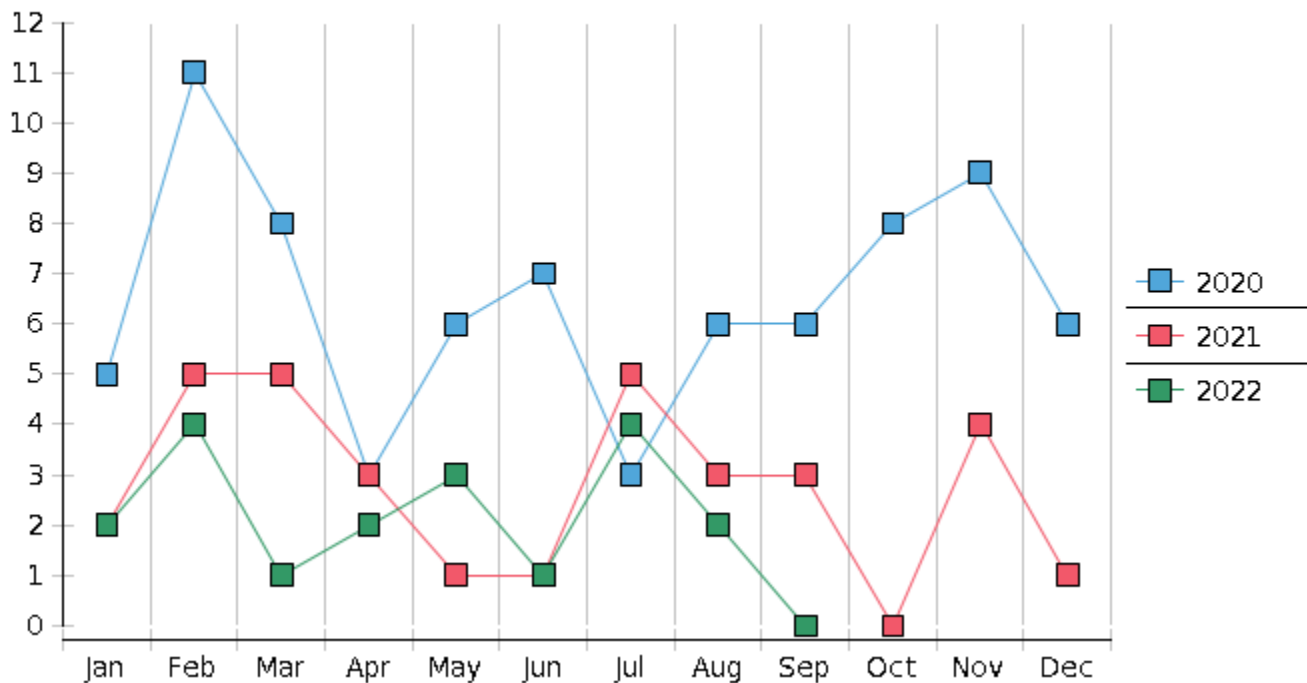
United States Bankruptcy Court - District of New Mexico  
 Statistics - Year-To-Date Totals

<b>2022</b>	January	February	March	April	May	June	July	August	September	October	November	December	<b>Total YTD</b>
<b>FILED</b>													<b>FILED</b>
Chapter 7 Combined	81	57	86	76	90	62	77	77	75				<b>681</b>
Chapter 11	1	0	1	0	0	0	1	0	0				<b>3</b>
Chapter 12	0	0	0	0	0	0	0	0	0				<b>0</b>
Chapter 13	14	14	15	17	9	16	10	13	14				<b>122</b>
Total Filed for Month	<b>96</b>	<b>71</b>	<b>102</b>	<b>93</b>	<b>99</b>	<b>78</b>	<b>88</b>	<b>90</b>	<b>89</b>				
Totals Filed Year-to-Date	<b>96</b>	<b>167</b>	<b>269</b>	<b>362</b>	<b>461</b>	<b>539</b>	<b>627</b>	<b>717</b>	<b>806</b>				<b>806</b>
<b>CLOSED</b>													<b>CLOSED</b>
Chapter 7 Combined Total	95	87	71	53	116	87	60	107	112				<b>788</b>
Asset	3	3	5	3	8	4	4	5	3				<b>38</b>
No Asset	92	84	66	50	108	83	56	102	109				<b>750</b>
Chapter 11	1	2	1	4	1	0	0	1	0				<b>10</b>
Chapter 12	0	0	0	0	0	0	0	0	0				<b>0</b>
Chapter 13	18	23	23	19	16	14	23	17	17				<b>170</b>
Totals Closed for Month	<b>114</b>	<b>112</b>	<b>95</b>	<b>76</b>	<b>133</b>	<b>101</b>	<b>83</b>	<b>125</b>	<b>129</b>				
Totals Closed Year-to-Date	<b>114</b>	<b>226</b>	<b>321</b>	<b>397</b>	<b>530</b>	<b>631</b>	<b>714</b>	<b>839</b>	<b>968</b>				<b>968</b>
<b>Closing Breakdown</b>													
Closed by Case Managers	32	35	41	39	41	39	33	53	38				<b>351</b>
Closed Automatically	82	77	54	37	92	62	50	72	91				<b>617</b>
Percent Closed by Case Managers	<b>28.07%</b>	<b>31.25%</b>	<b>43.16%</b>	<b>51.32%</b>	<b>30.83%</b>	<b>38.61%</b>	<b>39.76%</b>	<b>42.4%</b>	<b>29.46%</b>				<b>36.26%</b>
Percent Closed Automatically	<b>71.93%</b>	<b>68.75%</b>	<b>56.84%</b>	<b>48.68%</b>	<b>69.17%</b>	<b>61.39%</b>	<b>60.24%</b>	<b>57.6%</b>	<b>70.54%</b>				<b>63.74%</b>
<b>PENDING</b>													
Chapter 7	531	506	523	552	531	509	525	498	469				
Chapter 11	28	26	26	23	22	22	24	24	24				
Chapter 12	0	0	0	0	0	1	1	1	1				
Chapter 13	765	756	749	746	739	740	728	723	720				
Total Pending for Month	<b>1324</b>	<b>1288</b>	<b>1298</b>	<b>1321</b>	<b>1292</b>	<b>1272</b>	<b>1278</b>	<b>1246</b>	<b>1214</b>				
<b>Adversary Proceedings</b>													<b>AP</b>
Filed	2	4	1	2	3	1	4	2	0				<b>19</b>
Closed	2	1	0	5	3	8	5	2	3				<b>29</b>
Total Adversaries Pending	<b>46</b>	<b>50</b>	<b>51</b>	<b>48</b>	<b>48</b>	<b>41</b>	<b>40</b>	<b>40</b>	<b>37</b>				

## Monthly Bankruptcy Filings



## Monthly Adversary Filings



United States Bankruptcy Court - District of New Mexico  
Pro Se Filings

	Jan	Feb	Mar	Apr	May	Jun	Jul	Aug	Sep	Oct	Nov	Dec	YTD Total
2021	113	129	151	170	129	134	115	102	93	89	95	81	1,401
pro se 7	11	14	10	12	10	18	6	8	8	3	5	5	110
pro se 13	2	2	0	3	1	0	2	1	3	1	3	1	19
pro se with BPP	5	10	4	6	5	9	2	2	2	1	4	3	53
% Of Bankruptcies Filed	11.5%	12.4%	6.62%	8.82%	8.53%	13.43%	6.96%	8.82%	11.83%	4.49%	8.42%	7.41%	9.21%
2022	96	71	102	93	99	78	88	90	89				806
pro se 7	8	1	2	6	5	3	5	8	3				41
pro se 13	2	1	0	2	3	4	2	1	0				15
pro se with BPP	5	1	0	0	2	0	3	2	1				14
% Of Bankruptcies Filed	10.42%	2.82%	1.96%	8.6%	8.08%	8.97%	7.95%	10%	3.37%				6.95%
	Jan	Feb	Mar	Apr	May	Jun	Jul	Aug	Sep	Oct	Nov	Dec	YTD Total