

United States Bankruptcy Court

District of New Mexico

September 1, 2022

CM/ECF Real Time Statistics

August 2022 Report

Capsule View	Aug 2022	Jul 2022	Aug 2021	% Change	
	this month	last month	this month last year	from last month	from this month last year
Bankruptcies Filed					
Chapter 7	77	77	89	0%	-13.48%
Chapter 11	0	1	0	-100%	0%
Chapter 12	0	0	0	0%	0%
Chapter 13	13	10	13	30%	0%
TOTAL BANKRUPTCY FILINGS	90	88	102	2.27%	-11.76%
Adversaries					
Adversaries Filed	2	4	3	-50%	-33.33%
YEAR-TO-DATE					
	2022(CY)		2021(LY)	% Change	
BANKRUPTCIES FILED²				CY - LY	
Chapter 7	606		949	-36.14%	
Chapter 11	3		3	0%	
Chapter 12	0		1	-100%	
Chapter 13	108		90	20%	
<u>TOTAL FILINGS</u>	717		1,043	-31.26%	
BANKRUPTCIES PENDING⁽¹⁾⁽²⁾					
Chapter 7	493		585	-15.73%	
Chapter 11	23		26	-11.54%	
Chapter 12	1		1	0%	
Chapter 13	729		785	-7.13%	
<u>TOTAL PENDING</u>	1,246		1,397	-10.81%	
ADVERSARY PROCEEDINGS					
Filed	19		25	-24%	
<u>TOTAL PENDING¹</u>	40		62	-35.48%	
AVERAGES					
Chapter 7 Average Disposition ³ in Days	141		128	10.16%	
Chapter 13 Average Disposition ³ in Days	1229		1186	3.63%	
Chapter 13 Average Days to Confirmation	170		187	-9.09%	

1 Pending totals are generated from CM/ECF on a time frame ending on the last day of the month.

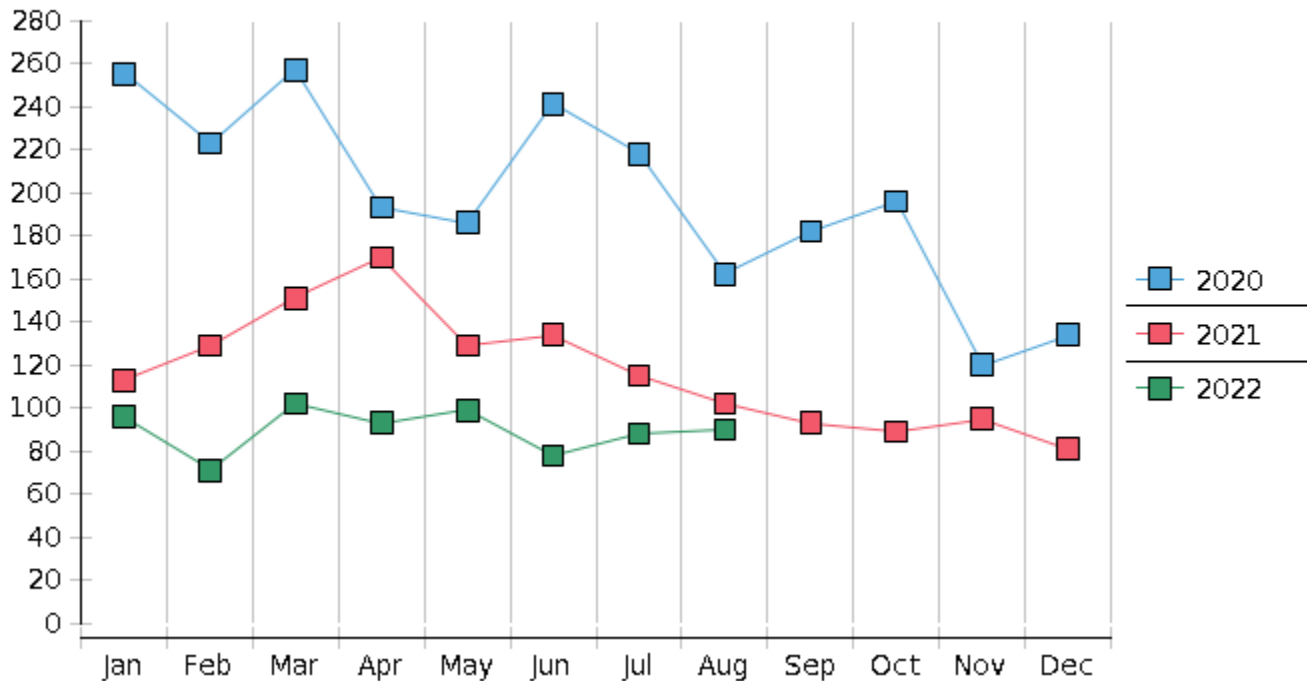
2 Chapter breakdowns are pulled from the Dynamic CM/ECF Database and may change over time due to conversions or other case changes.

3. Average disposition represents number of days from filing to discharge/dismissal of case.

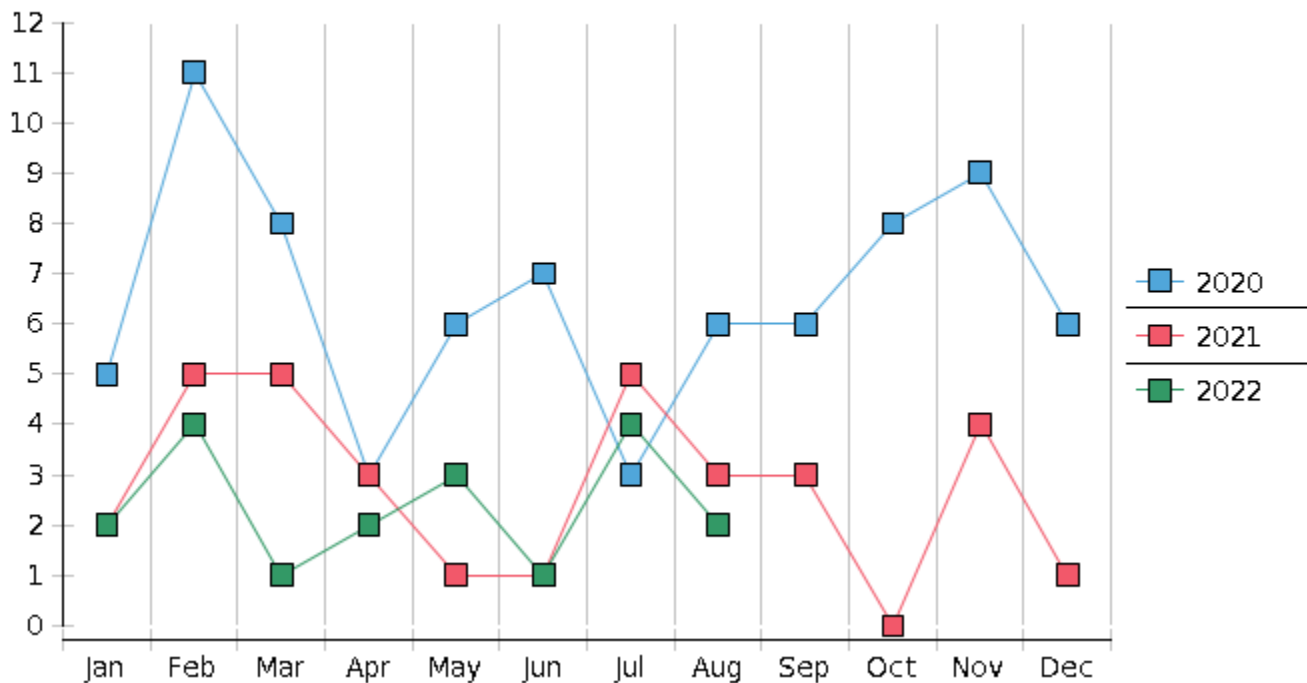
United States Bankruptcy Court - District of New Mexico
 Statistics - Year-To-Date Totals

2022	January	February	March	April	May	June	July	August	September	October	November	December	Total YTD
FILED													FILED
Chapter 7 Combined	81	57	86	76	90	62	77	77					606
Chapter 11	1	0	1	0	0	0	1	0					3
Chapter 12	0	0	0	0	0	0	0	0					0
Chapter 13	14	14	15	17	9	16	10	13					108
Total Filed for Month	96	71	102	93	99	78	88	90					
Totals Filed Year-to-Date	96	167	269	362	461	539	627	717					717
CLOSED													CLOSED
Chapter 7 Combined Total	95	87	71	53	116	87	60	107					676
Asset	3	3	5	3	8	4	4	5					35
No Asset	92	84	66	50	108	83	56	102					641
Chapter 11	1	2	1	4	1	0	0	1					10
Chapter 12	0	0	0	0	0	0	0	0					0
Chapter 13	18	23	23	19	16	14	23	17					153
Totals Closed for Month	114	112	95	76	133	101	83	125					
Totals Closed Year-to-Date	114	226	321	397	530	631	714	839					839
Closing Breakdown													
Closed by Case Managers	32	35	41	39	41	39	33	53					313
Closed Automatically	82	77	54	37	92	62	50	72					526
Percent Closed by Case Managers	28.07%	31.25%	43.16%	51.32%	30.83%	38.61%	39.76%	42.4%					37.31%
Percent Closed Automatically	71.93%	68.75%	56.84%	48.68%	69.17%	61.39%	60.24%	57.6%					62.69%
PENDING													
Chapter 7	526	501	518	547	526	503	520	493					
Chapter 11	28	26	26	23	22	22	24	23					
Chapter 12	0	0	0	0	0	1	1	1					
Chapter 13	770	761	754	751	744	746	733	729					
Total Pending for Month	1324	1288	1298	1321	1292	1272	1278	1246					
Adversary Proceedings													AP
Filed	2	4	1	2	3	1	4	2					19
Closed	2	1	0	5	3	8	5	2					26
Total Adversaries Pending	46	50	51	48	48	41	40	40					

Monthly Bankruptcy Filings



Monthly Adversary Filings



United States Bankruptcy Court - District of New Mexico
Pro Se Filings

	Jan	Feb	Mar	Apr	May	Jun	Jul	Aug	Sep	Oct	Nov	Dec	YTD Total
2021	113	129	151	170	129	134	115	102	93	89	95	81	1,401
pro se 7	11	14	10	12	10	18	6	8	8	3	5	5	110
pro se 13	2	2	0	3	1	0	2	1	3	1	3	1	19
pro se with BPP	5	10	4	6	5	9	2	2	2	1	4	3	53
% Of Bankruptcies Filed	11.5%	12.4%	6.62%	8.82%	8.53%	13.43%	6.96%	8.82%	11.83%	4.49%	8.42%	7.41%	9.21%
2022	96	71	102	93	99	78	88	90					717
pro se 7	8	1	2	6	5	3	5	8					38
pro se 13	2	1	0	2	3	4	2	1					15
pro se with BPP	5	1	0	0	2	0	3	2					13
% Of Bankruptcies Filed	10.42%	2.82%	1.96%	8.6%	8.08%	8.97%	7.95%	10%					7.39%
	Jan	Feb	Mar	Apr	May	Jun	Jul	Aug	Sep	Oct	Nov	Dec	YTD Total