

United States Bankruptcy Court
District of New Mexico

January 3, 2023
CM/ECF Real Time Statistics
December 2022 Report

Capsule View	Dec 2022	Nov 2022	Dec 2021	% Change	
	this month	last month	this month last year	from last month	from this month last year
Bankruptcies Filed					
Chapter 7	63	57	69	10.53%	-8.7%
Chapter 11	2	0	2	200%	0%
Chapter 12	0	0	0	0%	0%
Chapter 13	10	16	10	-37.5%	0%
TOTAL BANKRUPTCY FILINGS	75	73	81	2.74%	-7.41%
Adversaries					
Adversaries Filed	1	2	1	-50%	0%
YEAR-TO-DATE					
	2022(CY)		2021(LY)	% Change	
BANKRUPTCIES FILED²				CY - LY	
Chapter 7	874		1,252	-30.19%	
Chapter 11	5		7	-28.57%	
Chapter 12	0		1	-100%	
Chapter 13	157		141	11.35%	
<u>TOTAL FILINGS</u>	1,036		1,401	-26.05%	
BANKRUPTCIES PENDING⁽¹⁾⁽²⁾					
Chapter 7	430		548	-21.53%	
Chapter 11	24		27	-11.11%	
Chapter 12	0		0	0%	
Chapter 13	697		765	-8.89%	
<u>TOTAL PENDING</u>	1,151		1,340	-14.1%	
ADVERSARY PROCEEDINGS					
Filed	26		33	-21.21%	
<u>TOTAL PENDING¹</u>	39		46	-15.22%	
AVERAGES					
Chapter 7 Average Disposition ³ in Days	144		128	12.5%	
Chapter 13 Average Disposition ³ in Days	1244		1151	8.08%	
Chapter 13 Average Days to Confirmation	172		189	-8.99%	

1 Pending totals are generated from CM/ECF on a time frame ending on the last day of the month.

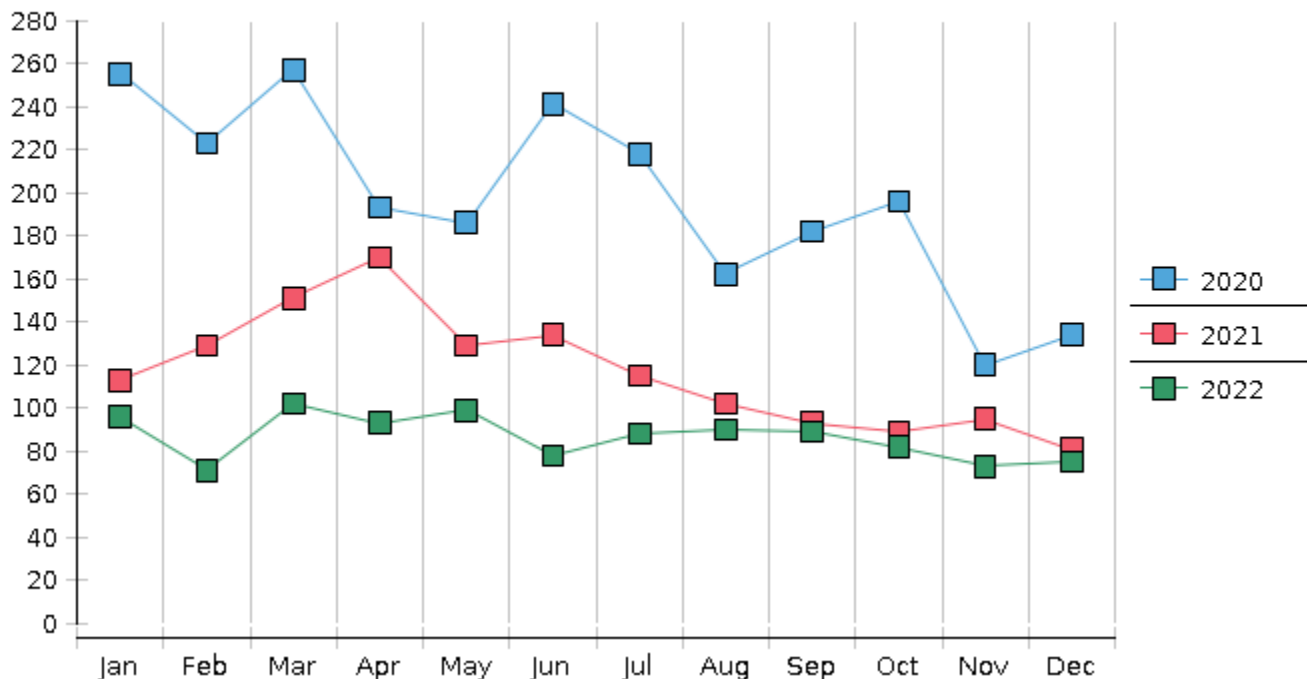
2 Chapter breakdowns are pulled from the Dynamic CM/ECF Database and may change over time due to conversions or other case changes.

3. Average disposition represents number of days from filing to discharge/dismissal of case.

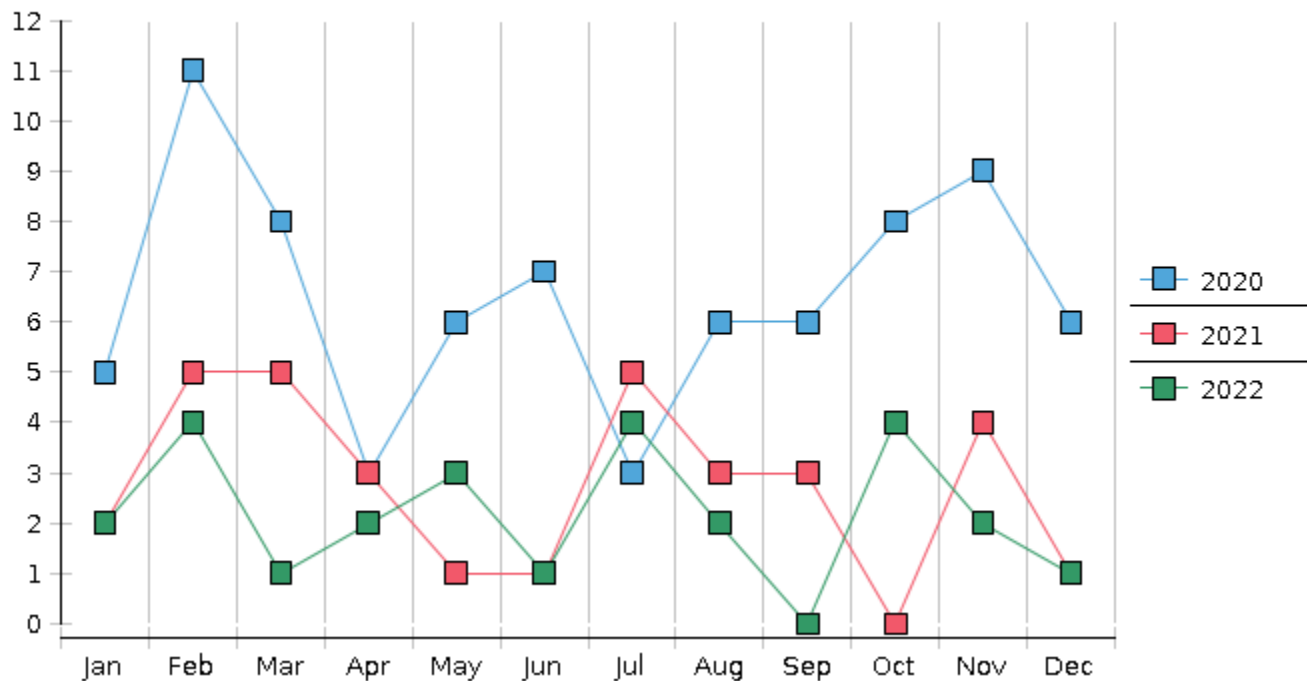
United States Bankruptcy Court - District of New Mexico
 Statistics - Year-To-Date Totals

2022	January	February	March	April	May	June	July	August	September	October	November	December	Total YTD
FILED													FILED
Chapter 7 Combined	81	57	86	76	90	62	77	77	75	73	57	63	874
Chapter 11	1	0	1	0	0	0	1	0	0	0	0	2	5
Chapter 12	0	0	0	0	0	0	0	0	0	0	0	0	0
Chapter 13	14	14	15	17	9	16	10	13	14	9	16	10	157
Total Filed for Month	96	71	102	93	99	78	88	90	89	82	73	75	
Totals Filed Year-to-Date	96	167	269	362	461	539	627	717	806	888	961	1036	1036
CLOSED													CLOSED
Chapter 7 Combined Total	95	87	71	53	116	87	60	107	112	111	45	89	1033
Asset	3	3	5	3	8	4	4	5	3	3	6	3	50
No Asset	92	84	66	50	108	83	56	102	109	108	39	86	983
Chapter 11	1	2	1	4	1	0	0	1	0	0	0	2	12
Chapter 12	0	0	0	0	0	0	0	0	0	0	0	1	1
Chapter 13	18	23	23	19	16	14	23	17	17	14	19	15	218
Totals Closed for Month	114	112	95	76	133	101	83	125	129	125	64	107	
Totals Closed Year-to-Date	114	226	321	397	530	631	714	839	968	1093	1157	1264	1264
Closing Breakdown													
Closed by Case Managers	32	35	41	39	41	39	33	53	38	27	33	34	445
Closed Automatically	82	77	54	37	92	62	50	72	91	98	31	73	819
Percent Closed by Case Managers	28.07%	31.25%	43.16%	51.32%	30.83%	38.61%	39.76%	42.4%	29.46%	21.6%	51.56%	31.78%	35.21%
Percent Closed Automatically	71.93%	68.75%	56.84%	48.68%	69.17%	61.39%	60.24%	57.6%	70.54%	78.4%	48.44%	68.22%	64.79%
PENDING													
Chapter 7	540	515	532	561	540	518	534	507	478	440	454	430	
Chapter 11	28	26	26	23	22	22	24	24	24	24	24	24	
Chapter 12	0	0	0	0	0	1	1	1	1	1	1	0	
Chapter 13	757	748	741	738	731	732	720	715	712	707	703	697	
Total Pending for Month	1325	1289	1299	1322	1293	1273	1279	1247	1215	1172	1182	1151	
Adversary Proceedings													AP
Filed	2	4	1	2	3	1	4	2	0	4	2	1	26
Closed	2	1	0	5	3	8	5	2	3	0	1	4	34
Total Adversaries Pending	46	50	51	48	48	41	40	40	37	41	42	39	

Monthly Bankruptcy Filings



Monthly Adversary Filings



United States Bankruptcy Court - District of New Mexico
Pro Se Filings

	Jan	Feb	Mar	Apr	May	Jun	Jul	Aug	Sep	Oct	Nov	Dec	YTD Total
2021	113	129	151	170	129	134	115	102	93	89	95	81	1,401
pro se 7	11	14	10	12	10	18	6	8	8	3	5	5	110
pro se 13	2	2	0	3	1	0	2	1	3	1	3	1	19
pro se with BPP	5	10	4	6	5	9	2	2	2	1	4	3	53
% Of Bankruptcies Filed	11.5%	12.4%	6.62%	8.82%	8.53%	13.43%	6.96%	8.82%	11.83%	4.49%	8.42%	7.41%	9.21%
2022	96	71	102	93	99	78	88	90	89	82	73	75	1,036
pro se 7	8	1	2	6	5	3	5	8	3	5	3	10	59
pro se 13	2	1	0	2	3	4	2	1	0	0	3	2	20
pro se with BPP	5	1	0	0	2	0	3	3	1	2	0	1	18
% Of Bankruptcies Filed	10.42%	2.82%	1.96%	8.6%	8.08%	8.97%	7.95%	10%	3.37%	6.1%	8.22%	16%	7.63%
	Jan	Feb	Mar	Apr	May	Jun	Jul	Aug	Sep	Oct	Nov	Dec	YTD Total