

United States Bankruptcy Court
District of New Mexico

January 2, 2026
CM/ECF Real Time Statistics
December 2025 Report

Capsule View	Dec 2025	Nov 2025	Dec 2024	% Change	
	this month	last month	this month last year	from last month	from this month last year
Bankruptcies Filed					
Chapter 7	104	126	108	-17.46%	-3.7%
Chapter 11	0	0	0	0%	0%
Chapter 12	0	0	0	0%	0%
Chapter 13	17	12	13	41.67%	30.77%
TOTAL BANKRUPTCY FILINGS	121	138	121	-12.32%	0%
Adversaries					
Adversaries Filed	3	1	0	200%	300%
YEAR-TO-DATE	2025(CY)	2024(LY)		% Change	
BANKRUPTCIES FILED ²				CY - LY	
Chapter 7	1,411	1,203		17.29%	
Chapter 11	9	7		28.57%	
Chapter 12	0	1		-100%	
Chapter 13	214	193		10.88%	
<u>TOTAL FILINGS</u>	1,634	1,404		16.38%	
BANKRUPTCIES PENDING ⁽¹⁾⁽²⁾					
Chapter 7	514	463		11.02%	
Chapter 11	8	15		-46.67%	
Chapter 12	2	1		100%	
Chapter 13	517	544		-4.96%	
<u>TOTAL PENDING</u>	1,041	1,023		1.76%	
ADVERSARY PROCEEDINGS					
Filed	45	30		50%	
<u>TOTAL PENDING¹</u>	51	31		64.52%	
AVERAGES					
Chapter 7 Average Disposition ³ in Days	119	125		-4.8%	
Chapter 13 Average Disposition ³ in Days	1130	1243		-9.09%	
Chapter 13 Average Days to Confirmation	175	159		10.06%	

1 Pending totals are generated from CM/ECF on a time frame ending on the last day of the month.

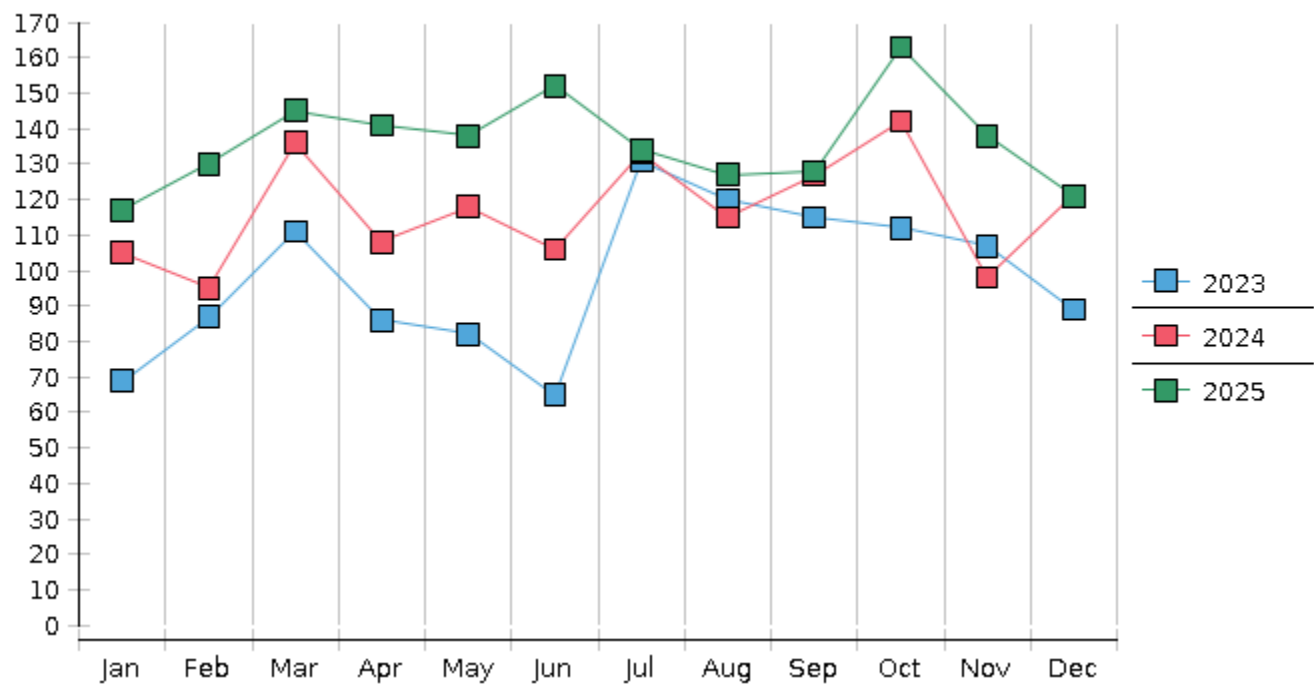
2 Chapter breakdowns are pulled from the Dynamic CM/ECF Database and may change over time due to conversions or other case changes.

3. Average disposition represents number of days from filing to discharge/dismissal of case.

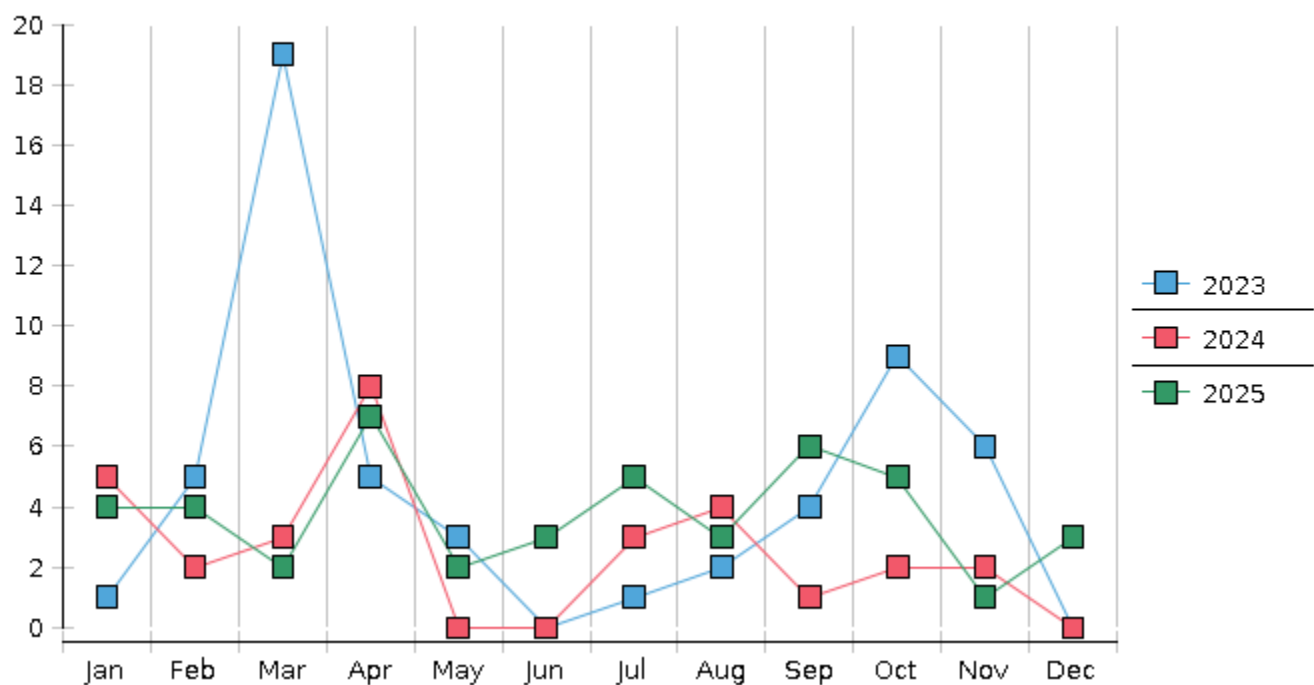
United States Bankruptcy Court - District of New Mexico
Statistics - Year-To-Date Totals

2025	January	February	March	April	May	June	July	August	September	October	November	December	Total YTD
FILED													FILED
Chapter 7 Combined	99	117	130	118	121	129	111	107	117	132	126	104	1411
Chapter 11	1	1	0	1	0	1	1	1	0	3	0	0	9
Chapter 12	0	0	0	0	0	0	0	0	0	0	0	0	0
Chapter 13	17	12	15	22	17	22	22	19	11	28	12	17	214
Total Filed for Month	117	130	145	141	138	152	134	127	128	163	138	121	
Totals Filed Year-to-Date	117	247	392	533	671	823	957	1084	1212	1375	1513	1634	1634
CLOSED													CLOSED
Chapter 7 Combined Total	126	98	104	69	107	169	112	119	165	106	105	109	1389
Asset	0	1	0	1	2	2	4	2	2	0	0	3	17
No Asset	126	97	104	68	105	167	108	117	163	106	105	106	1372
Chapter 11	1	0	1	4	1	1	1	3	4	3	0	0	19
Chapter 12	0	0	0	0	0	0	0	0	0	0	0	0	0
Chapter 13	15	32	18	14	25	21	15	19	27	22	10	17	235
Totals Closed for Month	142	130	123	87	133	191	128	141	196	131	115	126	
Totals Closed Year-to-Date	142	272	395	482	615	806	934	1075	1271	1402	1517	1643	1643
Closing Breakdown													
Closed by Case Managers	34	45	29	32	41	38	29	40	44	52	19	26	429
Closed Automatically	108	85	94	55	92	153	99	101	152	79	96	100	1214
Percent Closed by Case Managers	23.94%	34.62%	23.58%	36.78%	30.83%	19.9%	22.66%	28.37%	22.45%	39.69%	16.52%	20.63%	26.11%
Percent Closed Automatically	76.06%	65.38%	76.42%	63.22%	69.17%	80.1%	77.34%	71.63%	77.55%	60.31%	83.48%	79.37%	73.89%
PENDING													
Chapter 7	440	463	493	544	557	518	520	510	463	492	515	514	
Chapter 11	15	16	16	15	14	14	14	12	8	8	8	8	
Chapter 12	1	1	1	2	2	2	2	2	2	2	2	2	
Chapter 13	544	523	519	526	519	520	526	526	510	516	517	517	
Total Pending for Month	1000	1003	1029	1087	1092	1054	1062	1050	983	1018	1042	1041	
Adversary Proceedings													AP
Filed	4	4	2	7	2	3	5	3	6	5	1	3	45
Closed	3	5	2	1	2	2	2	0	1	2	2	3	25
Total Adversaries Pending	32	31	31	37	37	38	41	44	49	52	51	51	

Monthly Bankruptcy Filings



Monthly Adversary Filings



United States Bankruptcy Court - District of New Mexico
Pro Se Filings

	Jan	Feb	Mar	Apr	May	Jun	Jul	Aug	Sep	Oct	Nov	Dec	YTD Total
2024	105	95	136	108	118	106	133	115	127	142	98	121	1,404
pro se 7	5	7	6	2	7	9	5	8	6	7	7	6	75
pro se 13	4	0	0	1	1	0	5	2	4	2	1	2	22
pro se with BPP	1	2	0	1	2	1	2	1	1	2	0	0	13
% Of Bankruptcies Filed	9.52%	7.37%	4.41%	2.78%	7.63%	8.49%	7.52%	8.7%	7.87%	6.34%	8.16%	6.61%	6.91%
2025	117	130	145	141	138	152	134	127	128	163	138	121	1,634
pro se 7	8	6	5	6	11	11	7	7	9	10	9	9	98
pro se 13	1	3	3	1	5	3	4	5	0	5	2	2	34
pro se with BPP	1	2	2	1	3	3	2	1	0	3	2	0	20
% Of Bankruptcies Filed	7.69%	6.92%	5.52%	5.67%	11.59%	9.21%	8.21%	10.24%	7.03%	9.82%	7.97%	9.09%	8.08%
	Jan	Feb	Mar	Apr	May	Jun	Jul	Aug	Sep	Oct	Nov	Dec	YTD Total