

United States Bankruptcy Court
District of New Mexico

February 1, 2023
CM/ECF Real Time Statistics
January 2023 Report

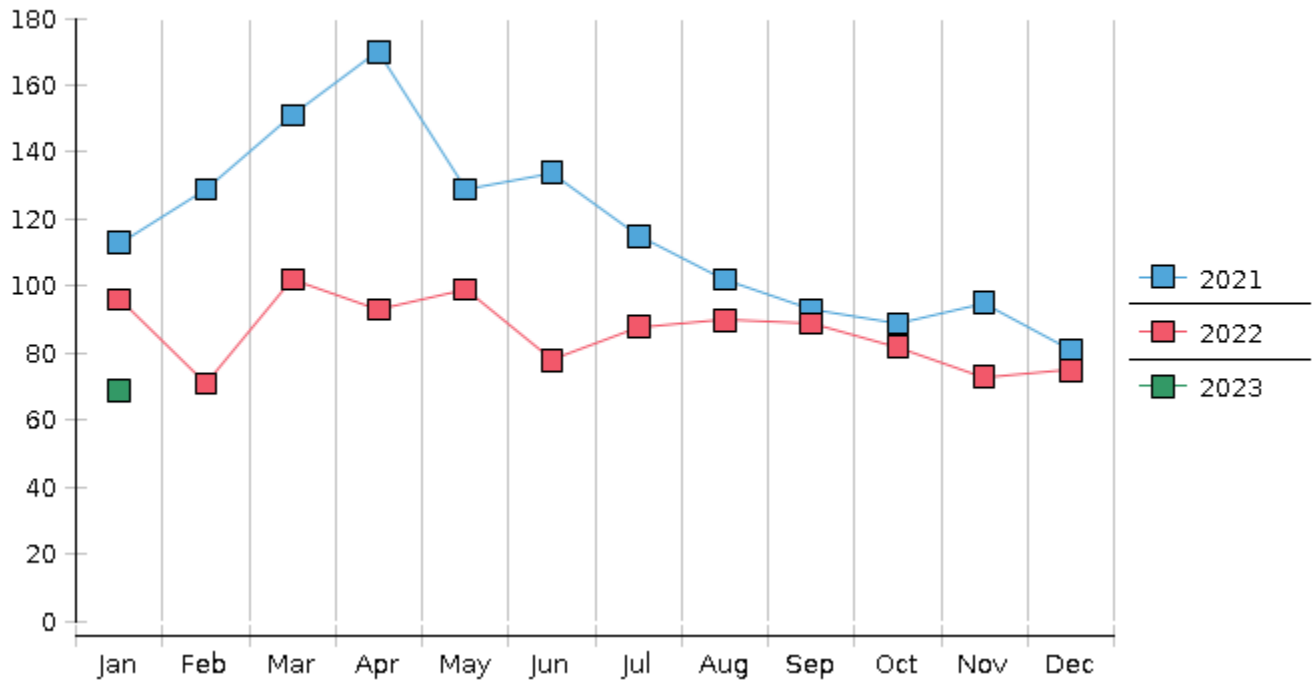
Capsule View	Jan 2023	Dec 2022	Jan 2022	% Change	
	this month	last month	this month last year	from last month	from this month last year
Bankruptcies Filed					
Chapter 7	55	63	81	-12.7%	-32.1%
Chapter 11	0	2	1	-200%	-100%
Chapter 12	0	0	0	0%	0%
Chapter 13	14	10	14	40%	0%
TOTAL BANKRUPTCY FILINGS	69	75	96	-8%	-28.12%
Adversaries					
Adversaries Filed	1	1	2	0%	-50%
YEAR-TO-DATE	2023(CY)	2022(LY)	% Change		
BANKRUPTCIES FILED ²				CY - LY	
Chapter 7	55	81	-32.1%		
Chapter 11	0	1	-100%		
Chapter 12	0	0	0%		
Chapter 13	14	14	0%		
TOTAL FILINGS	69	96	-28.12%		
BANKRUPTCIES PENDING⁽¹⁾⁽²⁾					
Chapter 7	396	543	-27.07%		
Chapter 11	21	28	-25%		
Chapter 12	0	0	0%		
Chapter 13	683	754	-9.42%		
TOTAL PENDING	1,100	1,325	-16.98%		
ADVERSARY PROCEEDINGS					
Filed	1	2	-50%		
TOTAL PENDING¹	39	46	-15.22%		
AVERAGES					
Chapter 7 Average Disposition ³ in Days	176	120	46.67%		
Chapter 13 Average Disposition ³ in Days	1049	1238	-15.27%		
Chapter 13 Average Days to Confirmation	121	180	-32.78%		

1 Pending totals are generated from CM/ECF on a time frame ending on the last day of the month.

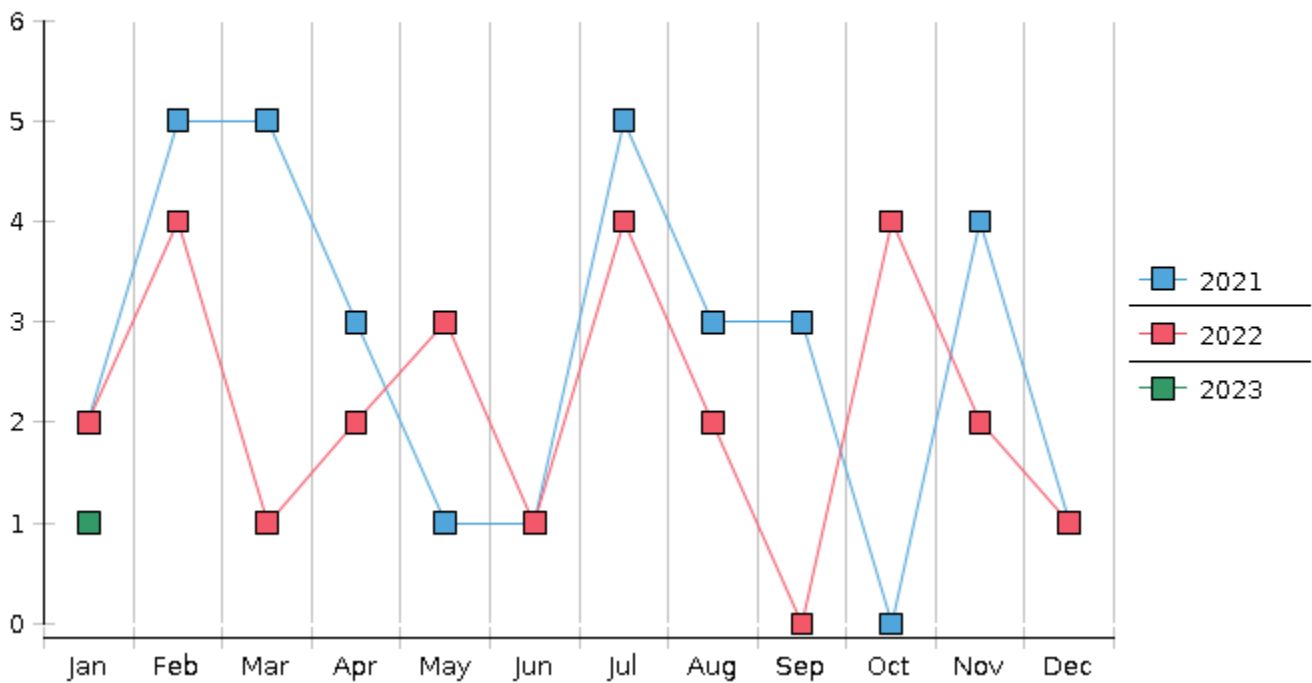
2 Chapter breakdowns are pulled from the Dynamic CM/ECF Database and may change over time due to conversions or other case changes.

3. Average disposition represents number of days from filing to discharge/dismissal of case.

Monthly Bankruptcy Filings



Monthly Adversary Filings



United States Bankruptcy Court - District of New Mexico

Pro Se Filings

	Jan	Feb	Mar	Apr	May	Jun	Jul	Aug	Sep	Oct	Nov	Dec	YTD Total
2022	96	71	102	93	99	78	88	90	89	82	73	75	1,036
pro se 7	8	1	2	6	5	3	5	8	3	5	3	10	59
pro se 13	2	1	0	2	3	4	2	1	0	0	3	2	20
pro se with BPP	5	1	0	0	2	0	3	3	1	2	0	1	18
% Of Bankruptcies Filed	10.42%	2.82%	1.96%	8.6%	8.08%	8.97%	7.95%	10%	3.37%	6.1%	8.22%	16%	7.63%
2023	69												69
pro se 7	6												6
pro se 13	0												0
pro se with BPP	1												1
% Of Bankruptcies Filed	8.7%												8.7%
	Jan	Feb	Mar	Apr	May	Jun	Jul	Aug	Sep	Oct	Nov	Dec	YTD Total