

United States Bankruptcy Court  
District of New Mexico

February 1, 2022  
CM/ECF Real Time Statistics  
**January 2022 Report**

Capsule View	Jan 2022	Dec 2021	Jan 2021	% Change	
	this month	last month	this month last year	from last month	from this month last year
<b>Bankruptcies Filed</b>					
Chapter 7	81	69	106	17.39%	-23.58%
Chapter 11	1	2	0	-50%	100%
Chapter 12	0	0	0	0%	0%
Chapter 13	14	10	7	40%	100%
<b>TOTAL BANKRUPTCY FILINGS</b>	96	81	113	18.52%	-15.04%
<b>Adversaries</b>					
Adversaries Filed	2	1	2	100%	0%
YEAR-TO-DATE	2022(CY)	2021(LY)	% Change		
<b>BANKRUPTCIES FILED<sup>2</sup></b>			<b>CY - LY</b>		
Chapter 7	81	106	-23.58%		
Chapter 11	1	0	100%		
Chapter 12	0	0	0%		
Chapter 13	14	7	100%		
<b><u>TOTAL FILINGS</u></b>	96	113	-15.04%		
<b>BANKRUPTCIES PENDING<sup>(1)(2)</sup></b>					
Chapter 7	431	652	-33.9%		
Chapter 11	28	27	3.7%		
Chapter 12	0	3	-300%		
Chapter 13	794	846	-6.15%		
<b><u>TOTAL PENDING</u></b>	1,253	1,528	-18%		
<b>ADVERSARY PROCEEDINGS</b>					
Filed	2	2	0%		
<b><u>TOTAL PENDING<sup>1</sup></u></b>	46	84	-45.24%		
<b>AVERAGES</b>					
Chapter 7 Average Disposition <sup>3</sup> in Days	120	126	-4.76%		
Chapter 13 Average Disposition <sup>3</sup> in Days	1222	864	41.44%		
Chapter 13 Average Days to Confirmation	178	187	-4.81%		

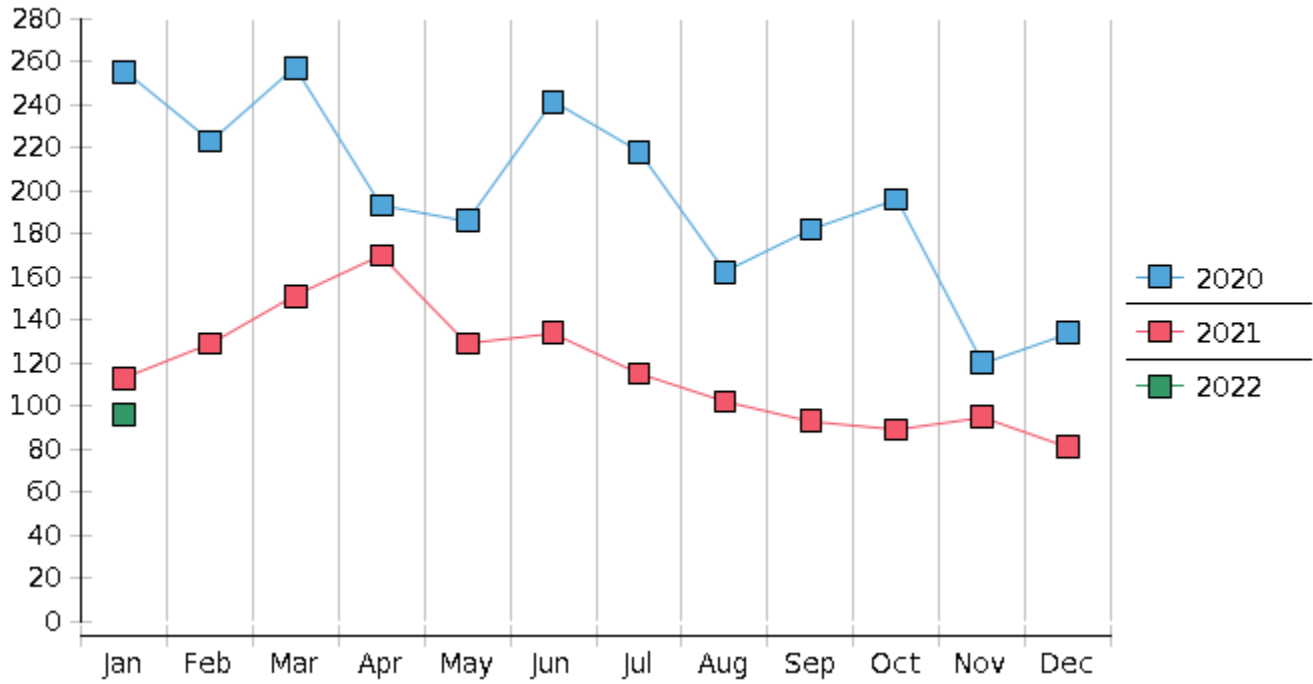
1 Pending totals are generated from CM/ECF on a time frame ending on the last day of the month.

2 Chapter breakdowns are pulled from the Dynamic CM/ECF Database and may change over time due to conversions or other case changes.

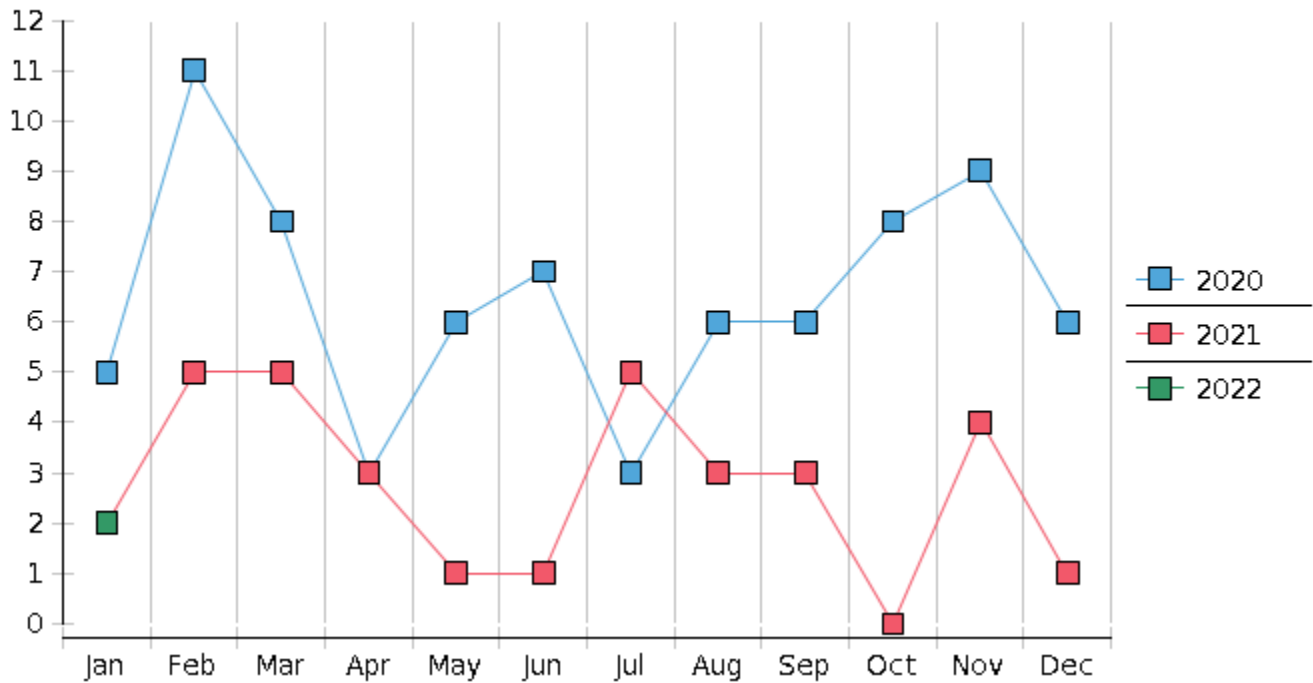
3. Average disposition represents number of days from filing to discharge/dismissal of case.



### Monthly Bankruptcy Filings



### Monthly Adversary Filings



United States Bankruptcy Court - District of New Mexico  
 Pro Se Filings

	Jan	Feb	Mar	Apr	May	Jun	Jul	Aug	Sep	Oct	Nov	Dec	YTD Total
2021	113	129	151	170	129	134	115	102	93	89	95	81	1,401
pro se 7	11	14	10	12	10	18	6	8	8	3	5	5	110
pro se 13	2	2	0	3	1	0	2	1	3	1	3	1	19
pro se with BPP	5	10	4	6	5	9	2	2	2	1	4	3	53
% Of Bankruptcies Filed	11.5%	12.4%	6.62%	8.82%	8.53%	13.43%	6.96%	8.82%	11.83%	4.49%	8.42%	7.41%	9.21%
2022	96												96
pro se 7	8												8
pro se 13	2												2
pro se with BPP	5												5
% Of Bankruptcies Filed	10.42%												10.42%
	Jan	Feb	Mar	Apr	May	Jun	Jul	Aug	Sep	Oct	Nov	Dec	YTD Total