

United States Bankruptcy Court
District of New Mexico

February 1, 2024
CM/ECF Real Time Statistics
January 2024 Report

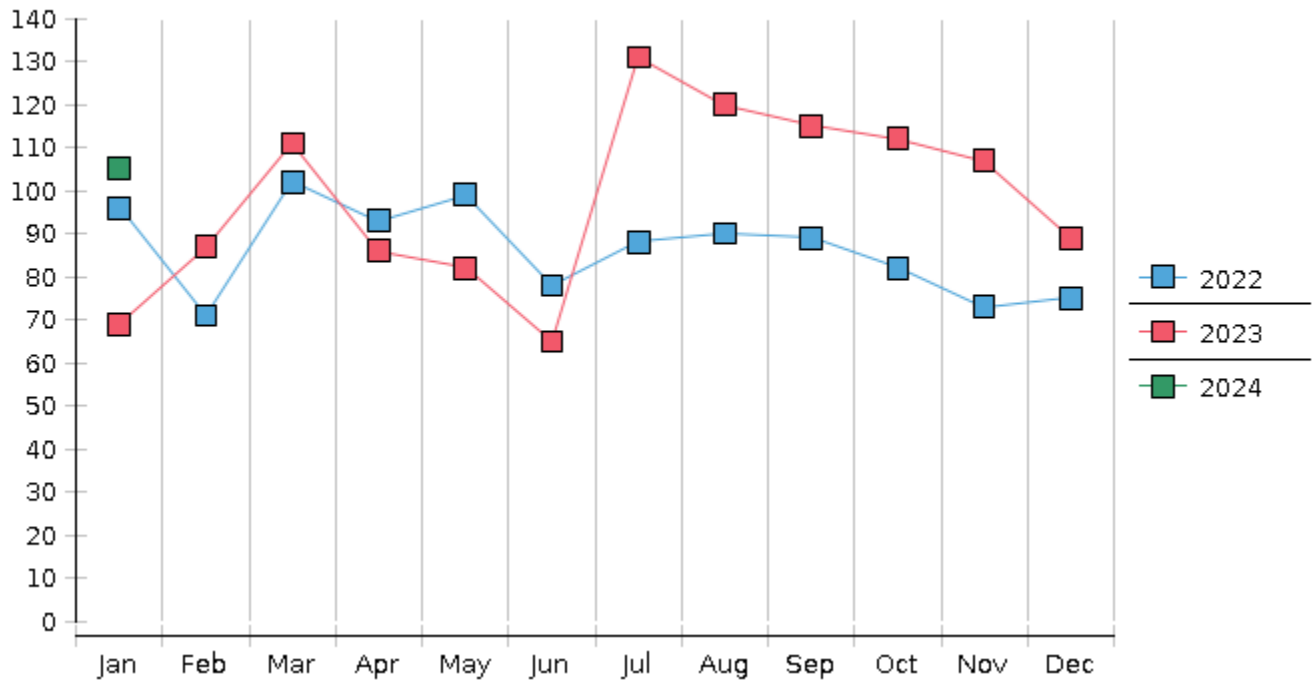
Capsule View	Jan 2024	Dec 2023	Jan 2023	% Change	
	this month	last month	this month last year	from last month	from this month last year
Bankruptcies Filed					
Chapter 7	92	72	55	27.78%	67.27%
Chapter 11	1	0	0	100%	100%
Chapter 12	0	0	0	0%	0%
Chapter 13	12	17	14	-29.41%	-14.29%
TOTAL BANKRUPTCY FILINGS	105	89	69	17.98%	52.17%
Adversaries					
Adversaries Filed	5	0	1	500%	400%
YEAR-TO-DATE	2024(CY)	2023(LY)	% Change		
BANKRUPTCIES FILED²			CY - LY		
Chapter 7	92	55	67.27%		
Chapter 11	1	0	100%		
Chapter 12	0	0	0%		
Chapter 13	12	14	-14.29%		
<u>TOTAL FILINGS</u>	105	69	52.17%		
BANKRUPTCIES PENDING⁽¹⁾⁽²⁾					
Chapter 7	443	417	6.24%		
Chapter 11	21	20	5%		
Chapter 12	0	0	0%		
Chapter 13	620	663	-6.49%		
<u>TOTAL PENDING</u>	1,084	1,100	-1.45%		
ADVERSARY PROCEEDINGS					
Filed	5	1	400%		
<u>TOTAL PENDING¹</u>	45	39	15.38%		
AVERAGES					
Chapter 7 Average Disposition ³ in Days	142	176	-19.32%		
Chapter 13 Average Disposition ³ in Days	954	1049	-9.06%		
Chapter 13 Average Days to Confirmation	178	121	47.11%		

1 Pending totals are generated from CM/ECF on a time frame ending on the last day of the month.

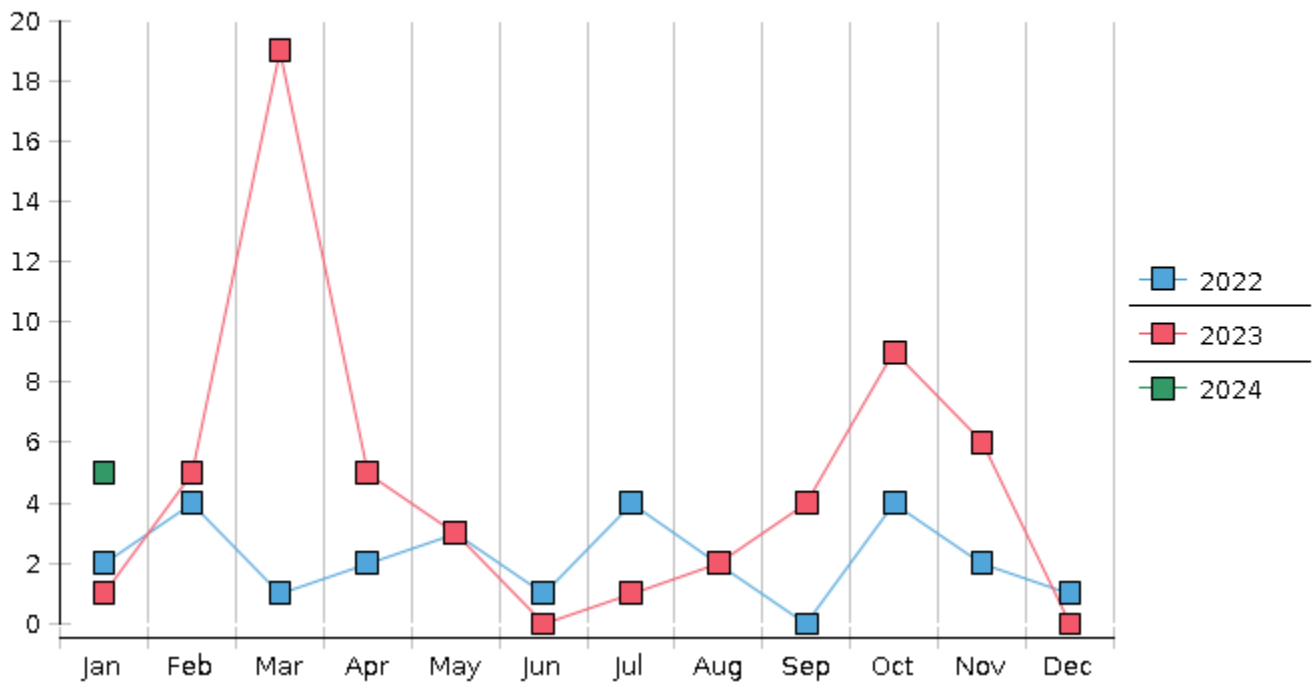
2 Chapter breakdowns are pulled from the Dynamic CM/ECF Database and may change over time due to conversions or other case changes.

3. Average disposition represents number of days from filing to discharge/dismissal of case.

Monthly Bankruptcy Filings



Monthly Adversary Filings



United States Bankruptcy Court - District of New Mexico
 Pro Se Filings

	Jan	Feb	Mar	Apr	May	Jun	Jul	Aug	Sep	Oct	Nov	Dec	YTD Total
2023	69	87	111	86	82	65	131	120	115	112	107	89	1,174
pro se 7	6	5	3	5	7	2	6	6	10	6	6	4	66
pro se 13	0	1	4	2	2	1	0	2	2	2	2	3	21
pro se with BPP	1	1	0	2	2	0	2	0	2	2	0	1	13
% Of Bankruptcies Filed	8.7%	6.9%	6.31%	8.14%	10.98%	4.62%	4.58%	6.67%	10.43%	7.14%	7.48%	7.87%	7.41%
2024	105												105
pro se 7	5												5
pro se 13	4												4
pro se with BPP	1												1
% Of Bankruptcies Filed	9.52%												8.57%
	Jan	Feb	Mar	Apr	May	Jun	Jul	Aug	Sep	Oct	Nov	Dec	YTD Total

Note: YTD Total of pro se bankruptcies filed does not reflect one (1) pro se ch 11 filing.