

United States Bankruptcy Court  
District of New Mexico

August 1, 2023  
CM/ECF Real Time Statistics  
**July 2023 Report**

Capsule View	Jul 2023	Jun 2023	Jul 2022	% Change	
	this month	last month	this month last year	from last month	from this month last year
<b>Bankruptcies Filed</b>					
Chapter 7	115	51	77	125.49%	49.35%
Chapter 11	1	1	1	0%	0%
Chapter 12	0	0	0	0%	0%
Chapter 13	15	13	10	15.38%	50%
<b>TOTAL BANKRUPTCY FILINGS</b>	131	65	88	101.54%	48.86%
<b>Adversaries</b>					
Adversaries Filed	1	0	4	100%	-75%
YEAR-TO-DATE	2023(CY)	2022(LY)	% Change		
BANKRUPTCIES FILED <sup>2</sup>				CY - LY	
Chapter 7	515	529	-2.65%		
Chapter 11	3	3	0%		
Chapter 12	0	0	0%		
Chapter 13	113	95	18.95%		
<b><u>TOTAL FILINGS</u></b>	631	627	0.64%		
<b>BANKRUPTCIES PENDING<sup>(1)(2)</sup></b>					
Chapter 7	402	549	-26.78%		
Chapter 11	18	23	-21.74%		
Chapter 12	0	1	-100%		
Chapter 13	660	706	-6.52%		
<b><u>TOTAL PENDING</u></b>	1,080	1,279	-15.56%		
<b>ADVERSARY PROCEEDINGS</b>					
Filed	34	17	100%		
<b><u>TOTAL PENDING<sup>1</sup></u></b>	42	40	5%		
<b>AVERAGES</b>					
Chapter 7 Average Disposition <sup>3</sup> in Days	162	144	12.5%		
Chapter 13 Average Disposition <sup>3</sup> in Days	1214	1212	0.17%		
Chapter 13 Average Days to Confirmation	144	180	-20%		

1 Pending totals are generated from CM/ECF on a time frame ending on the last day of the month.

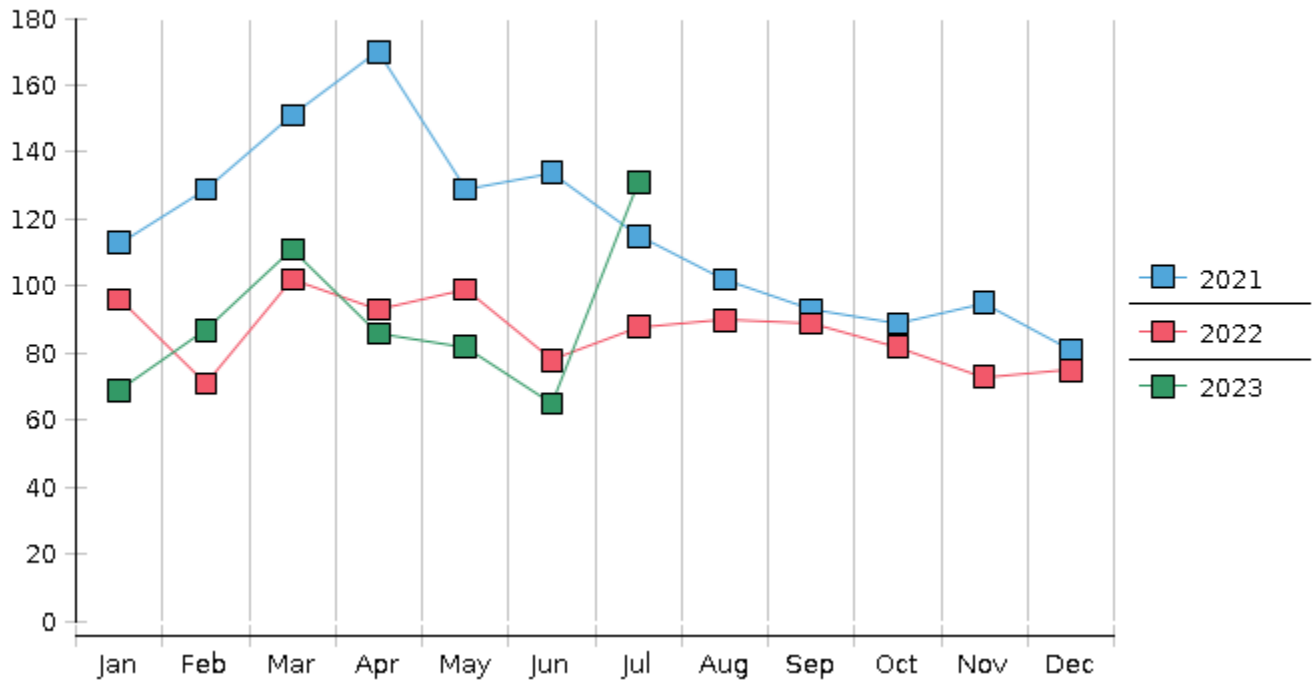
2 Chapter breakdowns are pulled from the Dynamic CM/ECF Database and may change over time due to conversions or other case changes.

3. Average disposition represents number of days from filing to discharge/dismissal of case.

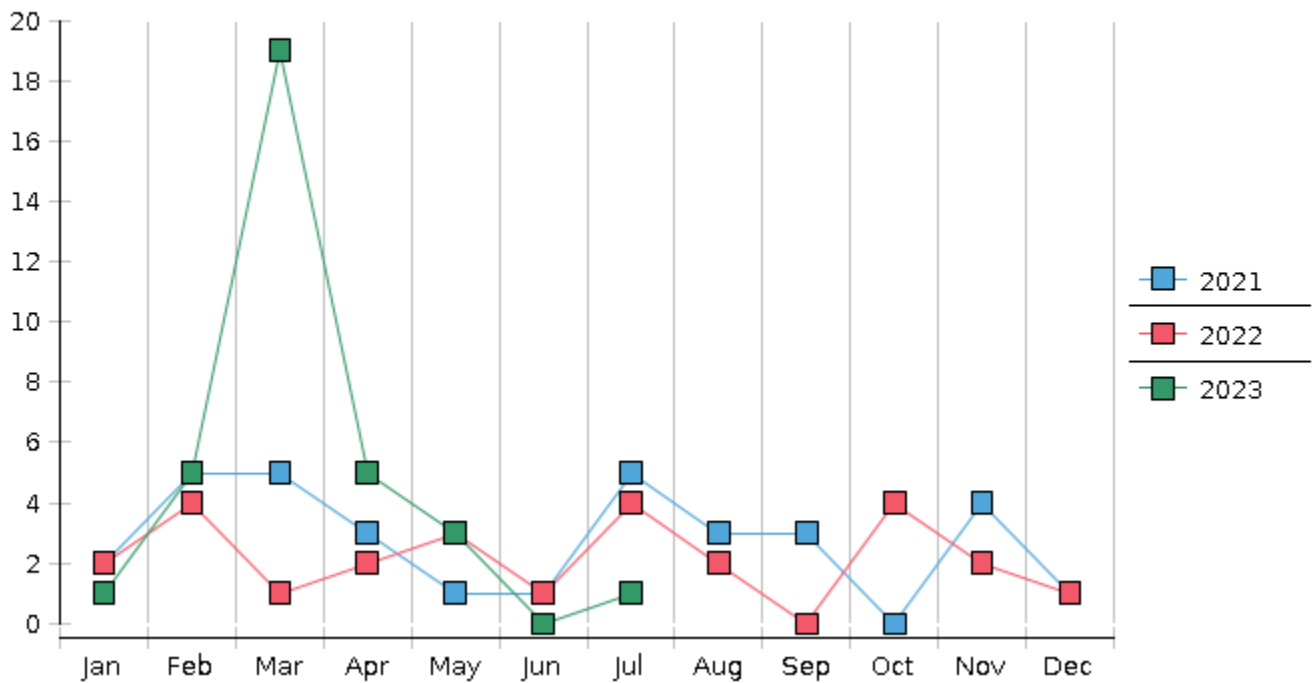
United States Bankruptcy Court - District of New Mexico  
 Statistics - Year-To-Date Totals

<b>2023</b>	January	February	March	April	May	June	July	August	September	October	November	December	<b>Total YTD</b>
<b>FILED</b>													<b>FILED</b>
Chapter 7 Combined	55	70	91	68	65	51	115						<b>515</b>
Chapter 11	0	0	0	0	1	1	1						<b>3</b>
Chapter 12	0	0	0	0	0	0	0						<b>0</b>
Chapter 13	14	17	20	18	16	13	15						<b>113</b>
Total Filed for Month	<b>69</b>	<b>87</b>	<b>111</b>	<b>86</b>	<b>82</b>	<b>65</b>	<b>131</b>						
Totals Filed Year-to-Date	<b>69</b>	<b>156</b>	<b>267</b>	<b>353</b>	<b>435</b>	<b>500</b>	<b>631</b>						<b>631</b>
<b>CLOSED</b>													<b>CLOSED</b>
Chapter 7 Combined Total	98	60	67	59	93	85	104						<b>566</b>
Asset	4	3	6	5	3	3	3						<b>27</b>
No Asset	94	57	61	54	90	82	101						<b>539</b>
Chapter 11	3	1	1	2	1	0	0						<b>8</b>
Chapter 12	0	0	0	0	0	0	0						<b>0</b>
Chapter 13	22	23	23	12	30	21	7						<b>138</b>
Totals Closed for Month	<b>123</b>	<b>84</b>	<b>91</b>	<b>73</b>	<b>124</b>	<b>106</b>	<b>111</b>						
Totals Closed Year-to-Date	<b>123</b>	<b>207</b>	<b>298</b>	<b>371</b>	<b>495</b>	<b>601</b>	<b>712</b>						<b>712</b>
<b>Closing Breakdown</b>													
Closed by Case Managers	41	42	51	26	52	40	17						<b>269</b>
Closed Automatically	82	42	40	47	72	66	94						<b>443</b>
Percent Closed by Case Managers	<b>33.33%</b>	<b>50.0%</b>	<b>56.04%</b>	<b>35.62%</b>	<b>41.94%</b>	<b>37.74%</b>	<b>15.32%</b>						<b>37.78%</b>
Percent Closed Automatically	<b>66.67%</b>	<b>50.0%</b>	<b>43.96%</b>	<b>64.38%</b>	<b>58.06%</b>	<b>62.26%</b>	<b>84.68%</b>						<b>62.22%</b>
<b>PENDING</b>													
Chapter 7	406	416	442	451	424	390	402						
Chapter 11	20	19	18	16	16	17	18						
Chapter 12	0	0	0	0	0	0	0						
Chapter 13	674	668	666	672	658	651	660						
Total Pending for Month	<b>1100</b>	<b>1103</b>	<b>1126</b>	<b>1139</b>	<b>1098</b>	<b>1058</b>	<b>1080</b>						
<b>Adversary Proceedings</b>													<b>AP</b>
Filed	1	5	19	5	3	0	1						<b>34</b>
Closed	1	1	10	11	5	3	1						<b>32</b>
Total Adversaries Pending	<b>39</b>	<b>43</b>	<b>52</b>	<b>46</b>	<b>45</b>	<b>42</b>	<b>42</b>						

### Monthly Bankruptcy Filings



### Monthly Adversary Filings



United States Bankruptcy Court - District of New Mexico  
Pro Se Filings

	Jan	Feb	Mar	Apr	May	Jun	Jul	Aug	Sep	Oct	Nov	Dec	YTD Total
2022	96	71	102	93	99	78	88	90	89	82	73	75	1,036
pro se 7	8	1	2	6	5	3	5	8	3	5	3	10	59
pro se 13	2	1	0	2	3	4	2	1	0	0	3	2	20
pro se with BPP	5	1	0	0	2	0	3	3	1	2	0	1	18
% Of Bankruptcies Filed	10.42%	2.82%	1.96%	8.6%	8.08%	8.97%	7.95%	10%	3.37%	6.1%	8.22%	16%	7.63%
2023	69	87	111	86	82	65	131						631
pro se 7	6	5	3	5	7	2	6						34
pro se 13	0	1	4	2	2	1	0						10
pro se with BPP	1	1	0	2	2	0	2						8
% Of Bankruptcies Filed	8.7%	6.9%	6.31%	8.14%	10.98%	4.62%	4.58%						6.97%
	Jan	Feb	Mar	Apr	May	Jun	Jul	Aug	Sep	Oct	Nov	Dec	YTD Total