

United States Bankruptcy Court
District of New Mexico

August 1, 2024
CM/ECF Real Time Statistics
July 2024 Report

Capsule View	Jul 2024	Jun 2024	Jul 2023	% Change	
	this month	last month	this month last year	from last month	from this month last year
Bankruptcies Filed					
Chapter 7	111	90	115	23.33%	-3.48%
Chapter 11	1	0	1	100%	0%
Chapter 12	0	0	0	0%	0%
Chapter 13	21	16	15	31.25%	40%
TOTAL BANKRUPTCY FILINGS	133	106	131	25.47%	1.53%
Adversaries					
Adversaries Filed	3	0	1	300%	200%
YEAR-TO-DATE	2024(CY)	2023(LY)	% Change		
BANKRUPTCIES FILED²			CY - LY		
Chapter 7	684	515	32.82%		
Chapter 11	5	3	66.67%		
Chapter 12	0	0	0%		
Chapter 13	112	113	-0.88%		
<u>TOTAL FILINGS</u>	801	631	26.94%		
BANKRUPTCIES PENDING⁽¹⁾⁽²⁾					
Chapter 7	431	425	1.41%		
Chapter 11	18	17	5.88%		
Chapter 12	0	0	0%		
Chapter 13	592	638	-7.21%		
<u>TOTAL PENDING</u>	1,041	1,080	-3.61%		
ADVERSARY PROCEEDINGS					
Filed	21	34	-38.24%		
<u>TOTAL PENDING¹</u>	41	42	-2.38%		
AVERAGES					
Chapter 7 Average Disposition ³ in Days	132	162	-18.52%		
Chapter 13 Average Disposition ³ in Days	1261	1212	4.04%		
Chapter 13 Average Days to Confirmation	151	146	3.42%		

1 Pending totals are generated from CM/ECF on a time frame ending on the last day of the month.

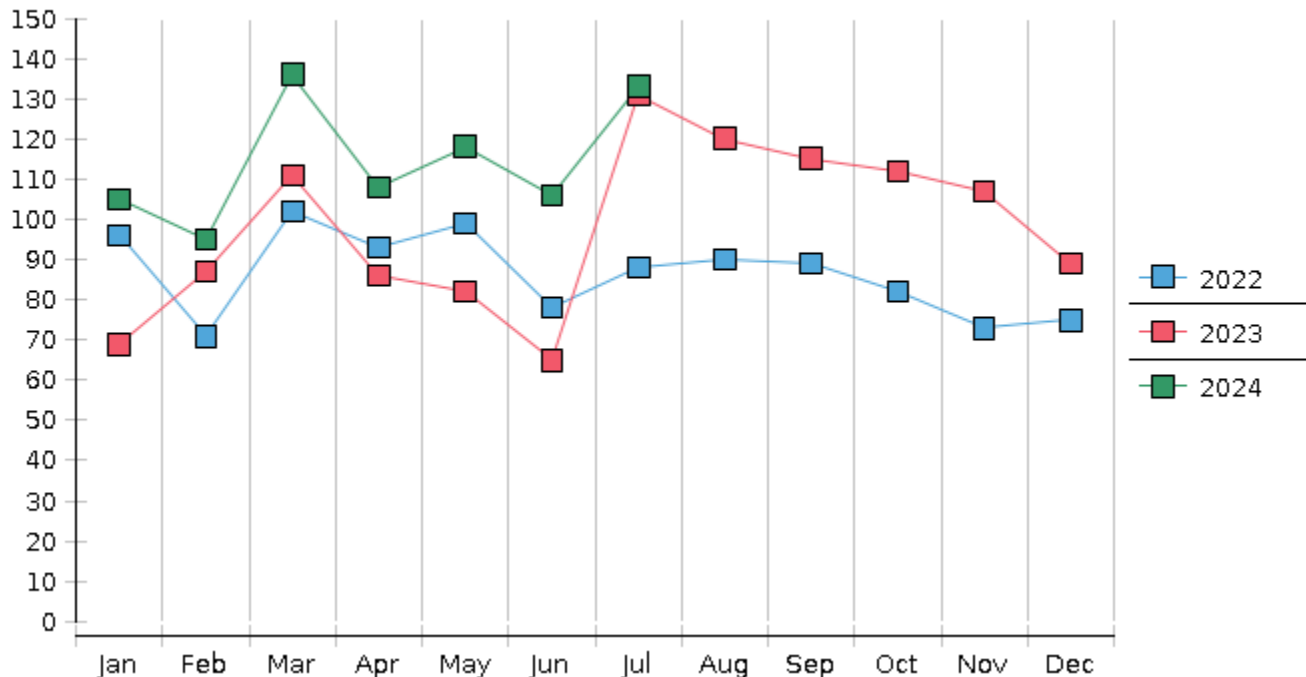
2 Chapter breakdowns are pulled from the Dynamic CM/ECF Database and may change over time due to conversions or other case changes.

3. Average disposition represents number of days from filing to discharge/dismissal of case.

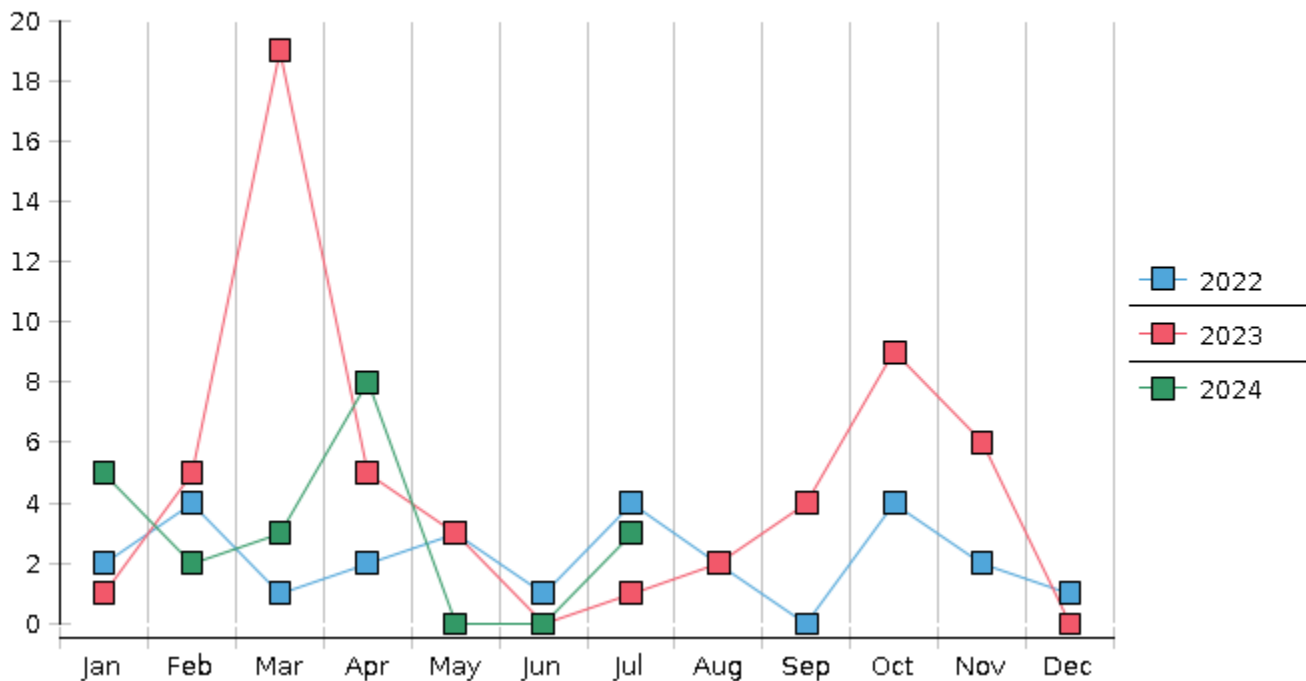
United States Bankruptcy Court - District of New Mexico
 Statistics - Year-To-Date Totals

2024	January	February	March	April	May	June	July	August	September	October	November	December	Total YTD
FILED													FILED
Chapter 7 Combined	92	86	117	92	96	90	111						684
Chapter 11	1	1	0	1	1	0	1						5
Chapter 12	0	0	0	0	0	0	0						0
Chapter 13	12	8	19	15	21	16	21						112
Total Filed for Month	105	95	136	108	118	106	133						
Totals Filed Year-to-Date	105	200	336	444	562	668	801						801
CLOSED													CLOSED
Chapter 7 Combined Total	131	96	97	84	104	100	134						746
Asset	7	6	5	7	13	4	3						45
No Asset	124	90	92	77	91	96	131						701
Chapter 11	1	0	0	1	1	1	2						6
Chapter 12	0	0	0	0	0	0	0						0
Chapter 13	15	26	15	19	23	25	16						139
Totals Closed for Month	147	122	112	104	128	126	152						
Totals Closed Year-to-Date	147	269	381	485	613	739	891						891
Closing Breakdown													
Closed by Case Managers	30	42	38	40	49	40	34						273
Closed Automatically	117	80	74	64	79	86	118						618
Percent Closed by Case Managers	20.41%	34.43%	33.93%	38.46%	38.28%	31.75%	22.37%						30.64%
Percent Closed Automatically	79.59%	65.57%	66.07%	61.54%	61.72%	68.25%	77.63%						69.36%
PENDING													
Chapter 7	451	441	461	470	463	453	431						
Chapter 11	19	20	20	20	20	19	18						
Chapter 12	0	0	0	0	0	0	0						
Chapter 13	614	596	600	597	596	587	592						
Total Pending for Month	1084	1057	1081	1087	1079	1059	1041						
Adversary Proceedings													AP
Filed	5	2	3	8	0	0	3						21
Closed	3	3	7	5	3	2	1						24
Total Adversaries Pending	45	45	41	44	41	39	41						

Monthly Bankruptcy Filings



Monthly Adversary Filings



United States Bankruptcy Court - District of New Mexico
 Pro Se Filings

	Jan	Feb	Mar	Apr	May	Jun	Jul	Aug	Sep	Oct	Nov	Dec	YTD Total
2023	69	87	111	86	82	65	131	120	115	112	107	89	1,174
pro se 7	6	5	3	5	7	2	6	6	10	6	6	4	66
pro se 13	0	1	4	2	2	1	0	2	2	2	2	3	21
pro se with BPP	1	1	0	2	2	0	2	0	2	2	0	1	13
% Of Bankruptcies Filed	8.7%	6.9%	6.31%	8.14%	10.98%	4.62%	4.58%	6.67%	10.43%	7.14%	7.48%	7.87%	7.41%
2024	105	95	136	108	118	106	133						801
pro se 7	5	7	6	2	7	9	5						41
pro se 13	4	0	0	1	1	0	5						11
pro se with BPP	1	2	0	1	2	1	2						9
% Of Bankruptcies Filed	9.52%	7.37%	4.41%	2.78%	7.63%	8.49%	7.52%						6.49%
	Jan	Feb	Mar	Apr	May	Jun	Jul	Aug	Sep	Oct	Nov	Dec	YTD Total