

United States Bankruptcy Court  
District of New Mexico

August 1, 2022  
CM/ECF Real Time Statistics  
**July 2022 Report**

Capsule View	Jul 2022	Jun 2022	Jul 2021	% Change	
	this month	last month	this month last year	from last month	from this month last year
<b>Bankruptcies Filed</b>					
Chapter 7	77	62	105	24.19%	-26.67%
Chapter 11	1	0	1	100%	0%
Chapter 12	0	0	0	0%	0%
Chapter 13	10	16	9	-37.5%	11.11%
<b>TOTAL BANKRUPTCY FILINGS</b>	88	78	115	12.82%	-23.48%
<b>Adversaries</b>					
Adversaries Filed	4	1	5	300%	-20%
YEAR-TO-DATE	2022(CY)	2021(LY)	% Change		
<b>BANKRUPTCIES FILED<sup>2</sup></b>			<b>CY - LY</b>		
Chapter 7	529	860	-38.49%		
Chapter 11	3	3	0%		
Chapter 12	0	1	-100%		
Chapter 13	95	77	23.38%		
<b><u>TOTAL FILINGS</u></b>	627	941	-33.37%		
<b>BANKRUPTCIES PENDING<sup>(1)(2)</sup></b>					
Chapter 7	517	661	-21.79%		
Chapter 11	24	28	-14.29%		
Chapter 12	1	1	0%		
Chapter 13	736	796	-7.54%		
<b><u>TOTAL PENDING</u></b>	1,278	1,486	-14%		
<b>ADVERSARY PROCEEDINGS</b>					
Filed	17	22	-22.73%		
<b><u>TOTAL PENDING<sup>1</sup></u></b>	40	63	-36.51%		
<b>AVERAGES</b>					
Chapter 7 Average Disposition <sup>3</sup> in Days	144	130	10.77%		
Chapter 13 Average Disposition <sup>3</sup> in Days	1217	1155	5.37%		
Chapter 13 Average Days to Confirmation	174	188	-7.45%		

1 Pending totals are generated from CM/ECF on a time frame ending on the last day of the month.

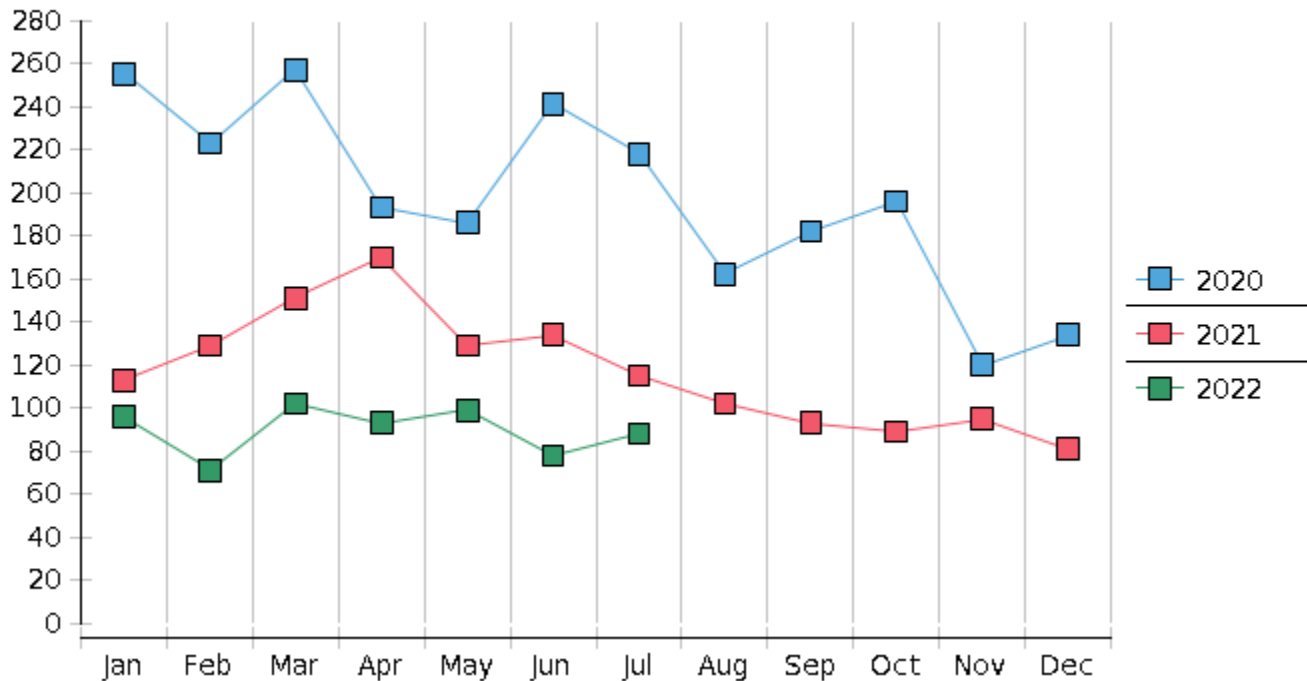
2 Chapter breakdowns are pulled from the Dynamic CM/ECF Database and may change over time due to conversions or other case changes.

3. Average disposition represents number of days from filing to discharge/dismissal of case.

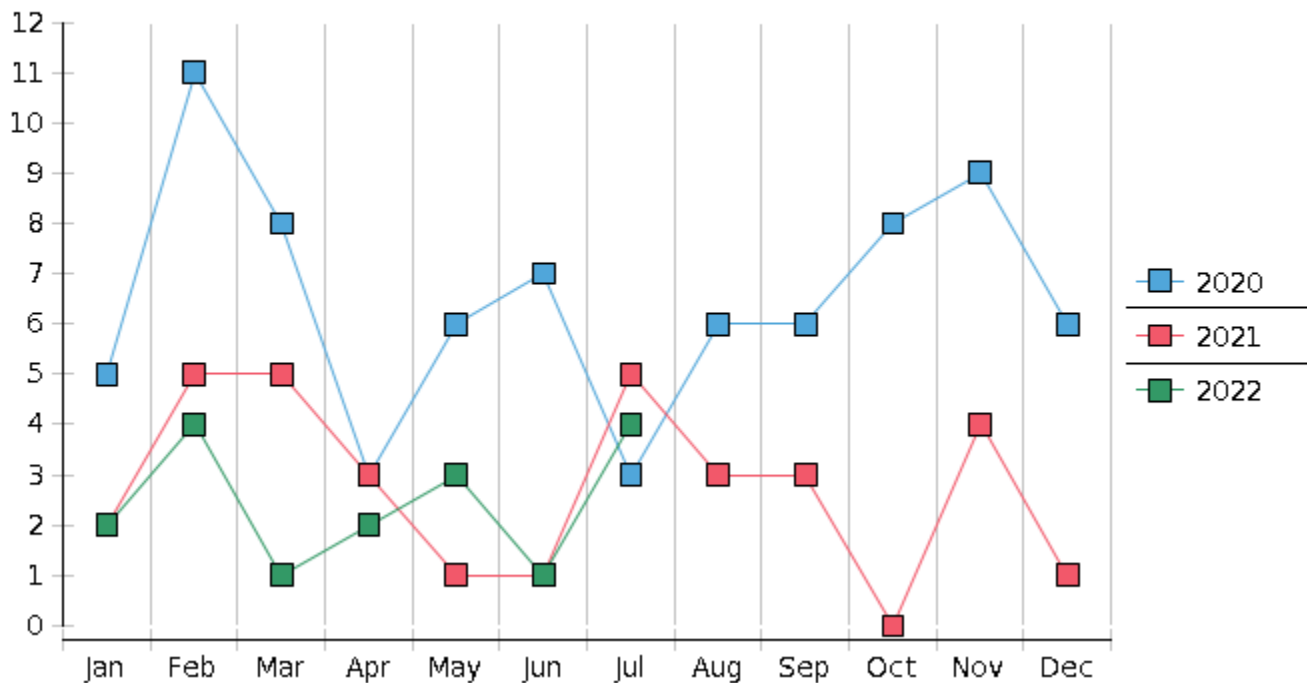
United States Bankruptcy Court - District of New Mexico  
 Statistics - Year-To-Date Totals

<b>2022</b>	January	February	March	April	May	June	July	August	September	October	November	December	<b>Total YTD</b>
<b>FILED</b>													<b>FILED</b>
Chapter 7 Combined	81	57	86	76	90	62	77						<b>529</b>
Chapter 11	1	0	1	0	0	0	1						<b>3</b>
Chapter 12	0	0	0	0	0	0	0						<b>0</b>
Chapter 13	14	14	15	17	9	16	10						<b>95</b>
Total Filed for Month	<b>96</b>	<b>71</b>	<b>102</b>	<b>93</b>	<b>99</b>	<b>78</b>	<b>88</b>						
Totals Filed Year-to-Date	<b>96</b>	<b>167</b>	<b>269</b>	<b>362</b>	<b>461</b>	<b>539</b>	<b>627</b>						<b>627</b>
<b>CLOSED</b>													<b>CLOSED</b>
Chapter 7 Combined Total	95	87	71	53	116	87	60						<b>569</b>
Asset	3	3	5	3	8	4	4						<b>30</b>
No Asset	92	84	66	50	108	83	56						<b>539</b>
Chapter 11	1	2	1	4	1	0	0						<b>9</b>
Chapter 12	0	0	0	0	0	0	0						<b>0</b>
Chapter 13	18	23	23	19	16	14	23						<b>136</b>
Totals Closed for Month	<b>114</b>	<b>112</b>	<b>95</b>	<b>76</b>	<b>133</b>	<b>101</b>	<b>83</b>						
Totals Closed Year-to-Date	<b>114</b>	<b>226</b>	<b>321</b>	<b>397</b>	<b>530</b>	<b>631</b>	<b>714</b>						<b>714</b>
<b>Closing Breakdown</b>													
Closed by Case Managers	32	35	41	39	41	39	33						<b>260</b>
Closed Automatically	82	77	54	37	92	62	50						<b>454</b>
Percent Closed by Case Managers	<b>28.07%</b>	<b>31.25%</b>	<b>43.16%</b>	<b>51.32%</b>	<b>30.83%</b>	<b>38.61%</b>	<b>39.76%</b>						<b>36.41%</b>
Percent Closed Automatically	<b>71.93%</b>	<b>68.75%</b>	<b>56.84%</b>	<b>48.68%</b>	<b>69.17%</b>	<b>61.39%</b>	<b>60.24%</b>						<b>63.59%</b>
<b>PENDING</b>													
Chapter 7	523	498	515	544	523	500	517						
Chapter 11	28	26	26	23	22	22	24						
Chapter 12	0	0	0	0	0	1	1						
Chapter 13	773	764	757	754	747	749	736						
Total Pending for Month	<b>1324</b>	<b>1288</b>	<b>1298</b>	<b>1321</b>	<b>1292</b>	<b>1272</b>	<b>1278</b>						
<b>Adversary Proceedings</b>													<b>AP</b>
Filed	2	4	1	2	3	1	4						<b>17</b>
Closed	2	1	0	5	3	8	5						<b>24</b>
Total Adversaries Pending	<b>46</b>	<b>50</b>	<b>51</b>	<b>48</b>	<b>48</b>	<b>41</b>	<b>40</b>						

## Monthly Bankruptcy Filings



## Monthly Adversary Filings



United States Bankruptcy Court - District of New Mexico  
Pro Se Filings

	Jan	Feb	Mar	Apr	May	Jun	Jul	Aug	Sep	Oct	Nov	Dec	YTD Total
2021	113	129	151	170	129	134	115	102	93	89	95	81	1,401
pro se 7	11	14	10	12	10	18	6	8	8	3	5	5	110
pro se 13	2	2	0	3	1	0	2	1	3	1	3	1	19
pro se with BPP	5	10	4	6	5	9	2	2	2	1	4	3	53
% Of Bankruptcies Filed	11.5%	12.4%	6.62%	8.82%	8.53%	13.43%	6.96%	8.82%	11.83%	4.49%	8.42%	7.41%	9.21%
2022	96	71	102	93	99	78	88						627
pro se 7	8	1	2	6	5	3	5						30
pro se 13	2	1	0	2	3	4	2						14
pro se with BPP	5	1	0	0	2	0	3						11
% Of Bankruptcies Filed	10.42%	2.82%	1.96%	8.6%	8.08%	8.97%	7.95%						7.02%
	Jan	Feb	Mar	Apr	May	Jun	Jul	Aug	Sep	Oct	Nov	Dec	YTD Total