

United States Bankruptcy Court

District of New Mexico

July 3, 2023

CM/ECF Real Time Statistics

June 2023 Report

Capsule View	Jun 2023	May 2023	Jun 2022	% Change	
	this month	last month	this month last year	from last month	from this month last year
Bankruptcies Filed					
Chapter 7	51	65	62	-21.54%	-17.74%
Chapter 11	1	1	0	0%	100%
Chapter 12	0	0	0	0%	0%
Chapter 13	13	16	16	-18.75%	-18.75%
TOTAL BANKRUPTCY FILINGS	65	82	78	-20.73%	-16.67%
Adversaries					
Adversaries Filed	0	3	1	-300%	-100%
YEAR-TO-DATE					
	2023(CY)	2022(LY)	% Change		
BANKRUPTCIES FILED²			CY - LY		
Chapter 7	400	452	-11.5%		
Chapter 11	2	2	0%		
Chapter 12	0	0	0%		
Chapter 13	98	85	15.29%		
<u>TOTAL FILINGS</u>	500	539	-7.24%		
BANKRUPTCIES PENDING⁽¹⁾⁽²⁾					
Chapter 7	389	531	-26.74%		
Chapter 11	17	21	-19.05%		
Chapter 12	0	1	-100%		
Chapter 13	652	720	-9.44%		
<u>TOTAL PENDING</u>	1,058	1,273	-16.89%		
ADVERSARY PROCEEDINGS					
Filed	33	13	153.85%		
<u>TOTAL PENDING¹</u>	42	41	2.44%		
AVERAGES					
Chapter 7 Average Disposition ³ in Days	169	145	16.55%		
Chapter 13 Average Disposition ³ in Days	1206	1210	-0.33%		
Chapter 13 Average Days to Confirmation	147	182	-19.23%		

1 Pending totals are generated from CM/ECF on a time frame ending on the last day of the month.

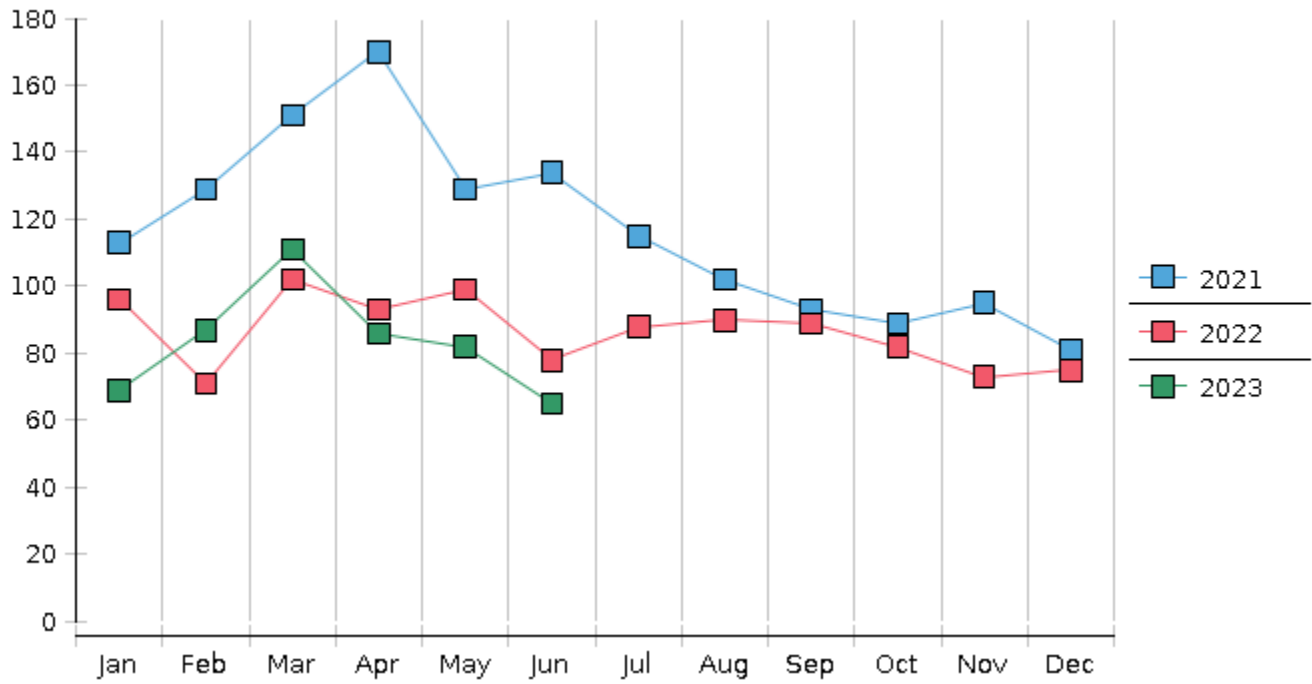
2 Chapter breakdowns are pulled from the Dynamic CM/ECF Database and may change over time due to conversions or other case changes.

3. Average disposition represents number of days from filing to discharge/dismissal of case.

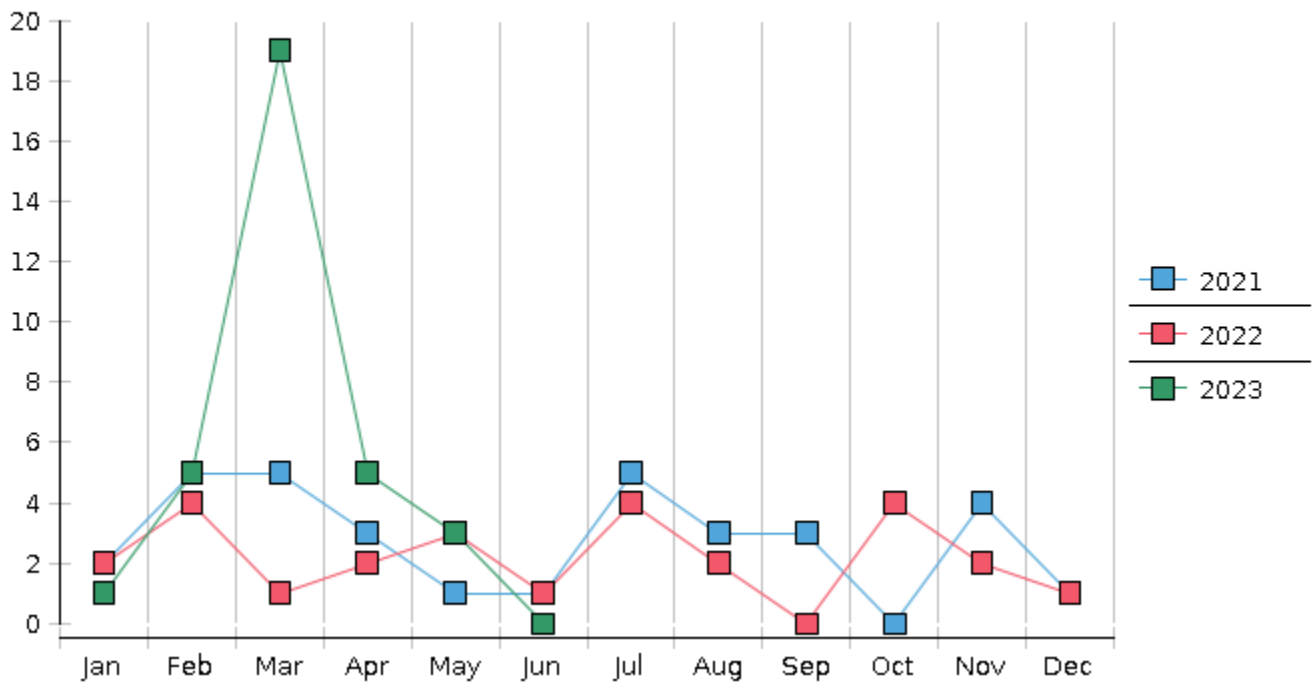
United States Bankruptcy Court - District of New Mexico
 Statistics - Year-To-Date Totals

2023	January	February	March	April	May	June	July	August	September	October	November	December	Total YTD
FILED													FILED
Chapter 7 Combined	55	70	91	68	65	51							400
Chapter 11	0	0	0	0	1	1							2
Chapter 12	0	0	0	0	0	0							0
Chapter 13	14	17	20	18	16	13							98
Total Filed for Month	69	87	111	86	82	65							
Totals Filed Year-to-Date	69	156	267	353	435	500							500
CLOSED													CLOSED
Chapter 7 Combined Total	98	60	67	59	93	85							462
Asset	4	3	6	5	3	3							24
No Asset	94	57	61	54	90	82							438
Chapter 11	3	1	1	2	1	0							8
Chapter 12	0	0	0	0	0	0							0
Chapter 13	22	23	23	12	30	21							131
Totals Closed for Month	123	84	91	73	124	106							
Totals Closed Year-to-Date	123	207	298	371	495	601							601
Closing Breakdown													
Closed by Case Managers	41	42	51	26	52	40							252
Closed Automatically	82	42	40	47	72	66							349
Percent Closed by Case Managers	33.33%	50.0%	56.04%	35.62%	41.94%	37.74%							41.93%
Percent Closed Automatically	66.67%	50.0%	43.96%	64.38%	58.06%	62.26%							58.07%
PENDING													
Chapter 7	405	415	441	450	423	389							
Chapter 11	20	19	18	16	16	17							
Chapter 12	0	0	0	0	0	0							
Chapter 13	675	669	667	673	659	652							
Total Pending for Month	1100	1103	1126	1139	1098	1058							
Adversary Proceedings													AP
Filed	1	5	19	5	3	0							33
Closed	1	1	10	11	5	3							31
Total Adversaries Pending	39	43	52	46	45	42							

Monthly Bankruptcy Filings



Monthly Adversary Filings



United States Bankruptcy Court - District of New Mexico
 Pro Se Filings

	Jan	Feb	Mar	Apr	May	Jun	Jul	Aug	Sep	Oct	Nov	Dec	YTD Total
2022	96	71	102	93	99	78	88	90	89	82	73	75	1,036
pro se 7	8	1	2	6	5	3	5	8	3	5	3	10	59
pro se 13	2	1	0	2	3	4	2	1	0	0	3	2	20
pro se with BPP	5	1	0	0	2	0	3	3	1	2	0	1	18
% Of Bankruptcies Filed	10.42%	2.82%	1.96%	8.6%	8.08%	8.97%	7.95%	10%	3.37%	6.1%	8.22%	16%	7.63%
2023	69	87	111	86	82	65							500
pro se 7	6	5	3	5	7	2							28
pro se 13	0	1	4	2	2	1							10
pro se with BPP	1	1	0	2	2	0							6
% Of Bankruptcies Filed	8.7%	6.9%	6.31%	8.14%	10.98%	4.62%							7.6%
	Jan	Feb	Mar	Apr	May	Jun	Jul	Aug	Sep	Oct	Nov	Dec	YTD Total