

United States Bankruptcy Court
District of New Mexico

July 2, 2025

CM/ECF Real Time Statistics

June 2025 Report

Capsule View	Jun 2025	May 2025	Jun 2024	% Change	
	this month	last month	this month last year	from last month	from this month last year
Bankruptcies Filed					
Chapter 7	129	121	90	6.61%	43.33%
Chapter 11	1	0	0	100%	100%
Chapter 12	0	0	0	0%	0%
Chapter 13	22	17	16	29.41%	37.5%
TOTAL BANKRUPTCY FILINGS	152	138	106	10.14%	43.4%
Adversaries					
Adversaries Filed	3	2	0	50%	300%
YEAR-TO-DATE	2025(CY)	2024(LY)	% Change		
BANKRUPTCIES FILED ²				CY - LY	
Chapter 7	714	573	24.61%		
Chapter 11	4	4	0%		
Chapter 12	0	0	0%		
Chapter 13	105	91	15.38%		
<u>TOTAL FILINGS</u>	823	668	23.2%		
BANKRUPTCIES PENDING ⁽¹⁾⁽²⁾					
Chapter 7	499	463	7.78%		
Chapter 11	14	18	-22.22%		
Chapter 12	2	0	200%		
Chapter 13	539	578	-6.75%		
<u>TOTAL PENDING</u>	1,054	1,059	-0.47%		
ADVERSARY PROCEEDINGS					
Filed	22	18	22.22%		
<u>TOTAL PENDING¹</u>	38	39	-2.56%		
AVERAGES					
Chapter 7 Average Disposition ³ in Days	119	134	-11.19%		
Chapter 13 Average Disposition ³ in Days	1176	1312	-10.37%		
Chapter 13 Average Days to Confirmation	180	160	12.5%		

1 Pending totals are generated from CM/ECF on a time frame ending on the last day of the month.

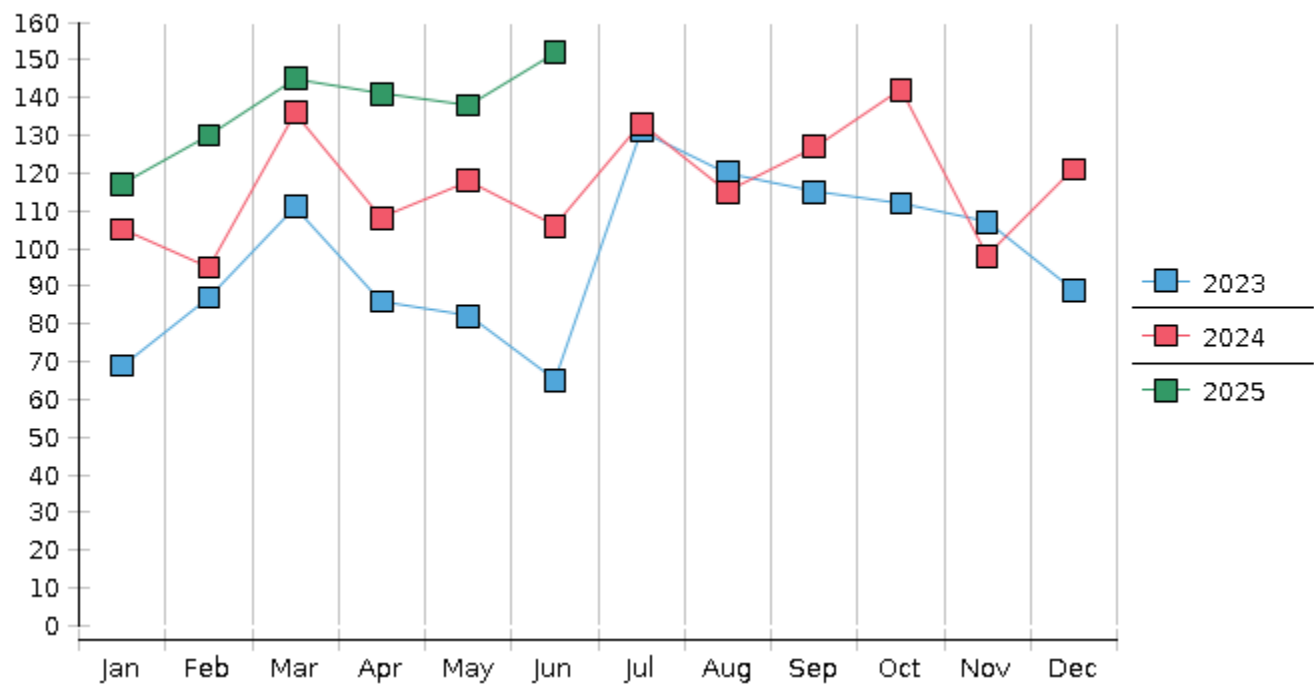
2 Chapter breakdowns are pulled from the Dynamic CM/ECF Database and may change over time due to conversions or other case changes.

3. Average disposition represents number of days from filing to discharge/dismissal of case.

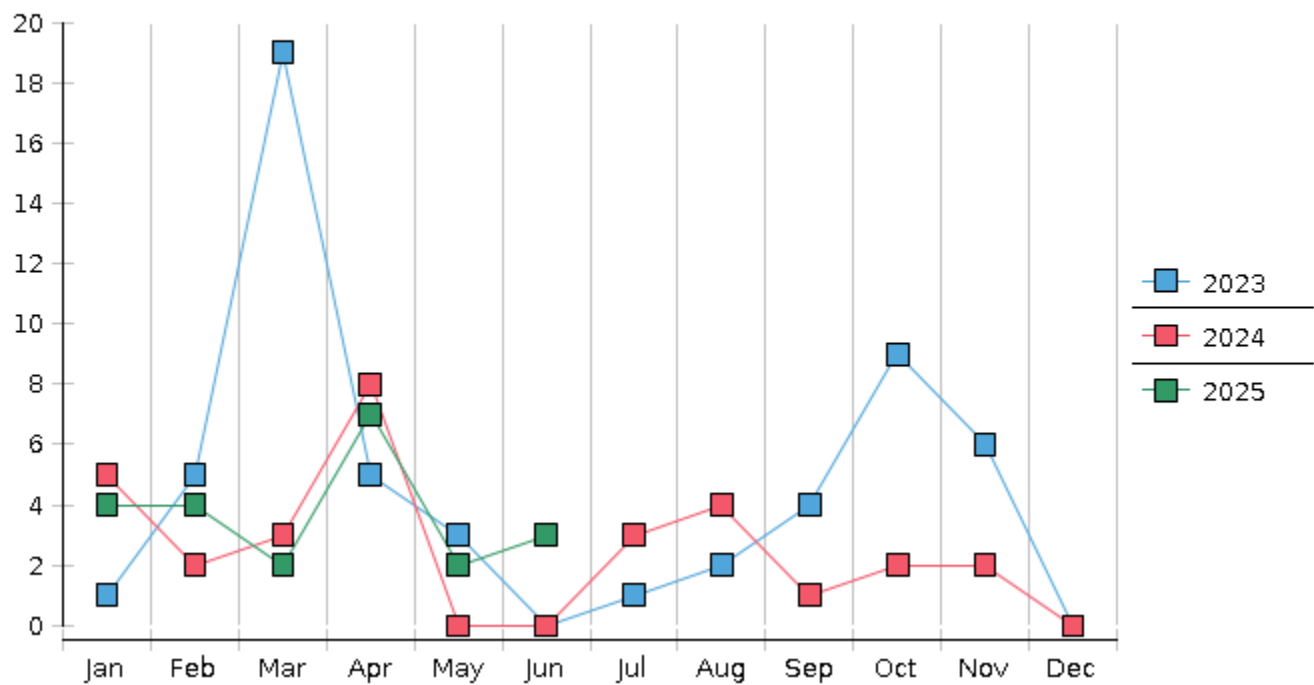
United States Bankruptcy Court - District of New Mexico
Statistics - Year-To-Date Totals

2025	January	February	March	April	May	June	July	August	September	October	November	December	Total YTD
FILED													FILED
Chapter 7 Combined	99	117	130	118	121	129							714
Chapter 11	1	1	0	1	0	1							4
Chapter 12	0	0	0	0	0	0							0
Chapter 13	17	12	15	22	17	22							105
Total Filed for Month	117	130	145	141	138	152							
Totals Filed Year-to-Date	117	247	392	533	671	823							823
CLOSED													CLOSED
Chapter 7 Combined Total	126	98	104	69	107	169							673
Asset	0	1	0	1	2	2							6
No Asset	126	97	104	68	105	167							667
Chapter 11	1	0	1	4	1	1							8
Chapter 12	0	0	0	0	0	0							0
Chapter 13	15	32	18	14	25	21							125
Totals Closed for Month	142	130	123	87	133	191							
Totals Closed Year-to-Date	142	272	395	482	615	806							806
Closing Breakdown													
Closed by Case Managers	34	45	29	32	41	38							219
Closed Automatically	108	85	94	55	92	153							587
Percent Closed by Case Managers	23.94%	34.62%	23.58%	36.78%	30.83%	19.9%							27.17%
Percent Closed Automatically	76.06%	65.38%	76.42%	63.22%	69.17%	80.1%							72.83%
PENDING													
Chapter 7	422	444	473	524	538	499							
Chapter 11	15	16	16	15	14	14							
Chapter 12	1	1	1	2	2	2							
Chapter 13	562	542	539	546	538	539							
Total Pending for Month	1000	1003	1029	1087	1092	1054							
Adversary Proceedings													AP
Filed	4	4	2	7	2	3							22
Closed	3	5	2	1	2	2							15
Total Adversaries Pending	32	31	31	37	37	38							

Monthly Bankruptcy Filings



Monthly Adversary Filings



United States Bankruptcy Court - District of New Mexico
Pro Se Filings

	Jan	Feb	Mar	Apr	May	Jun	Jul	Aug	Sep	Oct	Nov	Dec	YTD Total
2024	105	95	136	108	118	106	133	115	127	142	98	121	1,404
pro se 7	5	7	6	2	7	9	5	8	6	7	7	6	75
pro se 13	4	0	0	1	1	0	5	2	4	2	1	2	22
pro se with BPP	1	2	0	1	2	1	2	1	1	2	0	0	13
% Of Bankruptcies Filed	9.52%	7.37%	4.41%	2.78%	7.63%	8.49%	7.52%	8.7%	7.87%	6.34%	8.16%	6.61%	6.91%
2025	117	130	145	141	138	152							823
pro se 7	8	6	5	6	11	11							47
pro se 13	1	3	3	1	5	3							16
pro se with BPP	1	2	2	1	3	3							12
% Of Bankruptcies Filed	7.69%	6.92%	5.52%	5.67%	11.59%	9.21%							7.65%
	Jan	Feb	Mar	Apr	May	Jun	Jul	Aug	Sep	Oct	Nov	Dec	YTD Total