

United States Bankruptcy Court
District of New Mexico

April 1, 2022

CM/ECF Real Time Statistics

March 2022 Report

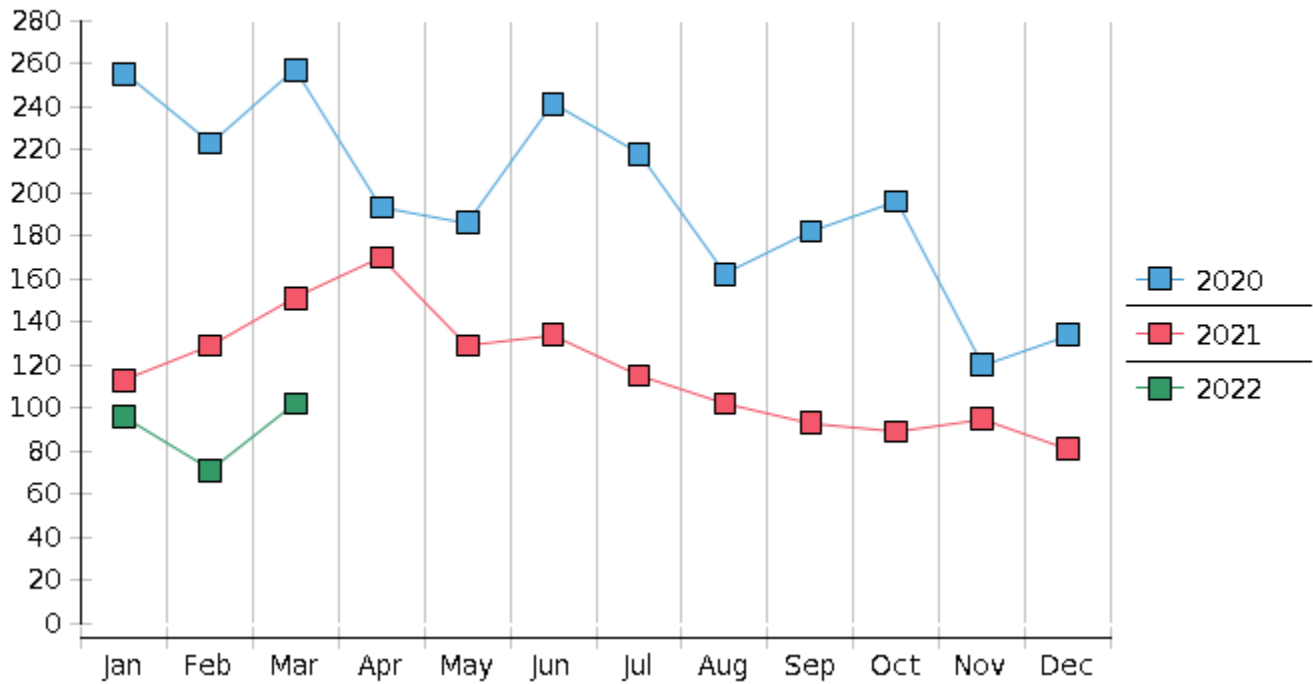
Capsule View	Mar 2022	Feb 2022	Mar 2021	% Change	
	this month	last month	this month last year	from last month	from this month last year
Bankruptcies Filed					
Chapter 7	86	57	140	50.88%	-38.57%
Chapter 11	1	0	0	100%	100%
Chapter 12	0	0	0	0%	0%
Chapter 13	15	14	11	7.14%	36.36%
TOTAL BANKRUPTCY FILINGS	102	71	151	43.66%	-32.45%
Adversaries					
Adversaries Filed	1	4	5	-75%	-80%
YEAR-TO-DATE	2022(CY)	2021(LY)	% Change		
BANKRUPTCIES FILED²			CY - LY		
Chapter 7	224	363	-38.29%		
Chapter 11	2	1	100%		
Chapter 12	0	0	0%		
Chapter 13	43	29	48.28%		
<u>TOTAL FILINGS</u>	269	393	-31.55%		
BANKRUPTCIES PENDING⁽¹⁾⁽²⁾					
Chapter 7	501	648	-22.69%		
Chapter 11	26	27	-3.7%		
Chapter 12	0	3	-300%		
Chapter 13	771	829	-7%		
<u>TOTAL PENDING</u>	1,298	1,507	-13.87%		
ADVERSARY PROCEEDINGS					
Filed	7	12	-41.67%		
<u>TOTAL PENDING¹</u>	51	83	-38.55%		
AVERAGES					
Chapter 7 Average Disposition ³ in Days	140	125	12%		
Chapter 13 Average Disposition ³ in Days	1217	1027	18.5%		
Chapter 13 Average Days to Confirmation	164	204	-19.61%		

1 Pending totals are generated from CM/ECF on a time frame ending on the last day of the month.

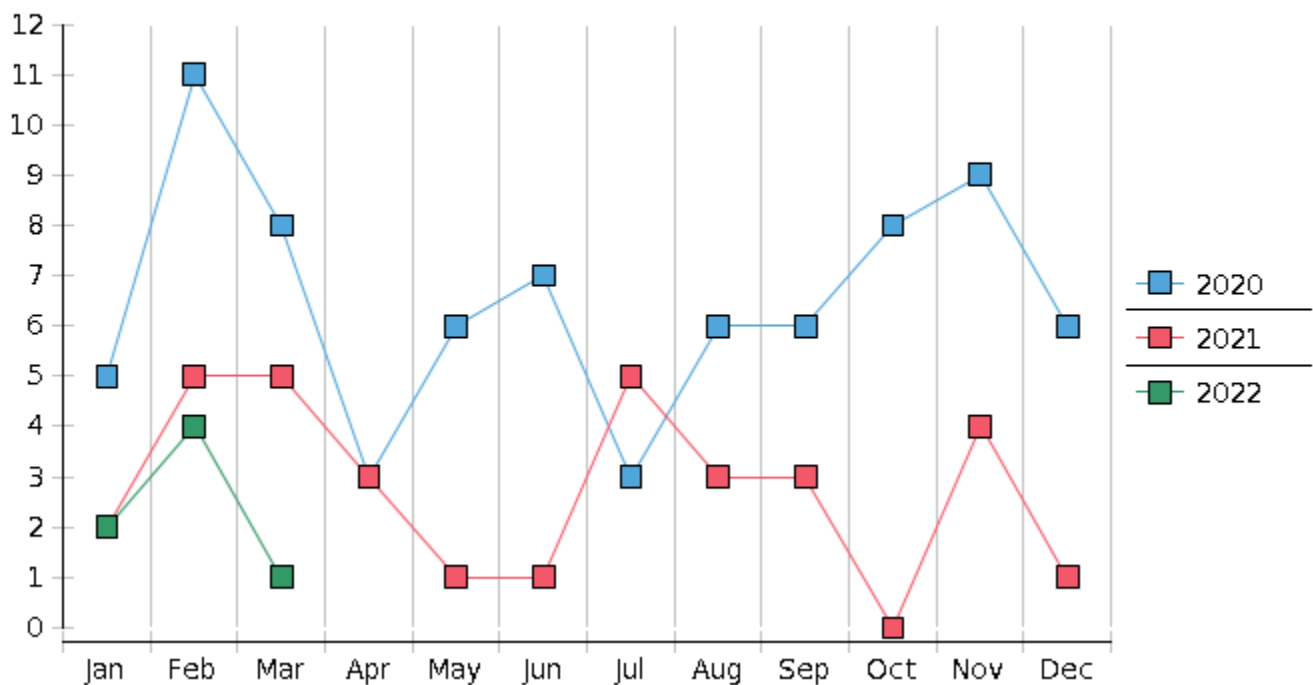
2 Chapter breakdowns are pulled from the Dynamic CM/ECF Database and may change over time due to conversions or other case changes.

3. Average disposition represents number of days from filing to discharge/dismissal of case.

Monthly Bankruptcy Filings



Monthly Adversary Filings



United States Bankruptcy Court - District of New Mexico
 Pro Se Filings

	Jan	Feb	Mar	Apr	May	Jun	Jul	Aug	Sep	Oct	Nov	Dec	YTD Total
2021	113	129	151	170	129	134	115	102	93	89	95	81	1,401
pro se 7	11	14	10	12	10	18	6	8	8	3	5	5	110
pro se 13	2	2	0	3	1	0	2	1	3	1	3	1	19
pro se with BPP	5	10	4	6	5	9	2	2	2	1	4	3	53
% Of Bankruptcies Filed	11.5%	12.4%	6.62%	8.82%	8.53%	13.43%	6.96%	8.82%	11.83%	4.49%	8.42%	7.41%	9.21%
2022	96	71	102										269
pro se 7	8	1	2										11
pro se 13	2	1	0										3
pro se with BPP	5	1	0										6
% Of Bankruptcies Filed	10.42%	2.82%	1.96%										5.2%
	Jan	Feb	Mar	Apr	May	Jun	Jul	Aug	Sep	Oct	Nov	Dec	YTD Total