

United States Bankruptcy Court
District of New Mexico

April 1, 2025
CM/ECF Real Time Statistics
March 2025 Report

Capsule View	Mar 2025	Feb 2025	Mar 2024	% Change	
	this month	last month	this month last year	from last month	from this month last year
Bankruptcies Filed					
Chapter 7	130	117	117	11.11%	11.11%
Chapter 11	0	1	0	-100%	0%
Chapter 12	0	0	0	0%	0%
Chapter 13	15	12	19	25%	-21.05%
TOTAL BANKRUPTCY FILINGS	145	130	136	11.54%	6.62%
Adversaries					
Adversaries Filed	2	4	3	-50%	-33.33%
YEAR-TO-DATE	2025(CY)	2024(LY)	% Change		
BANKRUPTCIES FILED ²				CY - LY	
Chapter 7	346	295	17.29%		
Chapter 11	2	2	0%		
Chapter 12	0	0	0%		
Chapter 13	44	39	12.82%		
<u>TOTAL FILINGS</u>	392	336	16.67%		
BANKRUPTCIES PENDING ⁽¹⁾⁽²⁾					
Chapter 7	469	468	0.21%		
Chapter 11	16	19	-15.79%		
Chapter 12	1	0	100%		
Chapter 13	544	594	-8.42%		
<u>TOTAL PENDING</u>	1,030	1,081	-4.72%		
ADVERSARY PROCEEDINGS					
Filed	10	10	0%		
<u>TOTAL PENDING¹</u>	31	41	-24.39%		
AVERAGES					
Chapter 7 Average Disposition ³ in Days	127	130	-2.31%		
Chapter 13 Average Disposition ³ in Days	1115	1142	-2.36%		
Chapter 13 Average Days to Confirmation	175	173	1.16%		

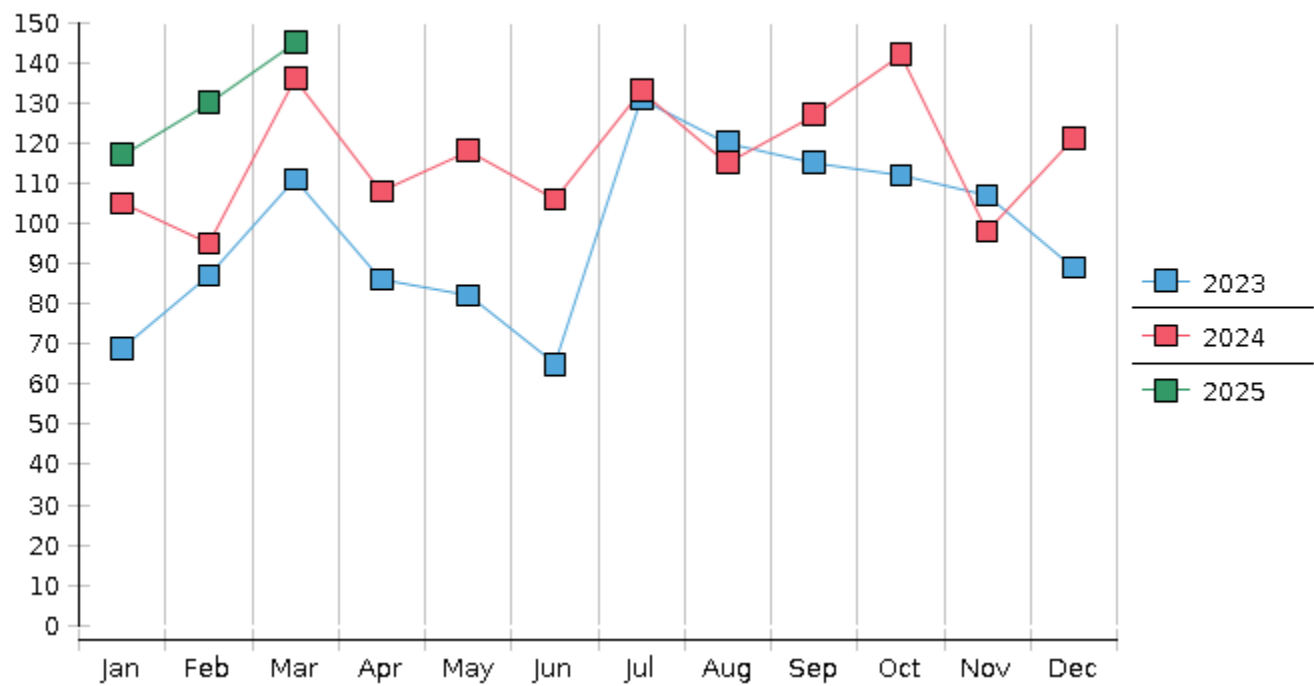
1 Pending totals are generated from CM/ECF on a time frame ending on the last day of the month.

2 Chapter breakdowns are pulled from the Dynamic CM/ECF Database and may change over time due to conversions or other case changes.

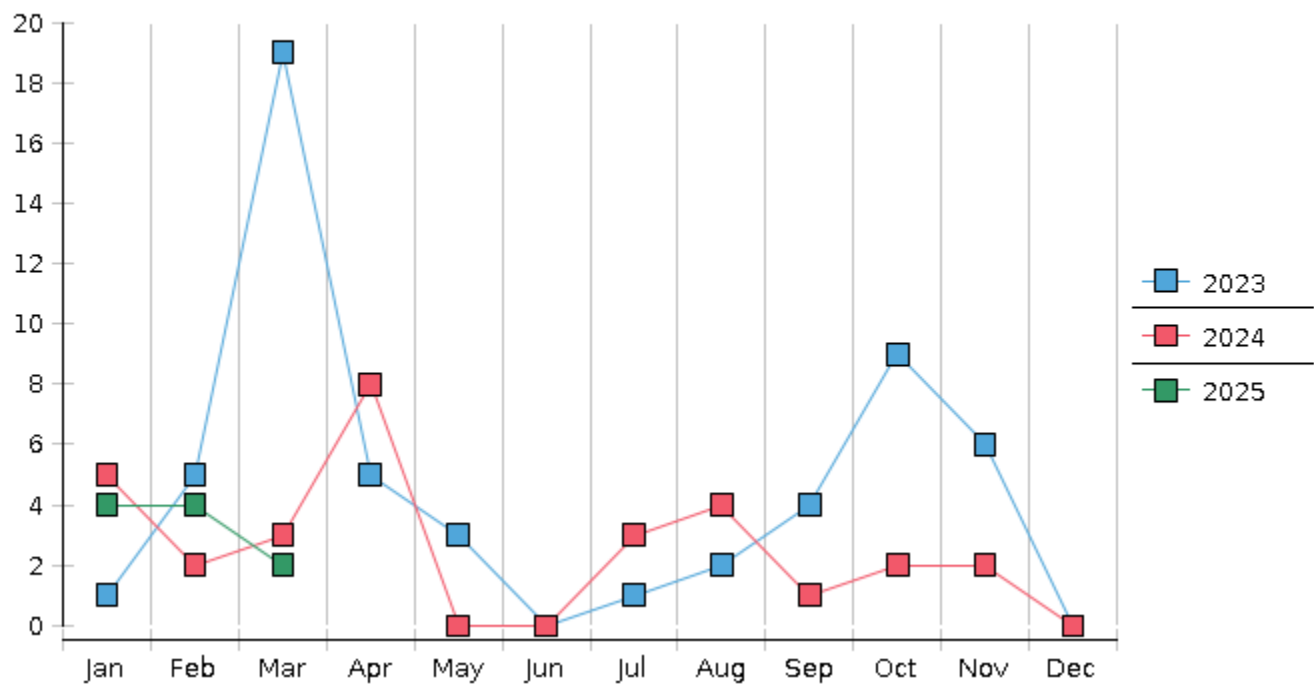
3. Average disposition represents number of days from filing to discharge/dismissal of case.

United States Bankruptcy Court - District of New Mexico
Statistics - Year-To-Date Totals[illegible]

Monthly Bankruptcy Filings



Monthly Adversary Filings



United States Bankruptcy Court - District of New Mexico
Pro Se Filings

	Jan	Feb	Mar	Apr	May	Jun	Jul	Aug	Sep	Oct	Nov	Dec	YTD Total
2024	105	95	136	108	118	106	133	115	127	142	98	121	1,404
pro se 7	5	7	6	2	7	9	5	8	6	7	7	6	75
pro se 13	4	0	0	1	1	0	5	2	4	2	1	2	22
pro se with BPP	1	2	0	1	2	1	2	1	1	2	0	0	13
% Of Bankruptcies Filed	9.52%	7.37%	4.41%	2.78%	7.63%	8.49%	7.52%	8.7%	7.87%	6.34%	8.16%	6.61%	6.91%
2025	117	130	145										392
pro se 7	8	6	5										19
pro se 13	1	3	3										7
pro se with BPP	1	2	2										5
% Of Bankruptcies Filed	7.69%	6.92%	5.52%										6.63%
	Jan	Feb	Mar	Apr	May	Jun	Jul	Aug	Sep	Oct	Nov	Dec	YTD Total