

United States Bankruptcy Court

District of New Mexico

June 1, 2022

CM/ECF Real Time Statistics

May 2022 Report

Capsule View	May 2022	Apr 2022	May 2021	% Change	
	this month	last month	this month last year	from last month	from this month last year
<b>Bankruptcies Filed</b>					
Chapter 7	90	76	123	18.42%	-26.83%
Chapter 11	0	0	0	0%	0%
Chapter 12	0	0	0	0%	0%
Chapter 13	9	17	6	-47.06%	50%
<b>TOTAL BANKRUPTCY FILINGS</b>	99	93	129	6.45%	-23.26%
<b>Adversaries</b>					
Adversaries Filed	3	2	1	50%	200%
<b>YEAR-TO-DATE</b>					
	<b>2022(CY)</b>	<b>2021(LY)</b>	<b>% Change</b>		
<b>BANKRUPTCIES FILED<sup>2</sup></b>			<b>CY - LY</b>		
Chapter 7	390	635	-38.58%		
Chapter 11	2	1	100%		
Chapter 12	0	1	-100%		
Chapter 13	69	55	25.45%		
<b>TOTAL FILINGS</b>	461	692	-33.38%		
<b>BANKRUPTCIES PENDING<sup>(1)(2)</sup></b>					
Chapter 7	515	725	-28.97%		
Chapter 11	22	26	-15.38%		
Chapter 12	0	2	-200%		
Chapter 13	755	811	-6.91%		
<b>TOTAL PENDING</b>	1,292	1,564	-17.39%		
<b>ADVERSARY PROCEEDINGS</b>					
Filed	12	16	-25%		
<b>TOTAL PENDING<sup>1</sup></b>	48	71	-32.39%		
<b>AVERAGES</b>					
Chapter 7 Average Disposition <sup>3</sup> in Days	141	132	6.82%		
Chapter 13 Average Disposition <sup>3</sup> in Days	1245	1133	9.89%		
Chapter 13 Average Days to Confirmation	180	206	-12.62%		

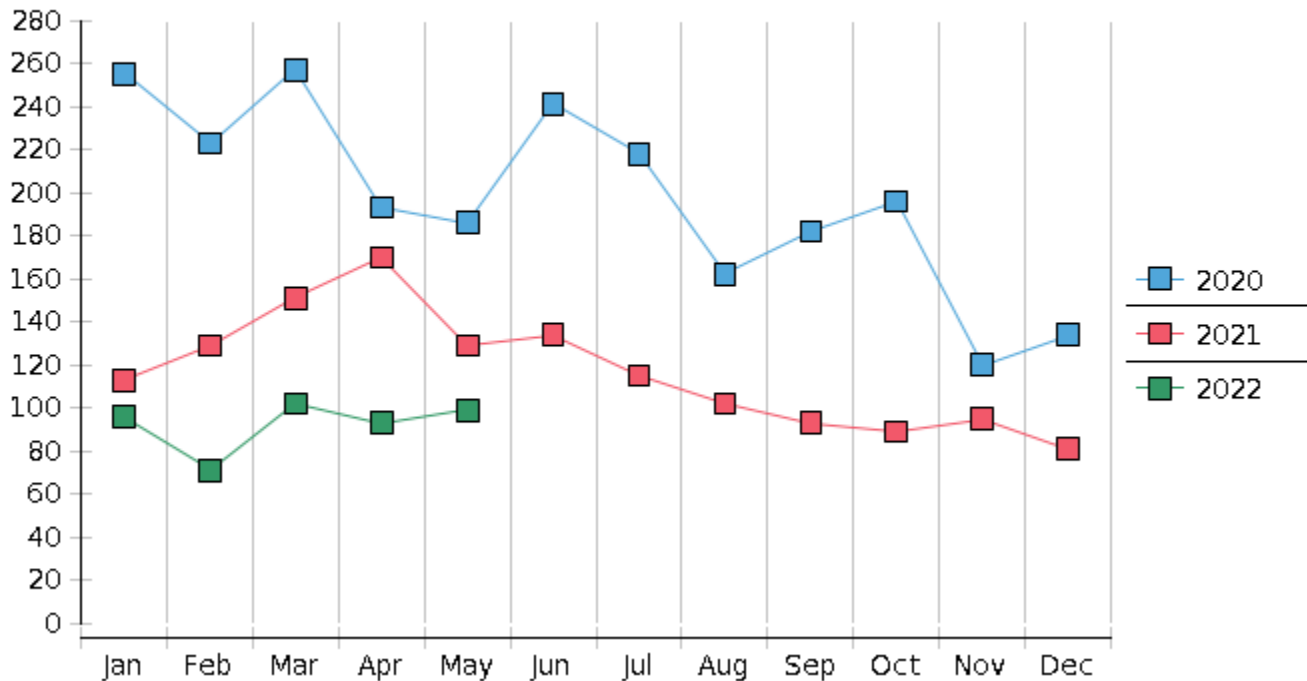
1 Pending totals are generated from CM/ECF on a time frame ending on the last day of the month.

2 Chapter breakdowns are pulled from the Dynamic CM/ECF Database and may change over time due to conversions or other case changes.

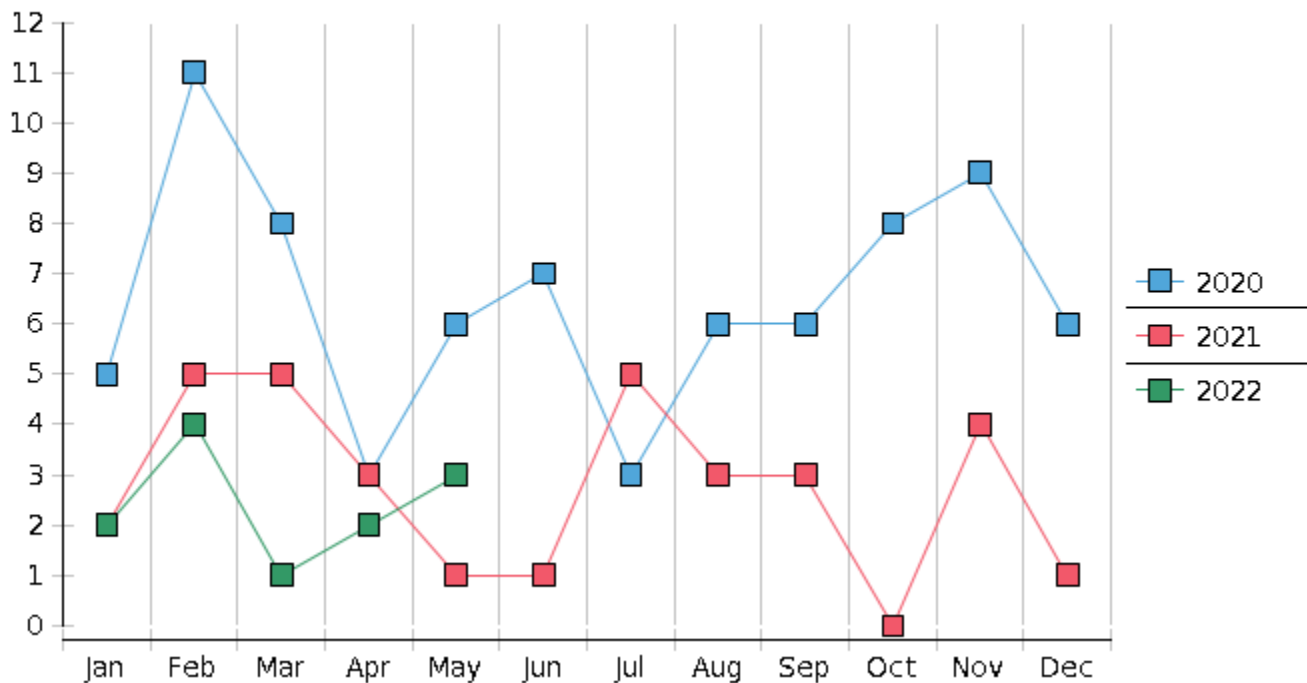
3. Average disposition represents number of days from filing to discharge/dismissal of case.



## Monthly Bankruptcy Filings



## Monthly Adversary Filings



United States Bankruptcy Court - District of New Mexico  
Pro Se Filings

	Jan	Feb	Mar	Apr	May	Jun	Jul	Aug	Sep	Oct	Nov	Dec	YTD Total
2021	113	129	151	170	129	134	115	102	93	89	95	81	1,401
pro se 7	11	14	10	12	10	18	6	8	8	3	5	5	110
pro se 13	2	2	0	3	1	0	2	1	3	1	3	1	19
pro se with BPP	5	10	4	6	5	9	2	2	2	1	4	3	53
% Of Bankruptcies Filed	11.5%	12.4%	6.62%	8.82%	8.53%	13.43%	6.96%	8.82%	11.83%	4.49%	8.42%	7.41%	9.21%
2022	96	71	102	93	99								461
pro se 7	8	1	2	6	5								22
pro se 13	2	1	0	2	3								8
pro se with BPP	5	1	0	0	2								8
% Of Bankruptcies Filed	10.42%	2.82%	1.96%	8.6%	8.08%								6.51%
	Jan	Feb	Mar	Apr	May	Jun	Jul	Aug	Sep	Oct	Nov	Dec	YTD Total