

United States Bankruptcy Court

District of New Mexico

December 1, 2022

CM/ECF Real Time Statistics

November 2022 Report

Capsule View	Nov 2022	Oct 2022	Nov 2021	% Change	
	this month	last month	this month last year	from last month	from this month last year
Bankruptcies Filed					
Chapter 7	57	73	77	-21.92%	-25.97%
Chapter 11	0	0	1	0%	-100%
Chapter 12	0	0	0	0%	0%
Chapter 13	16	9	17	77.78%	-5.88%
TOTAL BANKRUPTCY FILINGS	73	82	95	-10.98%	-23.16%
Adversaries					
Adversaries Filed	2	4	4	-50%	-50%
YEAR-TO-DATE					
	2022(CY)	2021(LY)	% Change		
BANKRUPTCIES FILED²			CY - LY		
Chapter 7	811	1,183	-31.45%		
Chapter 11	3	5	-40%		
Chapter 12	0	1	-100%		
Chapter 13	147	131	12.21%		
<u>TOTAL FILINGS</u>	961	1,320	-27.2%		
BANKRUPTCIES PENDING⁽¹⁾⁽²⁾					
Chapter 7	451	560	-19.46%		
Chapter 11	24	25	-4%		
Chapter 12	1	0	100%		
Chapter 13	706	766	-7.83%		
<u>TOTAL PENDING</u>	1,182	1,351	-12.51%		
ADVERSARY PROCEEDINGS					
Filed	25	32	-21.87%		
<u>TOTAL PENDING¹</u>	42	48	-12.5%		
AVERAGES					
Chapter 7 Average Disposition ³ in Days	140	126	11.11%		
Chapter 13 Average Disposition ³ in Days	1241	1172	5.89%		
Chapter 13 Average Days to Confirmation	172	192	-10.42%		

1 Pending totals are generated from CM/ECF on a time frame ending on the last day of the month.

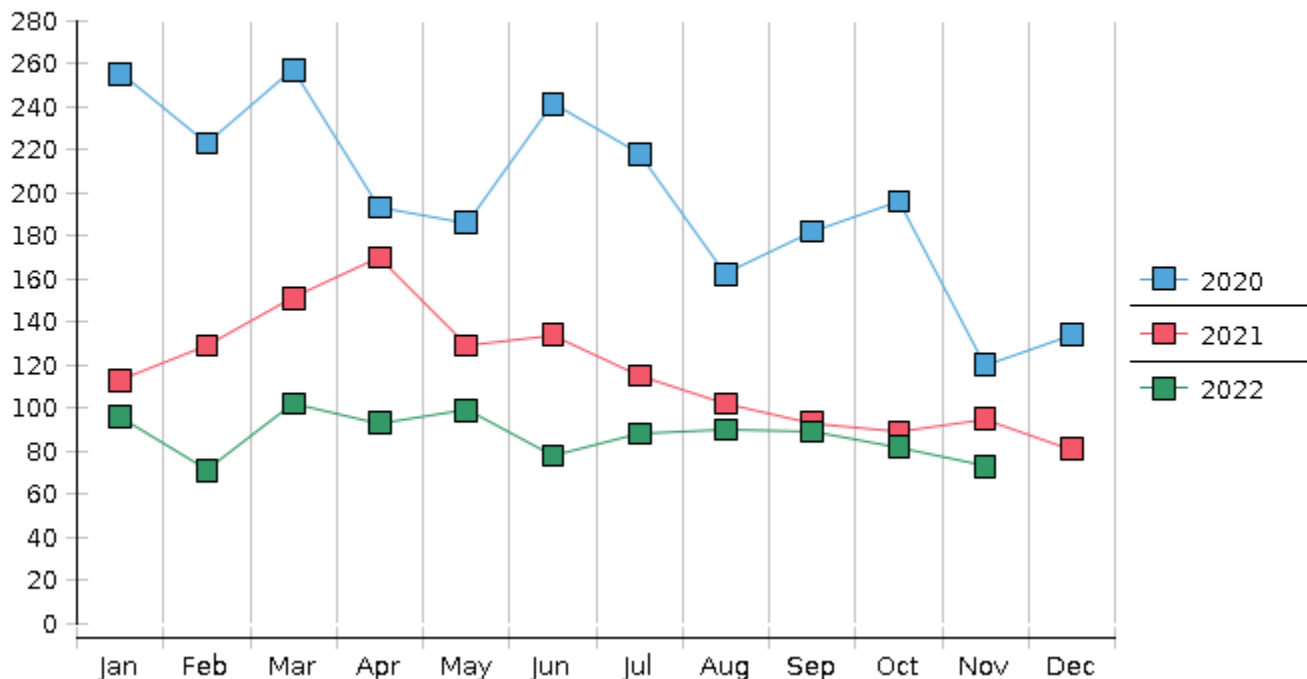
2 Chapter breakdowns are pulled from the Dynamic CM/ECF Database and may change over time due to conversions or other case changes.

3. Average disposition represents number of days from filing to discharge/dismissal of case.

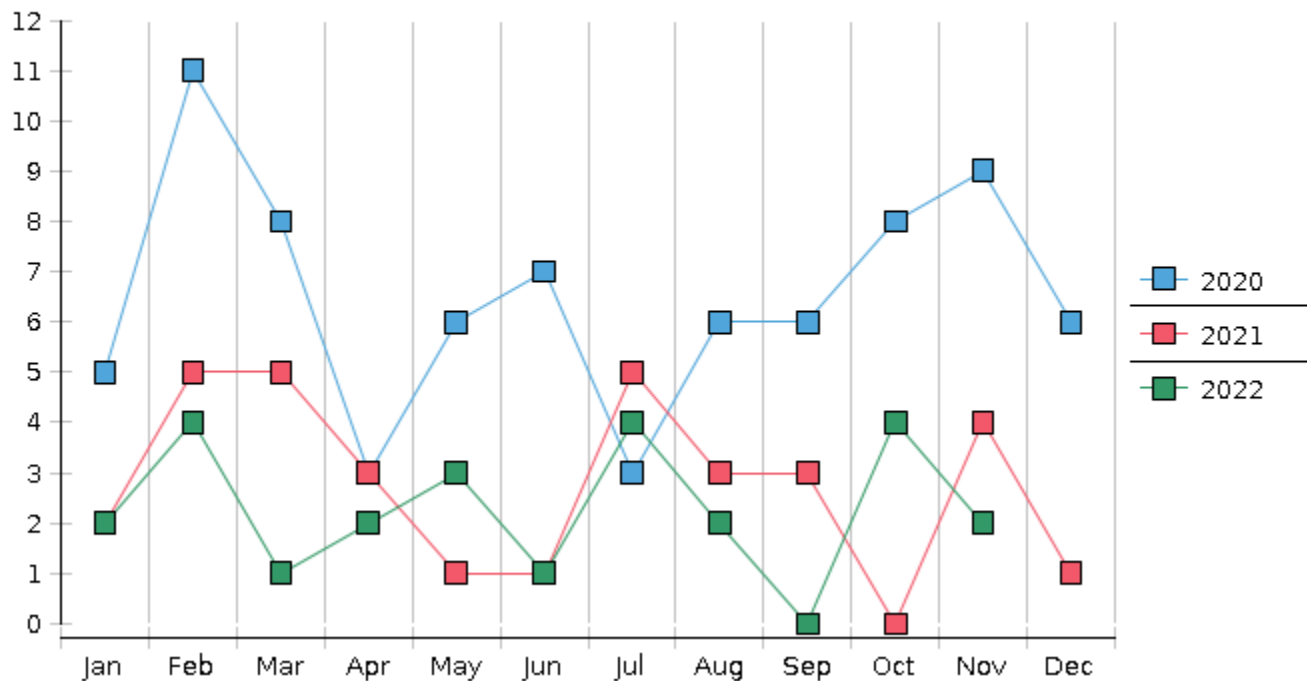
United States Bankruptcy Court - District of New Mexico
 Statistics - Year-To-Date Totals

2022	January	February	March	April	May	June	July	August	September	October	November	December	Total YTD
FILED													FILED
Chapter 7 Combined	81	57	86	76	90	62	77	77	75	73	57		811
Chapter 11	1	0	1	0	0	0	1	0	0	0	0		3
Chapter 12	0	0	0	0	0	0	0	0	0	0	0		0
Chapter 13	14	14	15	17	9	16	10	13	14	9	16		147
Total Filed for Month	96	71	102	93	99	78	88	90	89	82	73		
Totals Filed Year-to-Date	96	167	269	362	461	539	627	717	806	888	961		961
CLOSED													CLOSED
Chapter 7 Combined Total	95	87	71	53	116	87	60	107	112	111	45		944
Asset	3	3	5	3	8	4	4	5	3	3	6		47
No Asset	92	84	66	50	108	83	56	102	109	108	39		897
Chapter 11	1	2	1	4	1	0	0	1	0	0	0		10
Chapter 12	0	0	0	0	0	0	0	0	0	0	0		0
Chapter 13	18	23	23	19	16	14	23	17	17	14	19		203
Totals Closed for Month	114	112	95	76	133	101	83	125	129	125	64		
Totals Closed Year-to-Date	114	226	321	397	530	631	714	839	968	1093	1157		1157
Closing Breakdown													
Closed by Case Managers	32	35	41	39	41	39	33	53	38	27	33		411
Closed Automatically	82	77	54	37	92	62	50	72	91	98	31		746
Percent Closed by Case Managers	28.07%	31.25%	43.16%	51.32%	30.83%	38.61%	39.76%	42.4%	29.46%	21.6%	51.56%		35.52%
Percent Closed Automatically	71.93%	68.75%	56.84%	48.68%	69.17%	61.39%	60.24%	57.6%	70.54%	78.4%	48.44%		64.48%
PENDING													
Chapter 7	539	514	531	559	538	516	532	505	476	438	451		
Chapter 11	28	26	26	23	22	22	24	24	24	24	24		
Chapter 12	0	0	0	0	0	1	1	1	1	1	1		
Chapter 13	758	749	742	740	733	734	722	717	714	709	706		
Total Pending for Month	1325	1289	1299	1322	1293	1273	1279	1247	1215	1172	1182		
Adversary Proceedings													AP
Filed	2	4	1	2	3	1	4	2	0	4	2		25
Closed	2	1	0	5	3	8	5	2	3	0	1		30
Total Adversaries Pending	46	50	51	48	48	41	40	40	37	41	42		

Monthly Bankruptcy Filings



Monthly Adversary Filings



United States Bankruptcy Court - District of New Mexico
Pro Se Filings

	Jan	Feb	Mar	Apr	May	Jun	Jul	Aug	Sep	Oct	Nov	Dec	YTD Total
2021	113	129	151	170	129	134	115	102	93	89	95	81	1,401
pro se 7	11	14	10	12	10	18	6	8	8	3	5	5	110
pro se 13	2	2	0	3	1	0	2	1	3	1	3	1	19
pro se with BPP	5	10	4	6	5	9	2	2	2	1	4	3	53
% Of Bankruptcies Filed	11.5%	12.4%	6.62%	8.82%	8.53%	13.43%	6.96%	8.82%	11.83%	4.49%	8.42%	7.41%	9.21%
2022	96	71	102	93	99	78	88	90	89	82	73		961
pro se 7	8	1	2	6	5	3	5	8	3	5	3		49
pro se 13	2	1	0	2	3	4	2	1	0	0	3		18
pro se with BPP	5	1	0	0	2	0	3	2	1	2	0		16
% Of Bankruptcies Filed	10.42%	2.82%	1.96%	8.6%	8.08%	8.97%	7.95%	10%	3.37%	6.1%	8.22%		6.97%
	Jan	Feb	Mar	Apr	May	Jun	Jul	Aug	Sep	Oct	Nov	Dec	YTD Total