

United States Bankruptcy Court
District of New Mexico

December 1, 2023
CM/ECF Real Time Statistics
November 2023 Report

Capsule View	Nov 2023	Oct 2023	Nov 2022	% Change	
	this month	last month	this month last year	from last month	from this month last year
Bankruptcies Filed					
Chapter 7	99	95	57	4.21%	73.68%
Chapter 11	0	3	0	-300%	0%
Chapter 12	0	0	0	0%	0%
Chapter 13	8	14	16	-42.86%	-50%
TOTAL BANKRUPTCY FILINGS	107	112	73	-4.46%	46.58%
Adversaries					
Adversaries Filed	6	9	2	-33.33%	200%
YEAR-TO-DATE	2023(CY)	2022(LY)	% Change		
BANKRUPTCIES FILED²			CY - LY		
Chapter 7	907	811	11.84%		
Chapter 11	7	3	133.33%		
Chapter 12	0	0	0%		
Chapter 13	171	147	16.33%		
<u>TOTAL FILINGS</u>	1,085	961	12.9%		
BANKRUPTCIES PENDING⁽¹⁾⁽²⁾					
Chapter 7	487	476	2.31%		
Chapter 11	22	23	-4.35%		
Chapter 12	0	1	-100%		
Chapter 13	626	682	-8.21%		
<u>TOTAL PENDING</u>	1,135	1,182	-3.98%		
ADVERSARY PROCEEDINGS					
Filed	55	25	120%		
<u>TOTAL PENDING¹</u>	44	42	4.76%		
AVERAGES					
Chapter 7 Average Disposition ³ in Days	153	140	9.29%		
Chapter 13 Average Disposition ³ in Days	1212	1238	-2.1%		
Chapter 13 Average Days to Confirmation	152	174	-12.64%		

1 Pending totals are generated from CM/ECF on a time frame ending on the last day of the month.

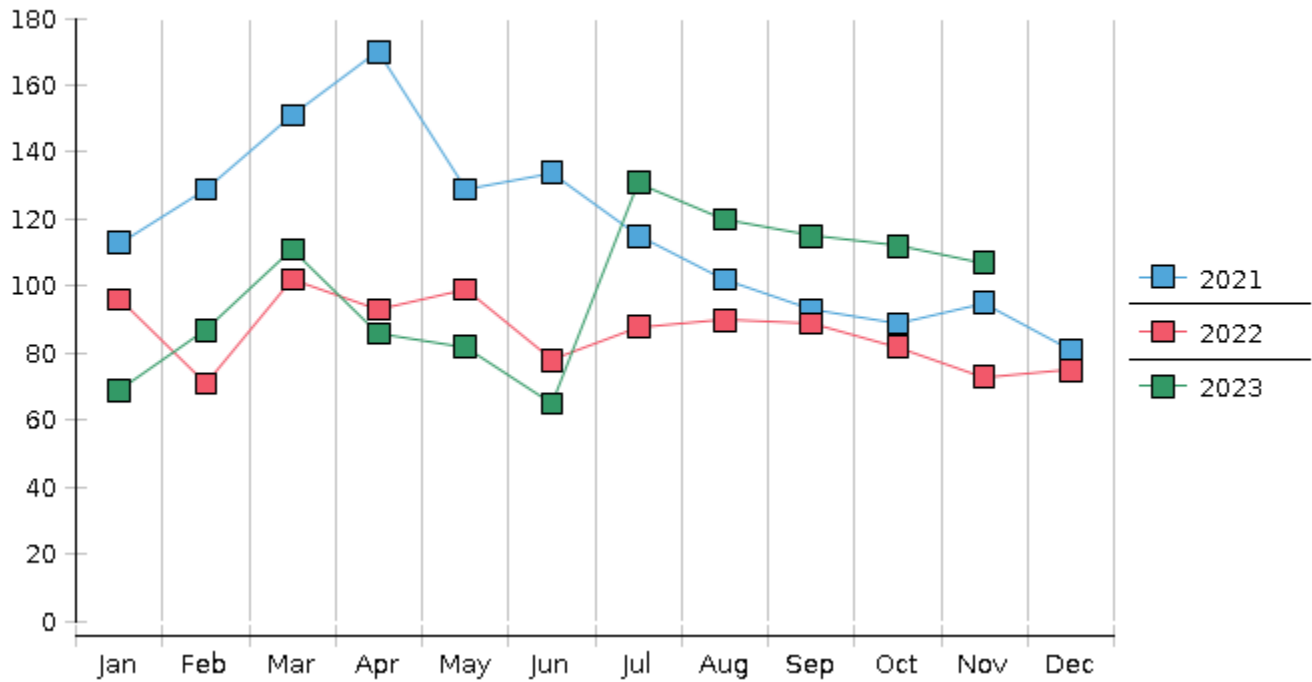
2 Chapter breakdowns are pulled from the Dynamic CM/ECF Database and may change over time due to conversions or other case changes.

3. Average disposition represents number of days from filing to discharge/dismissal of case.

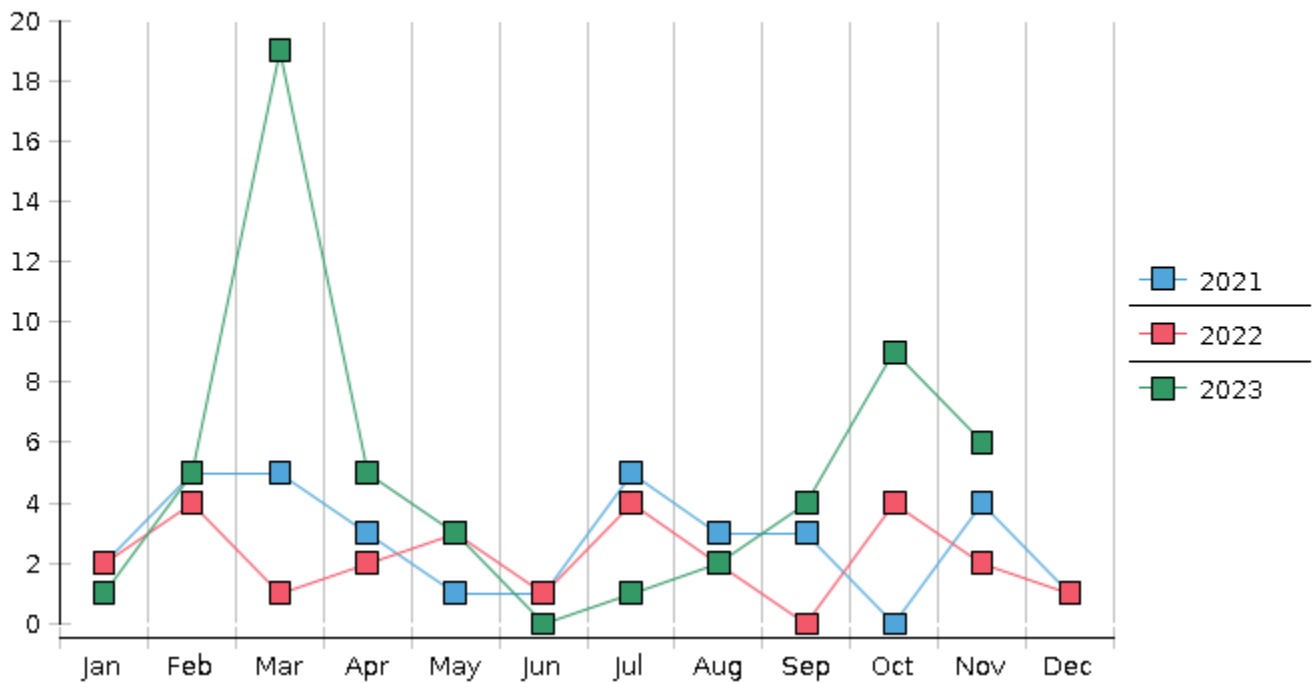
United States Bankruptcy Court - District of New Mexico
 Statistics - Year-To-Date Totals

2023	January	February	March	April	May	June	July	August	September	October	November	December	Total YTD
FILED													FILED
Chapter 7 Combined	55	70	91	68	65	51	115	100	98	95	99		907
Chapter 11	0	0	0	0	1	1	1	1	0	3	0		7
Chapter 12	0	0	0	0	0	0	0	0	0	0	0		0
Chapter 13	14	17	20	18	16	13	15	19	17	14	8		171
Total Filed for Month	69	87	111	86	82	65	131	120	115	112	107		
Totals Filed Year-to-Date	69	156	267	353	435	500	631	751	866	978	1085		1085
CLOSED													CLOSED
Chapter 7 Combined Total	98	60	67	59	93	85	104	62	63	107	94		892
Asset	4	3	6	5	3	3	3	2	2	7	13		51
No Asset	94	57	61	54	90	82	101	60	61	100	81		841
Chapter 11	3	1	1	2	1	0	0	0	1	0	0		9
Chapter 12	0	0	0	0	0	0	0	0	0	0	0		0
Chapter 13	22	23	23	12	30	21	7	25	21	18	17		219
Totals Closed for Month	123	84	91	73	124	106	111	87	85	125	111		
Totals Closed Year-to-Date	123	207	298	371	495	601	712	799	884	1009	1120		1120
Closing Breakdown													
Closed by Case Managers	41	42	51	26	52	40	17	41	31	37	40		418
Closed Automatically	82	42	40	47	72	66	94	46	54	88	71		702
Percent Closed by Case Managers	33.33%	50.0%	56.04%	35.62%	41.94%	37.74%	15.32%	47.13%	36.47%	29.6%	36.04%		37.32%
Percent Closed Automatically	66.67%	50.0%	43.96%	64.38%	58.06%	62.26%	84.68%	52.87%	63.53%	70.4%	63.96%		62.68%
PENDING													
Chapter 7	413	423	449	459	432	399	412	456	491	480	487		
Chapter 11	20	19	18	16	16	17	18	19	18	21	22		
Chapter 12	0	0	0	0	0	0	0	0	0	0	0		
Chapter 13	667	661	659	664	650	642	650	642	639	635	626		
Total Pending for Month	1100	1103	1126	1139	1098	1058	1080	1117	1148	1136	1135		
Adversary Proceedings													AP
Filed	1	5	19	5	3	0	1	2	4	9	6		55
Closed	1	1	10	11	5	3	1	7	0	8	4		51
Total Adversaries Pending	39	43	52	46	45	42	42	37	41	42	44		

Monthly Bankruptcy Filings



Monthly Adversary Filings



United States Bankruptcy Court - District of New Mexico
 Pro Se Filings

	Jan	Feb	Mar	Apr	May	Jun	Jul	Aug	Sep	Oct	Nov	Dec	YTD Total
2022	96	71	102	93	99	78	88	90	89	82	73	75	1,036
pro se 7	8	1	2	6	5	3	5	8	3	5	3	10	59
pro se 13	2	1	0	2	3	4	2	1	0	0	3	2	20
pro se with BPP	5	1	0	0	2	0	3	3	1	2	0	1	18
% Of Bankruptcies Filed	10.42%	2.82%	1.96%	8.6%	8.08%	8.97%	7.95%	10%	3.37%	6.1%	8.22%	16%	7.63%
2023	69	87	111	86	82	65	131	120	115	112	107		1,085
pro se 7	6	5	3	5	7	2	6	6	10	6	6		62
pro se 13	0	1	4	2	2	1	0	2	2	2	2		18
pro se with BPP	1	1	0	2	2	0	2	0	2	2	0		12
% Of Bankruptcies Filed	8.7%	6.9%	6.31%	8.14%	10.98%	4.62%	4.58%	6.67%	10.43%	7.14%	7.48%		7.37%
	Jan	Feb	Mar	Apr	May	Jun	Jul	Aug	Sep	Oct	Nov	Dec	YTD Total