

United States Bankruptcy Court

District of New Mexico

November 1, 2022

CM/ECF Real Time Statistics

October 2022 Report

Capsule View	Oct 2022	Sep 2022	Oct 2021	% Change	
	this month	last month	this month last year	from last month	from this month last year
Bankruptcies Filed					
Chapter 7	73	75	77	-2.67%	-5.19%
Chapter 11	0	0	1	0%	-100%
Chapter 12	0	0	0	0%	0%
Chapter 13	9	14	11	-35.71%	-18.18%
TOTAL BANKRUPTCY FILINGS	82	89	89	-7.87%	-7.87%
Adversaries					
Adversaries Filed	4	0	0	400%	400%
YEAR-TO-DATE					
	2022(CY)		2021(LY)	% Change	
BANKRUPTCIES FILED²				CY - LY	
Chapter 7	754		1,106	-31.83%	
Chapter 11	3		4	-25%	
Chapter 12	0		1	-100%	
Chapter 13	131		114	14.91%	
TOTAL FILINGS	888		1,225	-27.51%	
BANKRUPTCIES PENDING⁽¹⁾⁽²⁾					
Chapter 7	434		589	-26.32%	
Chapter 11	24		24	0%	
Chapter 12	1		1	0%	
Chapter 13	713		772	-7.64%	
TOTAL PENDING	1,172		1,386	-15.44%	
ADVERSARY PROCEEDINGS					
Filed	23		28	-17.86%	
TOTAL PENDING¹	41		52	-21.15%	
AVERAGES					
Chapter 7 Average Disposition ³ in Days	140		127	10.24%	
Chapter 13 Average Disposition ³ in Days	1207		1174	2.81%	
Chapter 13 Average Days to Confirmation	170		194	-12.37%	

1 Pending totals are generated from CM/ECF on a time frame ending on the last day of the month.

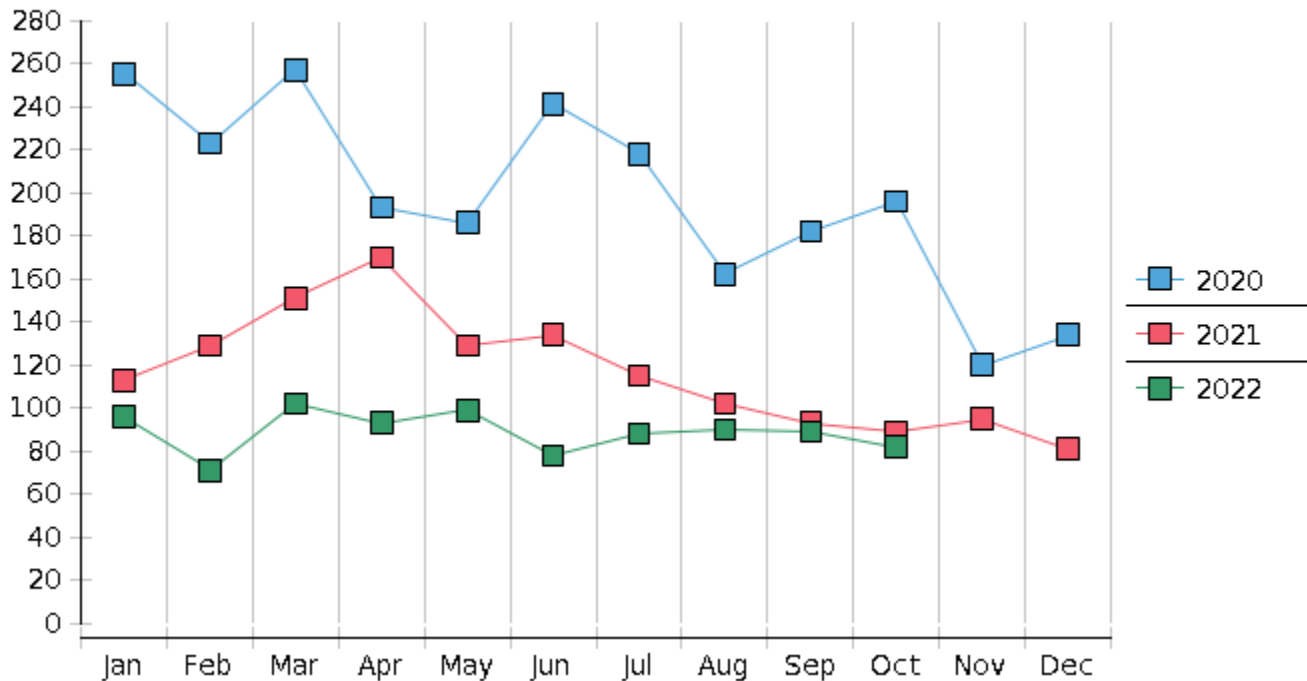
2 Chapter breakdowns are pulled from the Dynamic CM/ECF Database and may change over time due to conversions or other case changes.

3. Average disposition represents number of days from filing to discharge/dismissal of case.

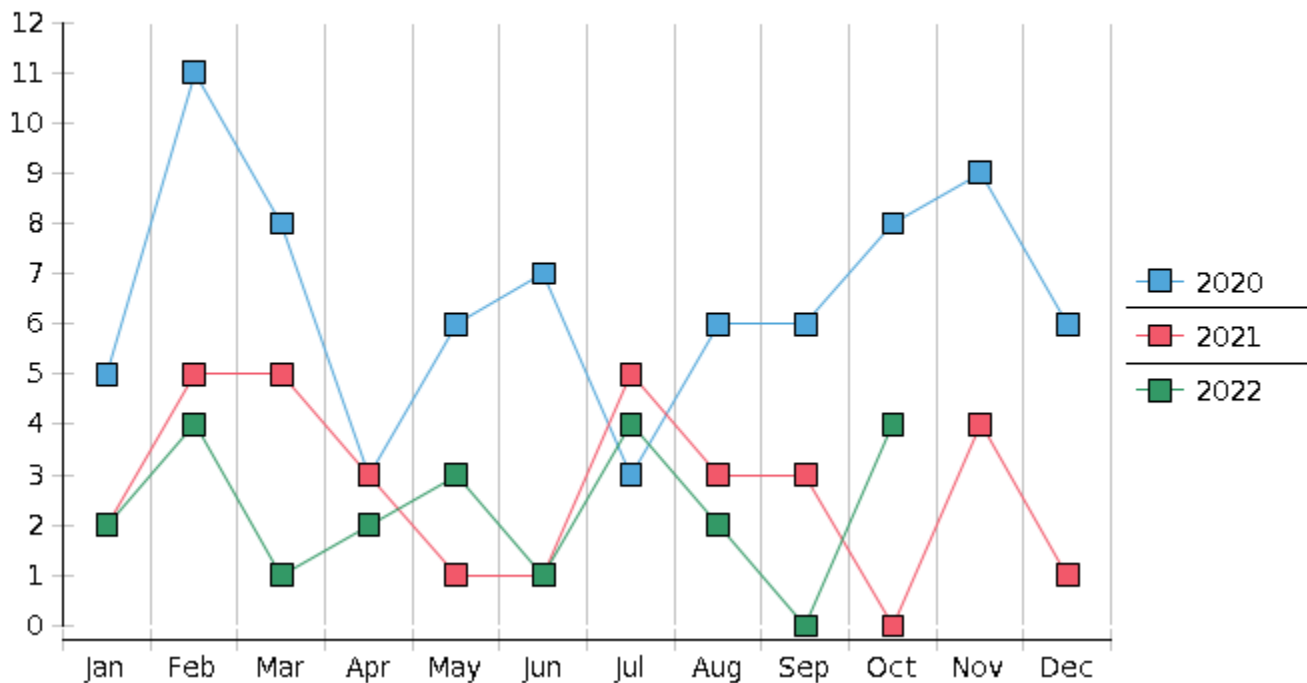
United States Bankruptcy Court - District of New Mexico
 Statistics - Year-To-Date Totals

2022	January	February	March	April	May	June	July	August	September	October	November	December	Total YTD
FILED													FILED
Chapter 7 Combined	81	57	86	76	90	62	77	77	75	73			754
Chapter 11	1	0	1	0	0	0	1	0	0	0			3
Chapter 12	0	0	0	0	0	0	0	0	0	0			0
Chapter 13	14	14	15	17	9	16	10	13	14	9			131
Total Filed for Month	96	71	102	93	99	78	88	90	89	82			
Totals Filed Year-to-Date	96	167	269	362	461	539	627	717	806	888			888
CLOSED													CLOSED
Chapter 7 Combined Total	95	87	71	53	116	87	60	107	112	111			899
Asset	3	3	5	3	8	4	4	5	3	3			41
No Asset	92	84	66	50	108	83	56	102	109	108			858
Chapter 11	1	2	1	4	1	0	0	1	0	0			10
Chapter 12	0	0	0	0	0	0	0	0	0	0			0
Chapter 13	18	23	23	19	16	14	23	17	17	14			184
Totals Closed for Month	114	112	95	76	133	101	83	125	129	125			
Totals Closed Year-to-Date	114	226	321	397	530	631	714	839	968	1093			1093
Closing Breakdown													
Closed by Case Managers	32	35	41	39	41	39	33	53	38	27			378
Closed Automatically	82	77	54	37	92	62	50	72	91	98			715
Percent Closed by Case Managers	28.07%	31.25%	43.16%	51.32%	30.83%	38.61%	39.76%	42.4%	29.46%	21.6%			34.58%
Percent Closed Automatically	71.93%	68.75%	56.84%	48.68%	69.17%	61.39%	60.24%	57.6%	70.54%	78.4%			65.42%
PENDING													
Chapter 7	535	510	527	555	534	512	528	501	472	434			
Chapter 11	28	26	26	23	22	22	24	24	24	24			
Chapter 12	0	0	0	0	0	1	1	1	1	1			
Chapter 13	762	753	746	744	737	738	726	721	718	713			
Total Pending for Month	1325	1289	1299	1322	1293	1273	1279	1247	1215	1172			
Adversary Proceedings													AP
Filed	2	4	1	2	3	1	4	2	0	4			23
Closed	2	1	0	5	3	8	5	2	3	0			29
Total Adversaries Pending	46	50	51	48	48	41	40	40	37	41			

Monthly Bankruptcy Filings



Monthly Adversary Filings



United States Bankruptcy Court - District of New Mexico
Pro Se Filings

	Jan	Feb	Mar	Apr	May	Jun	Jul	Aug	Sep	Oct	Nov	Dec	YTD Total
2021	113	129	151	170	129	134	115	102	93	89	95	81	1,401
pro se 7	11	14	10	12	10	18	6	8	8	3	5	5	110
pro se 13	2	2	0	3	1	0	2	1	3	1	3	1	19
pro se with BPP	5	10	4	6	5	9	2	2	2	1	4	3	53
% Of Bankruptcies Filed	11.5%	12.4%	6.62%	8.82%	8.53%	13.43%	6.96%	8.82%	11.83%	4.49%	8.42%	7.41%	9.21%
2022	96	71	102	93	99	78	88	90	89	82			888
pro se 7	8	1	2	6	5	3	5	8	3	5			46
pro se 13	2	1	0	2	3	4	2	1	0	0			15
pro se with BPP	5	1	0	0	2	0	3	2	1	2			16
% Of Bankruptcies Filed	10.42%	2.82%	1.96%	8.6%	8.08%	8.97%	7.95%	10%	3.37%	6.1%			6.87%
	Jan	Feb	Mar	Apr	May	Jun	Jul	Aug	Sep	Oct	Nov	Dec	YTD Total