

United States Bankruptcy Court  
District of New Mexico

November 1, 2023  
CM/ECF Real Time Statistics  
**October 2023 Report**

Capsule View	Oct 2023	Sep 2023	Oct 2022	% Change	
	this month	last month	this month last year	from last month	from this month last year
<b>Bankruptcies Filed</b>					
Chapter 7	95	98	73	-3.06%	30.14%
Chapter 11	3	0	0	300%	300%
Chapter 12	0	0	0	0%	0%
Chapter 13	14	17	9	-17.65%	55.56%
<b>TOTAL BANKRUPTCY FILINGS</b>	112	115	82	-2.61%	36.59%
<b>Adversaries</b>					
Adversaries Filed	9	4	4	125%	125%
<b>YEAR-TO-DATE</b>					
	<b>2023(CY)</b>		<b>2022(LY)</b>	<b>% Change</b>	
<b>BANKRUPTCIES FILED<sup>2</sup></b>				<b>CY - LY</b>	
Chapter 7	808		754	7.16%	
Chapter 11	7		3	133.33%	
Chapter 12	0		0	0%	
Chapter 13	163		131	24.43%	
<b><u>TOTAL FILINGS</u></b>	978		888	10.14%	
<b>BANKRUPTCIES PENDING<sup>(1)(2)</sup></b>					
Chapter 7	479		462	3.68%	
Chapter 11	21		23	-8.7%	
Chapter 12	0		1	-100%	
Chapter 13	636		686	-7.29%	
<b><u>TOTAL PENDING</u></b>	1,136		1,172	-3.07%	
<b>ADVERSARY PROCEEDINGS</b>					
Filed	49		23	113.04%	
<b><u>TOTAL PENDING<sup>1</sup></u></b>	42		41	2.44%	
<b>AVERAGES</b>					
Chapter 7 Average Disposition <sup>3</sup> in Days	154		140	10%	
Chapter 13 Average Disposition <sup>3</sup> in Days	1203		1209	-0.5%	
Chapter 13 Average Days to Confirmation	150		173	-13.29%	

1 Pending totals are generated from CM/ECF on a time frame ending on the last day of the month.

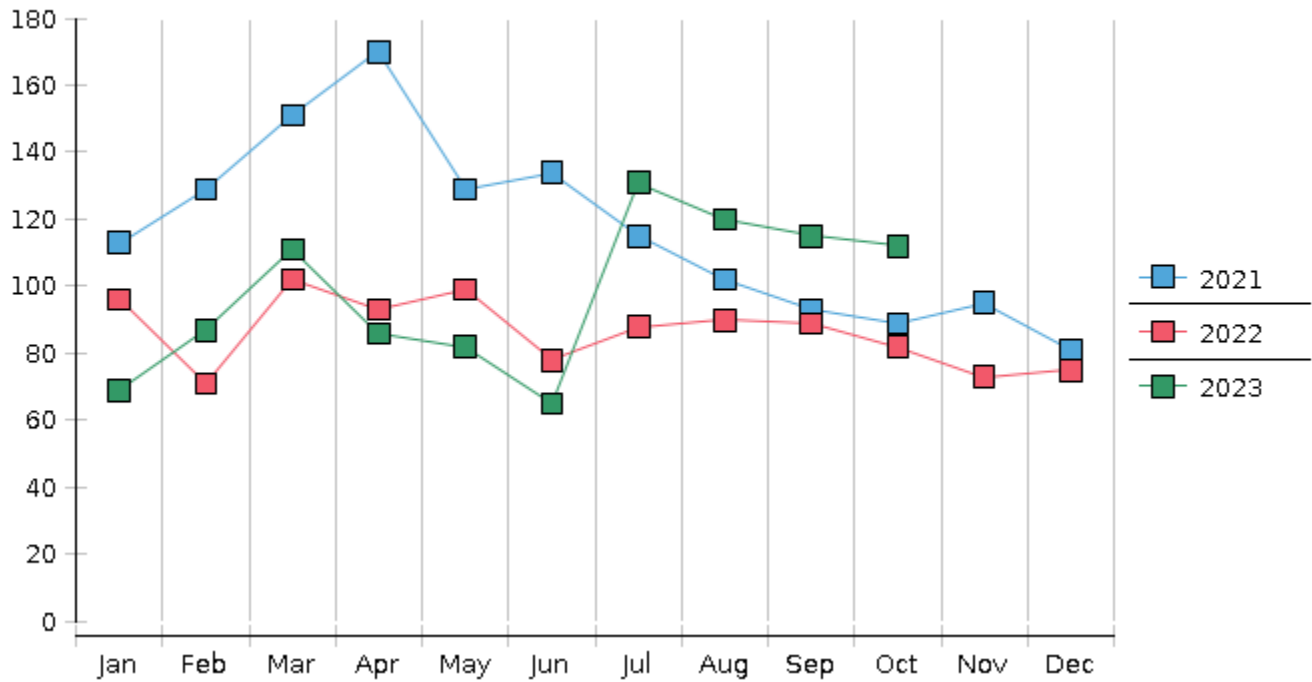
2 Chapter breakdowns are pulled from the Dynamic CM/ECF Database and may change over time due to conversions or other case changes.

3. Average disposition represents number of days from filing to discharge/dismissal of case.

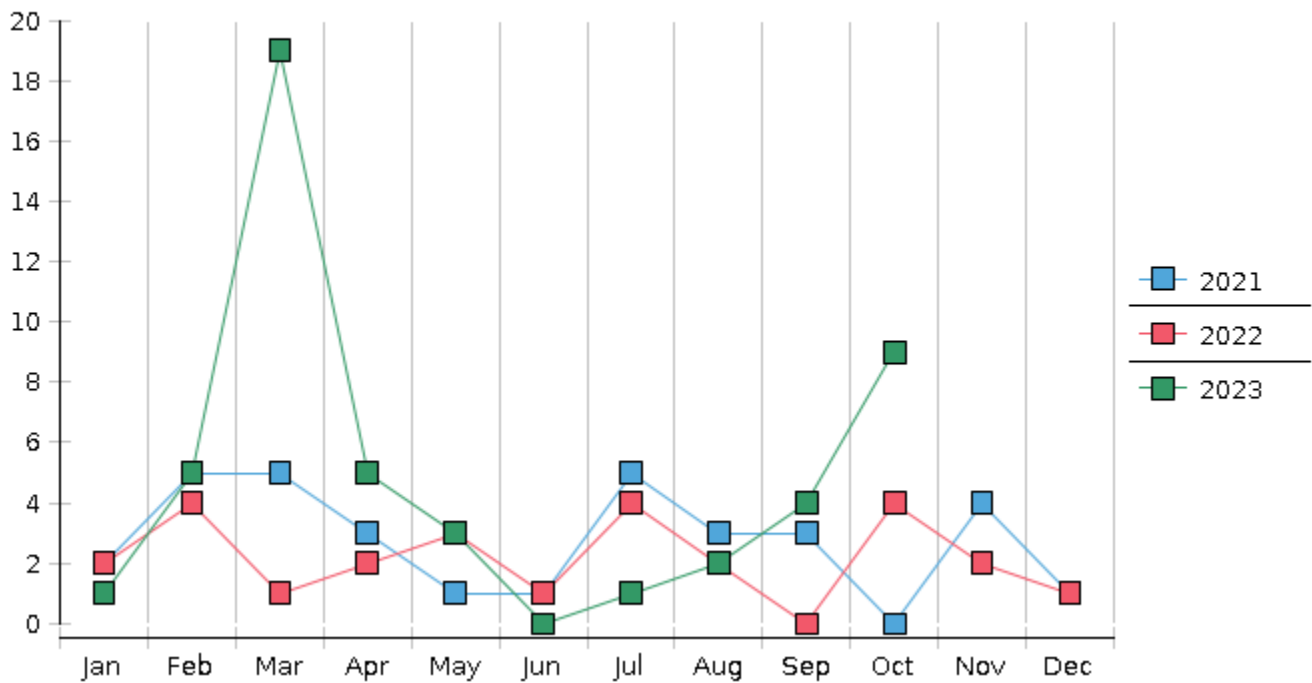
United States Bankruptcy Court - District of New Mexico  
 Statistics - Year-To-Date Totals

<b>2023</b>	January	February	March	April	May	June	July	August	September	October	November	December	<b>Total YTD</b>
<b>FILED</b>													<b>FILED</b>
Chapter 7 Combined	55	70	91	68	65	51	115	100	98	95			<b>808</b>
Chapter 11	0	0	0	0	1	1	1	1	0	3			<b>7</b>
Chapter 12	0	0	0	0	0	0	0	0	0	0			<b>0</b>
Chapter 13	14	17	20	18	16	13	15	19	17	14			<b>163</b>
Total Filed for Month	<b>69</b>	<b>87</b>	<b>111</b>	<b>86</b>	<b>82</b>	<b>65</b>	<b>131</b>	<b>120</b>	<b>115</b>	<b>112</b>			
Totals Filed Year-to-Date	<b>69</b>	<b>156</b>	<b>267</b>	<b>353</b>	<b>435</b>	<b>500</b>	<b>631</b>	<b>751</b>	<b>866</b>	<b>978</b>			<b>978</b>
<b>CLOSED</b>													<b>CLOSED</b>
Chapter 7 Combined Total	98	60	67	59	93	85	104	62	63	107			<b>798</b>
Asset	4	3	6	5	3	3	3	2	2	7			<b>38</b>
No Asset	94	57	61	54	90	82	101	60	61	100			<b>760</b>
Chapter 11	3	1	1	2	1	0	0	0	1	0			<b>9</b>
Chapter 12	0	0	0	0	0	0	0	0	0	0			<b>0</b>
Chapter 13	22	23	23	12	30	21	7	25	21	18			<b>202</b>
Totals Closed for Month	<b>123</b>	<b>84</b>	<b>91</b>	<b>73</b>	<b>124</b>	<b>106</b>	<b>111</b>	<b>87</b>	<b>85</b>	<b>125</b>			
Totals Closed Year-to-Date	<b>123</b>	<b>207</b>	<b>298</b>	<b>371</b>	<b>495</b>	<b>601</b>	<b>712</b>	<b>799</b>	<b>884</b>	<b>1009</b>			<b>1009</b>
<b>Closing Breakdown</b>													
Closed by Case Managers	41	42	51	26	52	40	17	41	31	37			<b>378</b>
Closed Automatically	82	42	40	47	72	66	94	46	54	88			<b>631</b>
Percent Closed by Case Managers	<b>33.33%</b>	<b>50.0%</b>	<b>56.04%</b>	<b>35.62%</b>	<b>41.94%</b>	<b>37.74%</b>	<b>15.32%</b>	<b>47.13%</b>	<b>36.47%</b>	<b>29.6%</b>			<b>37.46%</b>
Percent Closed Automatically	<b>66.67%</b>	<b>50.0%</b>	<b>43.96%</b>	<b>64.38%</b>	<b>58.06%</b>	<b>62.26%</b>	<b>84.68%</b>	<b>52.87%</b>	<b>63.53%</b>	<b>70.4%</b>			<b>62.54%</b>
<b>PENDING</b>													
Chapter 7	413	423	449	459	432	399	411	455	490	479			
Chapter 11	20	19	18	16	16	17	18	19	18	21			
Chapter 12	0	0	0	0	0	0	0	0	0	0			
Chapter 13	667	661	659	664	650	642	651	643	640	636			
Total Pending for Month	<b>1100</b>	<b>1103</b>	<b>1126</b>	<b>1139</b>	<b>1098</b>	<b>1058</b>	<b>1080</b>	<b>1117</b>	<b>1148</b>	<b>1136</b>			
<b>Adversary Proceedings</b>													<b>AP</b>
Filed	1	5	19	5	3	0	1	2	4	9			<b>49</b>
Closed	1	1	10	11	5	3	1	7	0	8			<b>47</b>
Total Adversaries Pending	<b>39</b>	<b>43</b>	<b>52</b>	<b>46</b>	<b>45</b>	<b>42</b>	<b>42</b>	<b>37</b>	<b>41</b>	<b>42</b>			

### Monthly Bankruptcy Filings



### Monthly Adversary Filings



United States Bankruptcy Court - District of New Mexico  
Pro Se Filings

	Jan	Feb	Mar	Apr	May	Jun	Jul	Aug	Sep	Oct	Nov	Dec	YTD Total
2022	96	71	102	93	99	78	88	90	89	82	73	75	1,036
pro se 7	8	1	2	6	5	3	5	8	3	5	3	10	59
pro se 13	2	1	0	2	3	4	2	1	0	0	3	2	20
pro se with BPP	5	1	0	0	2	0	3	3	1	2	0	1	18
% Of Bankruptcies Filed	10.42%	2.82%	1.96%	8.6%	8.08%	8.97%	7.95%	10%	3.37%	6.1%	8.22%	16%	7.63%
2023	69	87	111	86	82	65	131	120	115	112			978
pro se 7	6	5	3	5	7	2	6	6	10	6			56
pro se 13	0	1	4	2	2	1	0	2	2	2			16
pro se with BPP	1	1	0	2	2	0	2	0	2	2			12
% Of Bankruptcies Filed	8.7%	6.9%	6.31%	8.14%	10.98%	4.62%	4.58%	6.67%	10.43%	7.14%			7.36%
	Jan	Feb	Mar	Apr	May	Jun	Jul	Aug	Sep	Oct	Nov	Dec	YTD Total